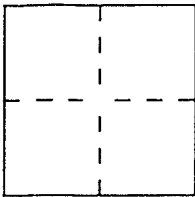


CORNER RECORD

Document Number A.P.N. 38-252-01

City of Corte Madera County of Marin, California

Brief Legal Description AP No 038-252-01



CORNER TYPE

Government Corner Control
Meander Property
Rancho Other
Date of Survey Jan 23, 05

COORDINATES
(Optional)

N. _____
E. _____
Zone _____ Datum _____
Elev. _____

Corner — Left as found Found and tagged Established Reestablished Rebuilt

Identification and type of corner found: Evidence used to identify or procedure used to establish or reestablish the corner:

Set iron pipes and a nail, RCE 30465 at corners of Lot 165, 11RM22

A description of the physical condition of the monument as found and as set or reset:

Found monuments on Privateer per 11RM22

SURVEYOR'S STATEMENT

This Corner Record was prepared by me or under my direction in conformance with the Land Surveyors' Act on Jan 25, 2005

Signed Jay L. Hallberg L.S. or R.C.E. Number 30465



COUNTY SURVEYOR'S STATEMENT

This Corner Record was received January 31, 2005 and examined and filed March 2, 2005

Signed Craig Tackabery Title County Surveyor



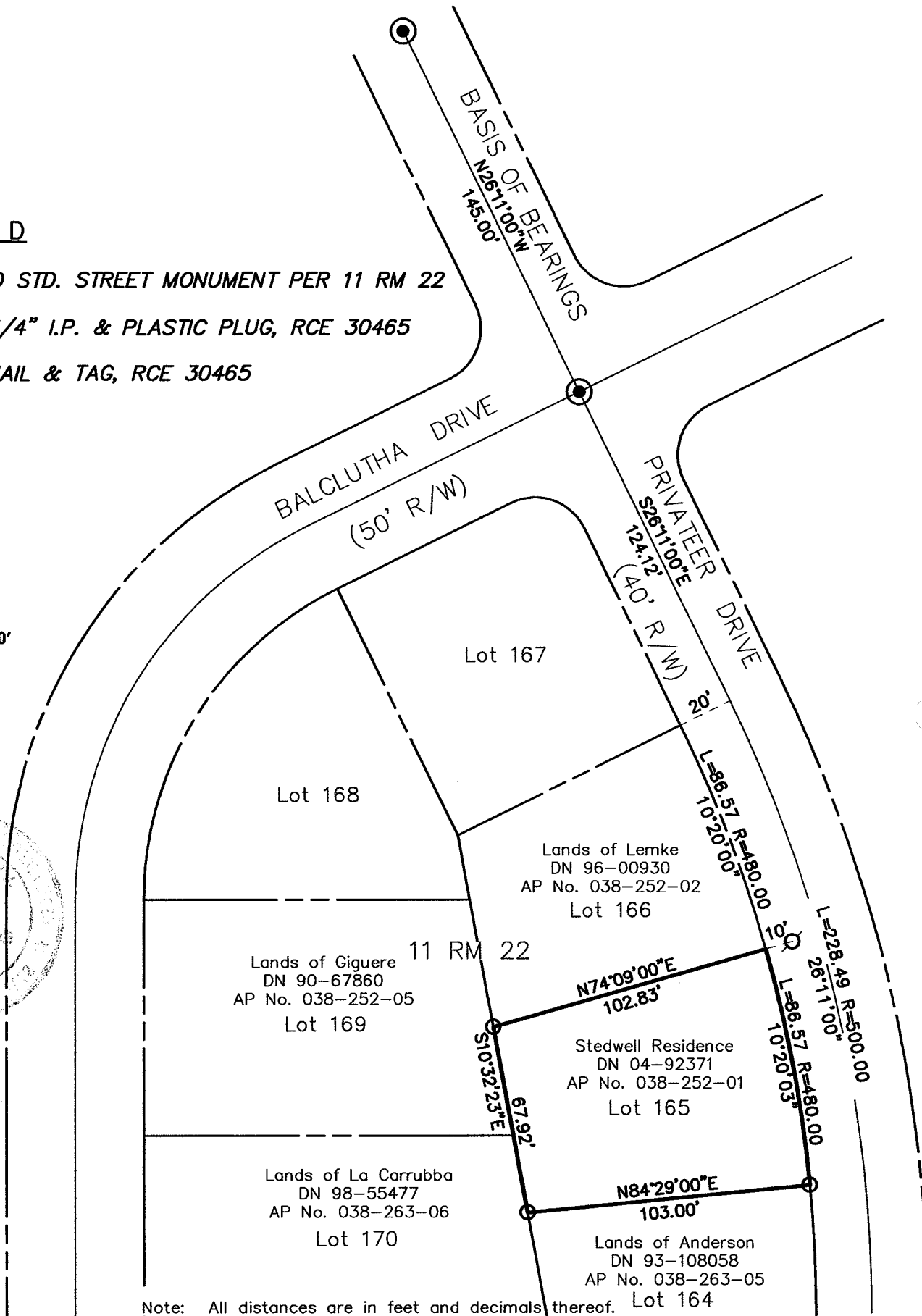
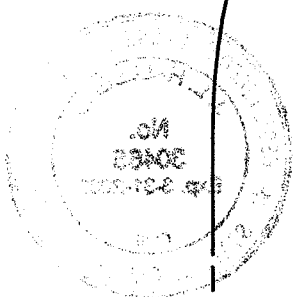
County Surveyor's Comment _____

LEGEND

- ⊙ FOUND STD. STREET MONUMENT PER 11 RM 22
- SET 3/4" I.P. & PLASTIC PLUG, RCE 30465
- ⊗ SET NAIL & TAG, RCE 30465



SCALE: 1" = 50'



Note: All distances are in feet and decimals thereof. Lot 164

SHEET	1	OF	1
SCALE:	1" = 50'	DESIGN:	MDH
DATE:	1/25/05	DRAWN:	MDH
FILE:	2004-219	CHECKED:	JLH

J.L. ENGINEERING
 CIVIL ENGINEERS-LAND SURVEYORS
 1539 4th ST., SAN RAFAEL, CA. 94901 (415) 457-6647

Corner Record
 Lands of Stedwell - 19 Privateer Drive
 APN 038-252-01, Corte Madera, Marin County, CA