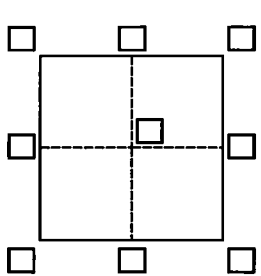


CORNER RECORD

Agency Index DPW# 21-054
 Document Number 038-240-10

City of Corte Madera County of Marin, California
 Brief Legal Description Lot 5, map of Verona Place, 21 RM 49, M.C.R., APN 038-240-10



CORNER TYPE

Government Corner Control
 Meander Property
 Rancho Other

Date of Survey March 16, 2021

COORDINATES (Optional)

N. _____ E. _____
 Elevation _____
 Units Metric U.S. Survey Foot
 Horizontal Datum _____
 Zone _____ Epoch Date _____
 Complies with Public Resources Code §§8801-8819
 Complies with Public Resources Code §§8890-8902

PLS Act Ref.: 8765(d) 8771 8773 Other:

Corner/Monument: Left as found Established Rebuilt Pre-Construction
 Found and tagged Reestablished Referenced Post-Construction

Narrative of corner identified and monument as found, set, reset, replaced, or removed:
 See sheet #2 for description(s):
 Found 3/4" iron pipes tagged RCE 12094 as shown on map of Verona Place, 21 Record Maps 49, Marin County Records, and used to reestablish the boundary of Lot 5.

SURVEYOR'S STATEMENT

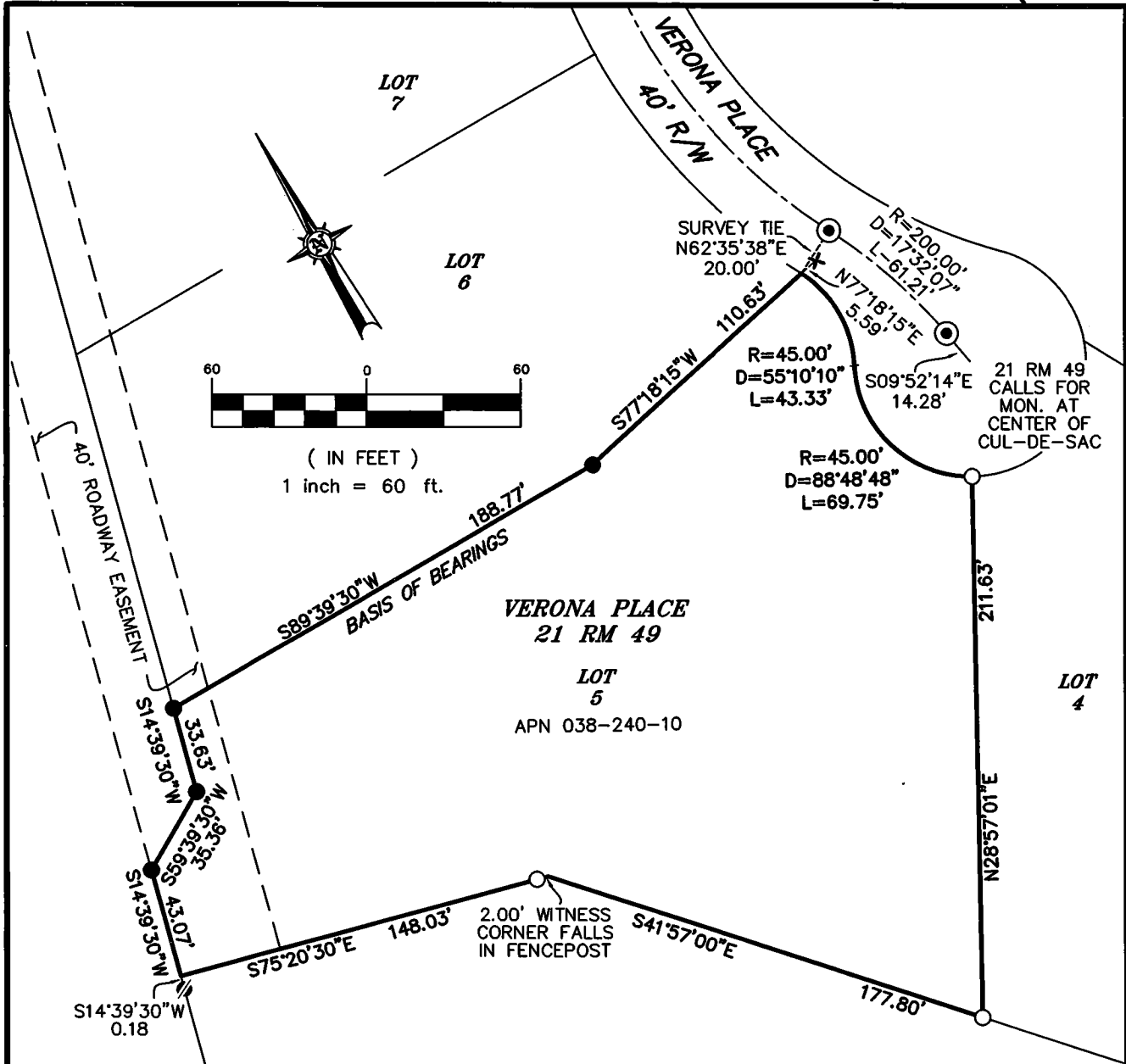
This Corner Record was prepared by me or under my direction in conformance with
 the Professional Land Surveyors' Act on March 17, 2021
 Signed Michael E. Ford P.L.S. or R.C.S. No. 7237



COUNTY SURVEYOR'S STATEMENT

This Corner Record was received MARCH 17, 2021
 and examined and filed MAY 19, 2021
 Signed T.W. Park P.L.S. ~~NO. 8176~~ No. 8176
 Title COUNTY SURVEYOR
 County Surveyor's Comment _____





BASIS OF BEARINGS

S89°39'30\"W BETWEEN FOUND 3/4\" IRON PIPES TAGGED RCE 12094 AS SHOWN ON MAP OF VERONA PLACE FILED IN BOOK 21 OF RECORD MAPS AT PAGE 49, MARIN COUNTY RECORDS.

LEGEND

- FOUND STREET MONUMENT WELL 2\" BRASS DISC WITH PUNCH, RCE 12094
- SET 1/2\" IRON PIPE, TAGGED LS7237
- FOUND 3/4\" IRON PIPE, TAGGED RCE 12094
- ⊘ FOUND 3/4\" IRON PIPE, TAGGED LS 3783
- ✱ FOUND SCRIBED X ON TOP OF CURB

NOTES:

ALL DISTANCES SHOWN ARE IN FEET AND DECIMALS THEREOF.
 ALL COURSES SHOWN HEREON ARE RECORD AND MEASURED PER MAP OF VERONA PLACE FILED IN BOOK 21 OF RECORD MAPS AT PAGE 49, MARIN COUNTY RECORDS.
 ALL SURVEY TIES ARE PERPENDICULAR UNLESS OTHERWISE NOTED.



2300 bethards drive, suite J
 santa rosa • california 95405
 p 707.542.8513 - f 707.542.1825
 www.michaelfordinc.com