

# CORNER RECORD

Document Number APN 038-232-19

City of CORTE MADERA County of Marin California.

Brief Legal Description: LOT 78 MARINER HIGHLANDS, R.M. BK 11- PG 22 MARIN CO RCDS.


### CORNER TYPE:

Government Corner  Control   
 Meander  Property   
 Rancho  Other   
 Date of Survey \_\_\_\_\_

### COORDINATES

[Optional]  
 N> \_\_\_\_\_  
 E> \_\_\_\_\_  
 Zone \_\_\_\_\_ Datum \_\_\_\_\_  
 Elev> \_\_\_\_\_

CORNER: ----- Left as found  Found & Tagged  Established  Reestablished  Rebuilt

Identification & Type of Corner Found: Evidence used to identify or procedure used to establish or reestablish the corner

FOUND STD WELL MONUMENTS PER SUBDIVISION MAP.

A description of the physical condition of the monument as found and as set or reset:

Original corners not found: Set points as shown on reverse.

### SURVEYOR'S STATEMENT

The corner record was prepared by me or under my direction in conformance with the Land Surveyors' Act on JAN 2003 2003

Signed: \_\_\_\_\_ LS or RCE # C 18200

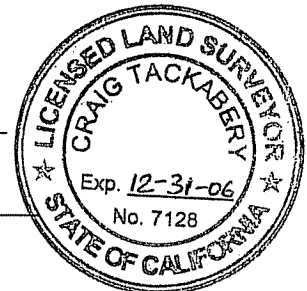


### COUNTY SURVEYORS STATEMENT

This corner record was received: FEB. 3, 2003

and filed FEBRUARY 4, 2003

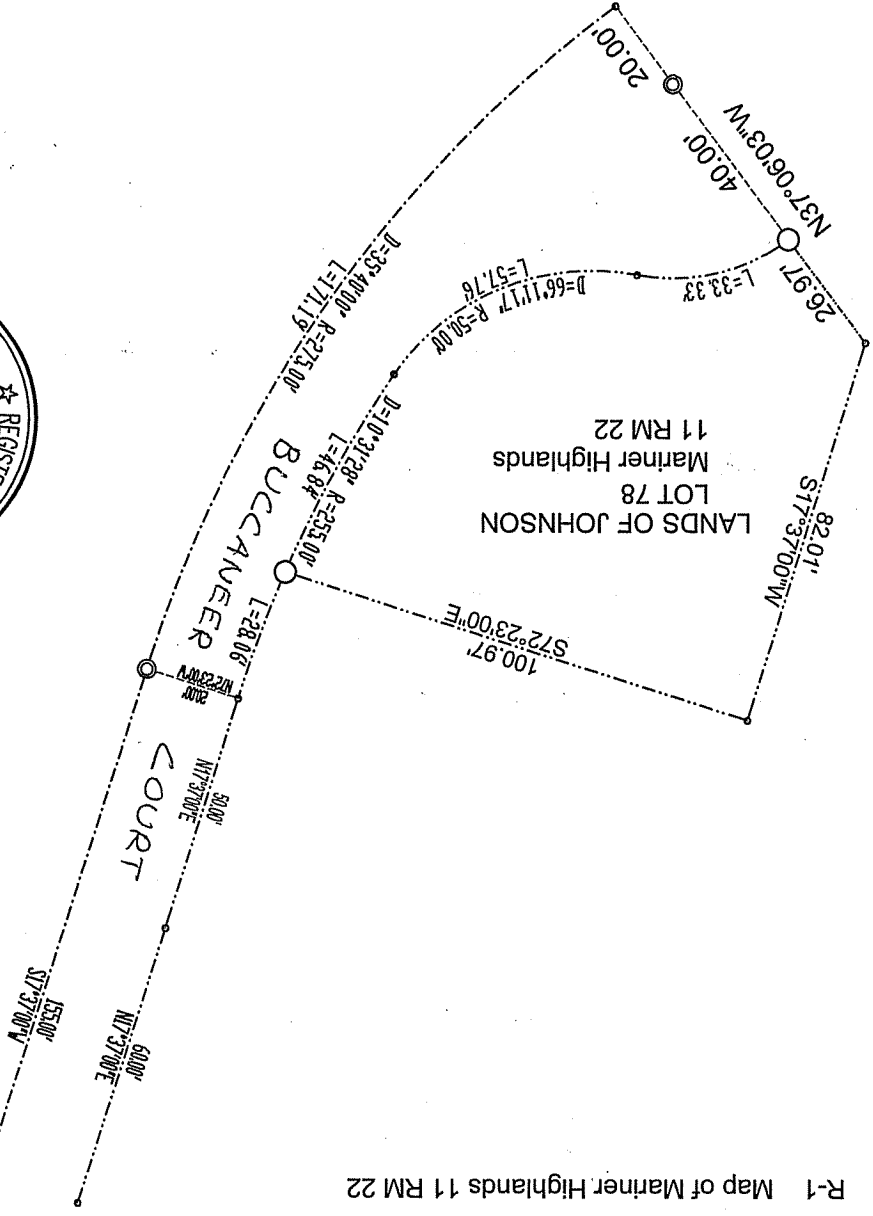
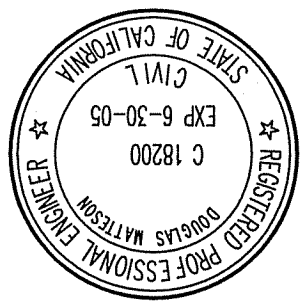
Signed [Signature] Title: DEPUTY



### COUNTY SURVEYOR'S COMMENT

\_\_\_\_\_  
 \_\_\_\_\_  
 \_\_\_\_\_

MATTESON ENGINEERING AND SURVEYING  
 SUITE 210A 200 GATE FIVE SAUSALITO, CA



R-1 Map of Mariner Highlands 11 RM 22

- LEGEND
- SET REBAR AND CAP PCE 18200 UNLESS NOTED OTHERWISE
  - FOUND STD WELL MON. [ per R-1 ]
  - SURVEY LINES
  - PROPERTY LINES