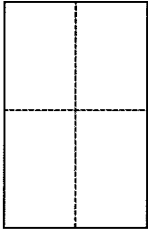


**CORNER RECORD**

Document Number APN 038-232-18

City of Corte Madera County of Marin, California

Brief Legal Description Lot 77, Record Map "Mariner Highlands", Unit One, filed in Book 11 of Maps, at page 22, M.C.R.



**CORNER TYPE**

Government Corner  Control   
Meaneder  Property   
Rancho  Other   
Date of Survey 10/16/2015

**COORDINATES (Optional)**

N. \_\_\_\_\_  
E. \_\_\_\_\_  
Zone \_\_\_\_\_ NAD27  NAD83   
NAD83 Epoch \_\_\_\_\_  
Elev. \_\_\_\_\_  
Vert. Datum: NGVD29  NAVD88   
Meas. Units: Metric  Imperial

Corner - Left as found  Found and tagged  Established  Reestablished  Rebuilt

Identification and type of corner found: Evidence used to identify or procedure used to establish or reestablish the corner:  
Found Centerline Street Monuments to be in record position, good condition, and used to set Property Corners for Lot 77.

A description of the physical condition of the monument as found and as set or reset: \_\_\_\_\_  
Found a Rebar/Cap (illegible) at the most southeasterly corner of Lot 77 Set (3) 1/2" iron pipes, tagged LS7237, at the corners of the most northerly and westerly parcel lines of Lot 77, (see attached exhibit).

**SURVEYOR'S STATEMENT**

This Corner Record was prepared by me or under my direction in conformance with the Land Surveyor's Act on October 20th, 2015  
Signed Michael E. Ford P.L.S. or R.C.E. No. 7237



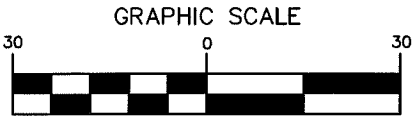
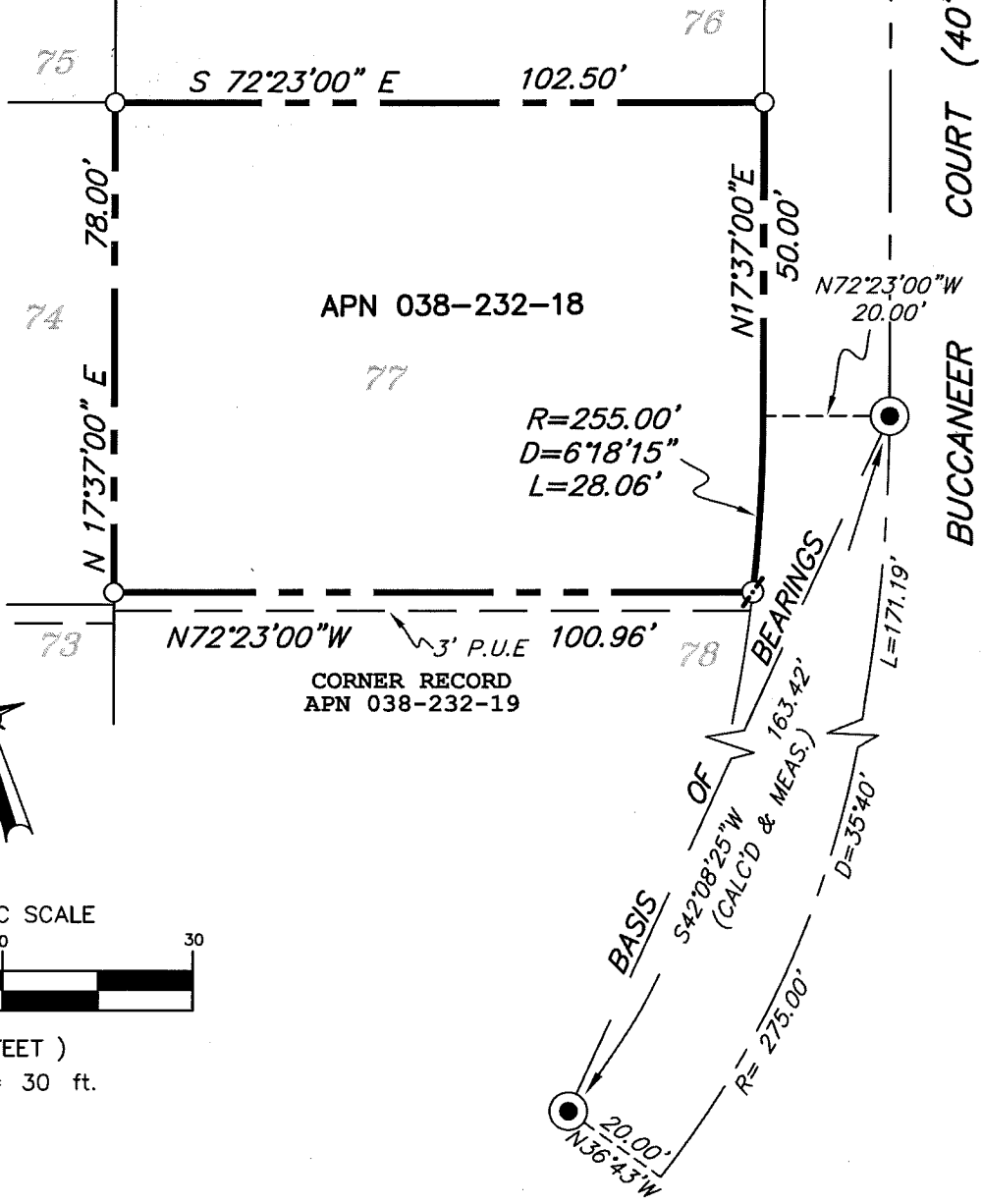
**COUNTY SURVEYOR'S STATEMENT**

This Corner Record was received October 26, 2015  
and examined and filed DECEMBER 23, 2015  
Signed [Signature] P.L.S. or R.C.E. No. 7821  
Title County Surveyor



County Surveyor's Comment

"MARINER HIGHLANDS"  
UNIT ONE  
11 MAPS 22



( IN FEET )  
1 inch = 30 ft.

**LEGEND**

- STANDARD STREET MONUMENT
- ⊗ FOUND REBAR & CAP (ILLEGIBLE)
- SET 1/2" IRON PIPE, TAGGED LS7237
- P.U.E. PUBLIC UTILITY EASEMENT

**NOTES:**

ALL DIMENSIONS SHOWN HEREON ARE RECORD AND MEASURED PER RECORD MAP FILED IN BOOK 11 OF MAPS, AT PAGE 22, M.C.R. UNLESS NOTED OTHERWISE.

**BASIS OF BEARINGS**

S 42°08'25" W BETWEEN FOUND STREET MONUMENTS AS SHOWN ON RECORD MAP FILED IN BOOK 11 OF MAPS, AT PAGE 22, MARIN COUNTY RECORDS.



2300 bethards drive, suite J  
santa rosa, california 95405  
p 707.542.8513 - f 707.542.1825  
www.michaelfordinc.com