

### CORNER RECORD

COUNTY OF Marin T. 1 IN 6W MDB 6W MERIDIAN CALIFORNIA  
 CORNER TYPE: GOVT. CORNER  MEANDER  RANCHO  CONTROL  OTHER   
 CORNER IDENTIFICATION - DATE OF VISIT August 14, 1987



Southeast corner of Lot 19, Paradise Cay Map No. 4 (14RM50)  
 AP #38-222-28

CORNER - LEFT AS FOUND  FOUND AND TAGGED  REESTABLISHED OBLITERATED CORNER  RESULT

**PHYSICAL DESCRIPTION OF CORNER FOUND, EVIDENCE AND METHOD USED TO IDENTIFY OR REESTABLISH**

Found Standard Street Monuments at centerline of St. Thomas Way were used to re-establish the location of the obliterated southeast corner of Lot 19, holding record dimensions per 14RM50.

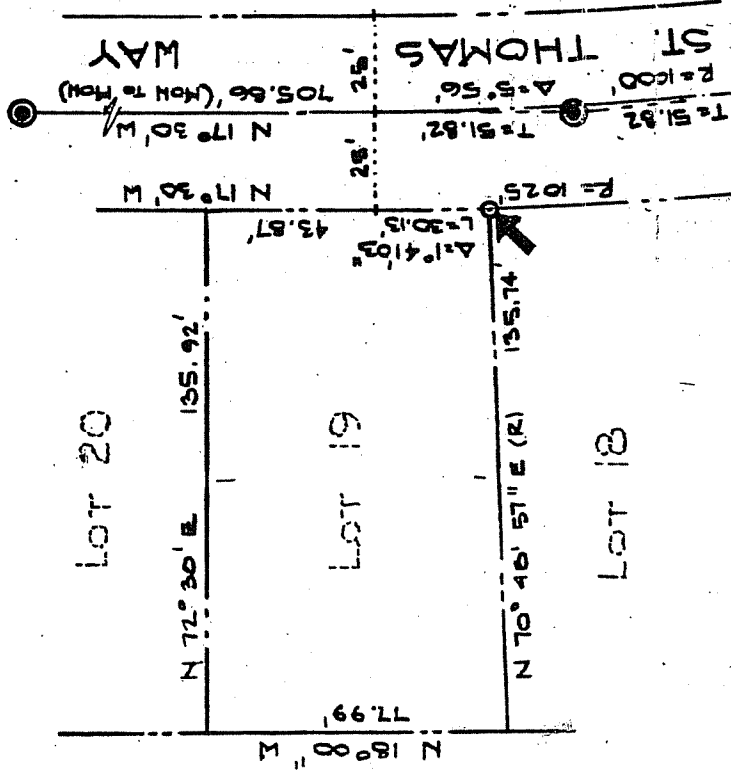
**PHYSICAL DESCRIPTION OF MONUMENTS RESULT OR PERPETUATED**

A 3/4"x 24" galvanized iron pipe monument was set and capped RCE 23382.

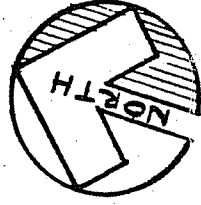
CALIFORNIA COORDINATE SYSTEM ORDER: FIRST  SECOND  THIRD   
 STATIONS USED: NOS (USC & GS)  COUNTY  OTHER  STATION \_\_\_\_\_ STATION \_\_\_\_\_  
 ZONE \_\_\_\_\_ ELEVATION \_\_\_\_\_ NORTHINGS (N) \_\_\_\_\_ EASTINGS (E) \_\_\_\_\_

(Fold)

SKETCH: (Include reference to or witness points, remarks and topo of area)



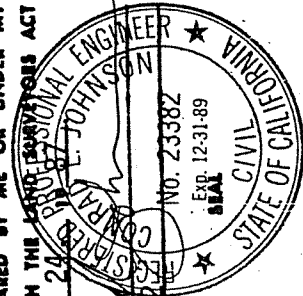
- FOUND STD. STREET MON. PER 14RM 50
- SET 3/4" PIPE & CAP (RCE 23382)



1" = 50'

**SURVYOR'S CERTIFICATE**

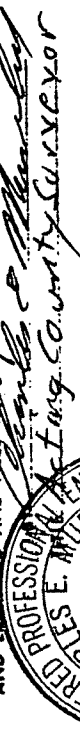
THIS CORNER RECORD WAS PREPARED BY ME OR UNDER MY DIRECTION IN CONFORMANCE WITH THE PROFESSIONAL ENGINEERS ACT ON August 24, 1987



SIGNED: \_\_\_\_\_  
 I.S. or R.C.E. No.: RCE 23382

**COUNTY SURVYOR'S CERTIFICATE**

THE CORNER RECORD WAS RECEIVED Aug 27, 1987 AND EXAMINED AND FILED Aug 31, 1987



SIGNED: \_\_\_\_\_  
 STATEMENT NO. 18852  
 Exp. 6-30-89

YES  NO

### CORNER RECORD

COUNTY OF Marin T. IN S. 6W MDB MERIDIAN CALIFORNIA  
 CORNER TYPE: GOVT. CORNER  MEANDER  RANCHO  CONTROL  OTHER   
 CORNER IDENTIFICATION - DATE OF VISIT August 14, 1987



Northeast corner of Lot 19, Paradise Cay Map No. 4 (14RM50)  
 AP #38-222-28

CORNER - LEFT AS FOUND  FOUND AND TAGGED  REESTABLISHED OBLITERATED CORNER  RESULT

PHYSICAL DESCRIPTION OF CORNER FOUND, EVIDENCE AND METHOD USED TO IDENTIFY OR REESTABLISH

Found Standard Street Monuments at centerline of St. Thomas Way were used to re-establish the location of the obliterated northeast corner of Lot 19, holding record dimensions per 14RM50.

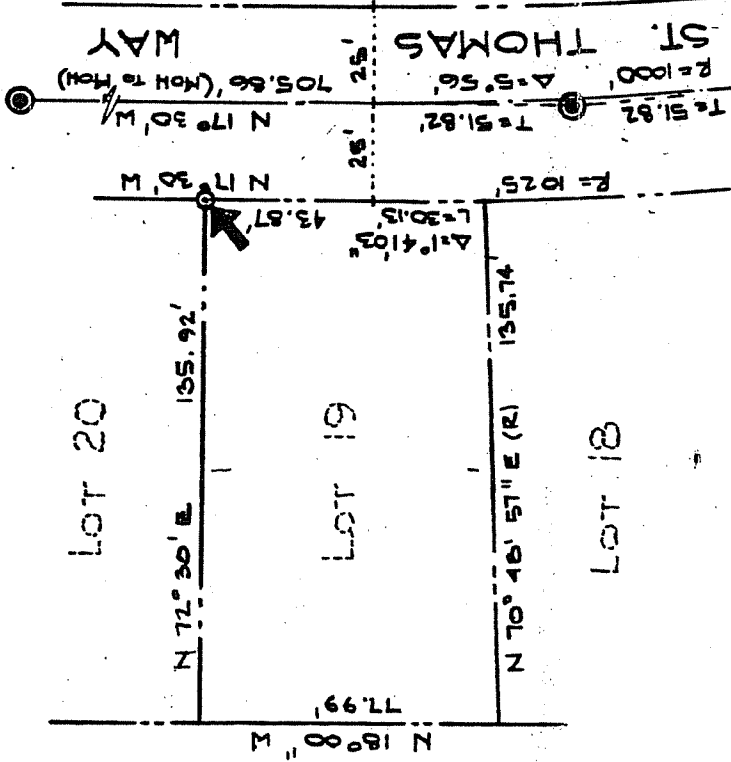
PHYSICAL DESCRIPTION OF MONUMENTS RESULT OR PERPETUATED

A brass tag (RCE 23382) was set in 3"x4" redwood trim board along southerly edge of 3'-6" ± wide brick path walkway.

CALIFORNIA COORDINATE SYSTEM ORDER: FIRST  SECOND  THIRD   
 STATIONS USED: NOS (USC & OS)  COUNTY  OTHER  STATION   
 ZONE \_\_\_\_\_ ELEVATION \_\_\_\_\_ NORTHINGS (N) \_\_\_\_\_ EASTINGS (E) \_\_\_\_\_

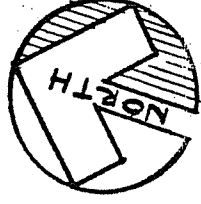
(Fold)

SKETCH: (Include reference file or witness points, remarks and topo of area)



● FOUND STD. STREET MON. PER 14RM50

○ SET BRASS TAG (RCE23382) IN 3x4" TRIM BOARD AT SOUTHERLY EDGE OF BRICK PAVED WALKWAY

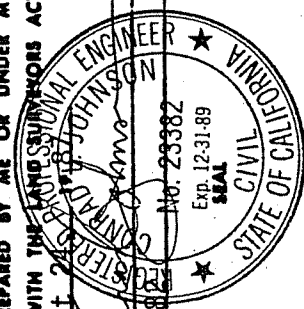


1" = 50'

SURVIVOR'S CERTIFICATE

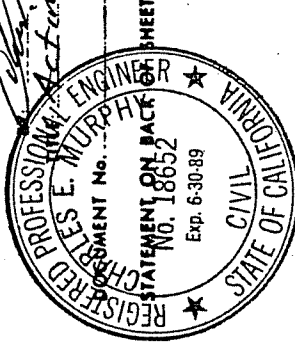
THIS CORNER RECORD WAS PREPARED BY ME OR UNDER MY DIRECTION IN CONFORMANCE WITH THE PROFESSIONAL ENGINEERS ACT ON AUGUST 24, 1987

SIGNED: Gregory W. Johnson No. 23382 Exp. 12-31-89  
 I.S. or R.C.E. No.: RCE 23382



COUNTY SURVIVOR'S CERTIFICATE

THE CORNER RECORD WAS RECEIVED AUG 27, 1987 AND EXAMINED AND FILED AUG 31, 1987

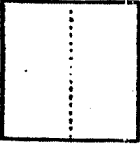


YES  NO



### CORNER RECORD

COUNTY OF Marin T. 1 IN 6W MERIDIAN MDB CALIFORNIA  
 CORNER TYPE: GOV'T. CORNER  MEANDER  RANCHO  CONTROL  OTHER   
 CORNER IDENTIFICATION - DATE OF VISIT August 14, 1987



Point on line between Lots 19 & 20, Paradise Cay Map No. 4 (14RM50)  
 AP #38-222-28

CORNER -- LEFT AS FOUND  FOUND AND TAGGED  REESTABLISHED OBLITERATED CORNER  RESULT

PHYSICAL DESCRIPTION OF CORNER FOUND, EVIDENCE AND METHOD USED TO IDENTIFY OR REESTABLISH

Found Standard Street Monuments at centerline of St. Thomas Way were used to establish the location of the line between Lots 19 & 20, holding record dimensions per 14RM50 (see sketch below).

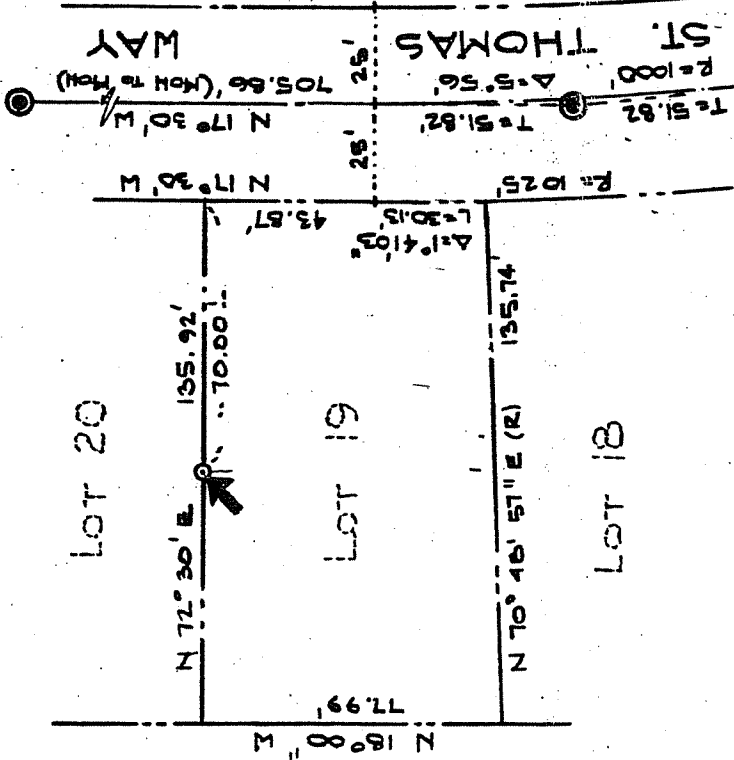
PHYSICAL DESCRIPTION OF MONUMENTS RESULT OR PERPETUATED

A lead plug and brass tag (RCE 23382) was set in brick paved walkway (1.5' northerly of south edge of walkway).

CALIFORNIA COORDINATE SYSTEM ORDER: FIRST  SECOND  THIRD  STATION \_\_\_\_\_  
 STATIONS USED: MGS (USC & GS)  COUNTY  OTHER  EASTINGS (N) \_\_\_\_\_  
 ZONE \_\_\_\_\_ ELEVATION \_\_\_\_\_ NORTHINGS (Y) \_\_\_\_\_

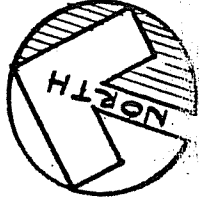
(Fold)

SKETCH: (Include reference to or witness points, remarks and topo of area)



● FOUND STD. STREET MON. PER 14RM50

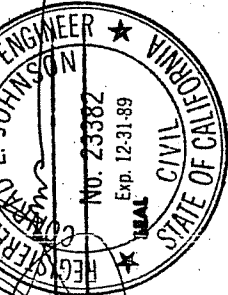
● SET LEAD PLUG & BRASS TAG (RCE 23382) IN BRICK PAVED WALKWAY



1" = 50'

SURVIVOR'S CERTIFICATE

THIS CORNER RECORD WAS PREPARED BY ME OR UNDER MY DIRECTION IN CONFORMANCE WITH THE LAND SURVEYOR'S ACT ON August 24, 1987

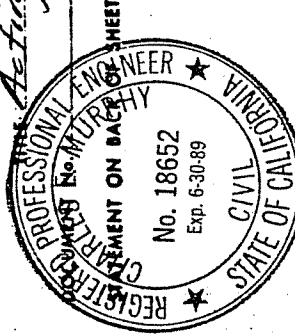


SIGNED: Kenneth F. Johnson REALTOR  
 L.S. or R.C.E. No.: RCE 23382

COUNTY SURVIVOR'S CERTIFICATE

THE CORNER RECORD WAS RECEIVED AND EXAMINED AND FILED

BY: John E. Murray Acting County Surveyor  
 August 27, 1987



REGISTERED PROFESSIONAL ENGINEER SHEET

YES  NO