

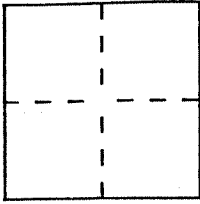
CORNER RECORD

Document Number A.P.# 38-201-20 & 21

City of TIBURON

County of MARIN, California

Brief Legal Description LOTS 19 & 20, PARADISE CAY MAP No. 1, 10 R.M. 28



CORNER TYPE

Government Corner Control
Meander Property
Rancho Other
Date of Survey Nov. 25, 1996

COORDINATES
(Optional)

N. _____
E. _____
Zone _____ Datum _____
Elev. _____

Corner — Left as found Found and tagged Established Reestablished Rebuilt

Identification and type of corner found: Evidence used to identify or procedure used to establish or reestablish the corner:

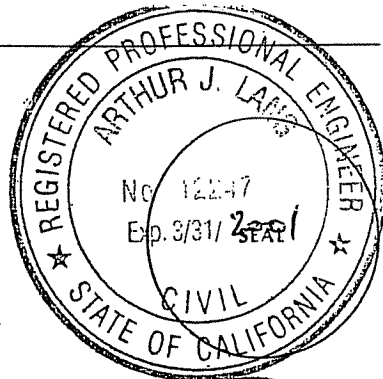
FOUND & STREET MONUMENT AS DESCRIBED ON MAP No. 1
OF PARADISE CAY (10 R.M. 28). SET CORNERS AT STREET
AND POINTS ON PROPERTY LINES ABOVE HIGH
WATER

A description of the physical condition of the monument as found and as set or reset: SEE SKETCH
PAGE 2 OF 2

SURVEYOR'S STATEMENT

This Corner Record was prepared by me or under my direction in conformance with the Land Surveyors' Act on NOVEMBER 25 1996.

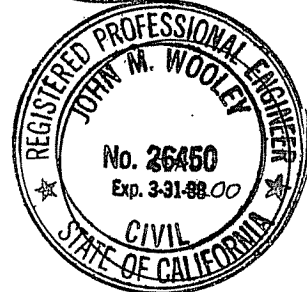
Signed [Signature] L.S. or R.C.E. Number 12247



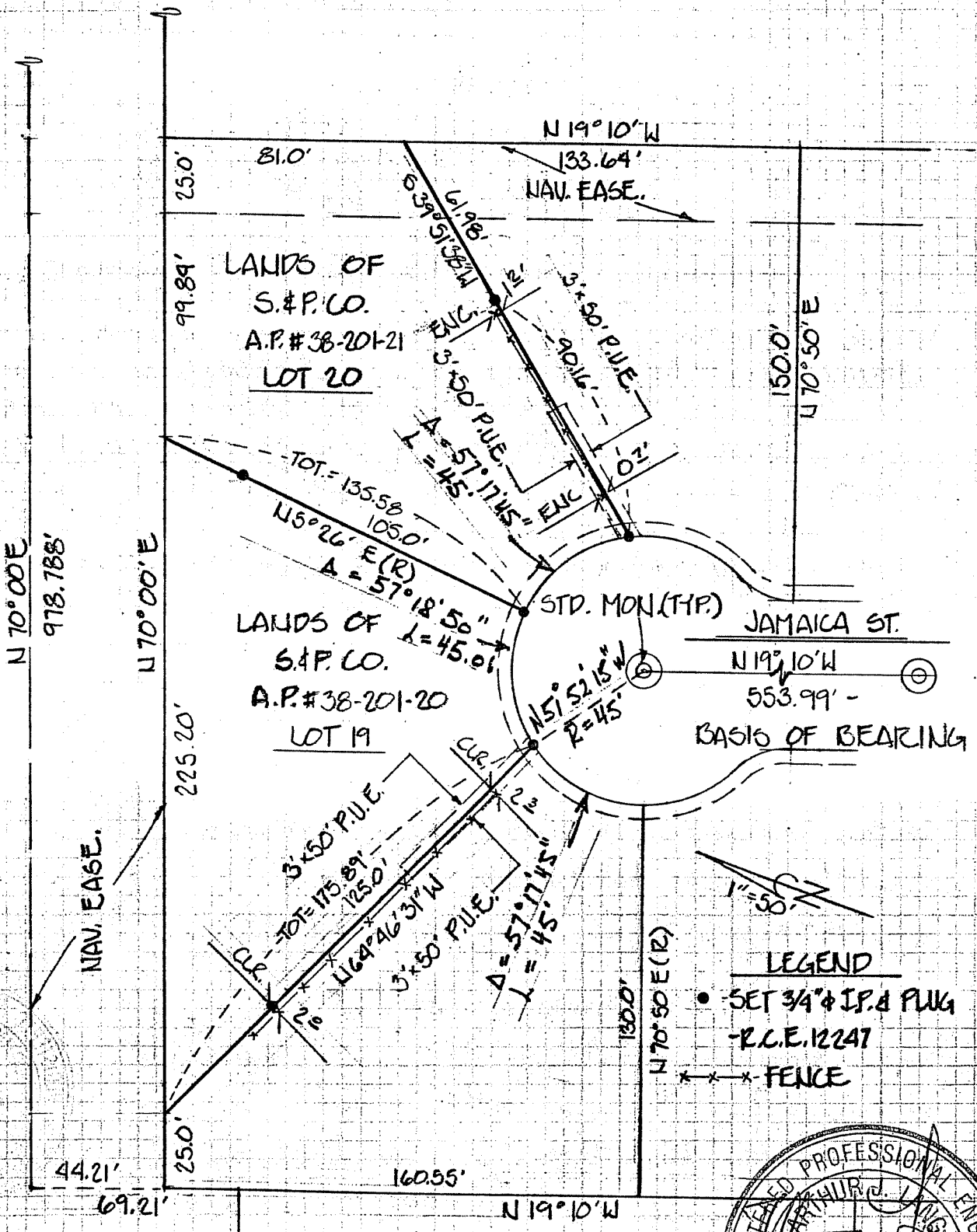
COUNTY SURVEYOR'S STATEMENT

This Corner Record was received APRIL 22 1997 and examined and filed APRIL 25 1997.

Signed [Signature] Title Deputy



County Surveyor's Comment _____



- LEGEND**
- SET 3/4" IP & PLUG
 - R.C.E. 12247
 - FENCE

