

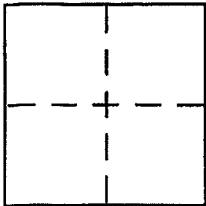
CORNER RECORD

Document Number 038-171-81 (P.T)

City of Tiburon

County of _____, California

Brief Legal Description Portion Lot 65, 5 Maps 90



CORNER TYPE

Government Corner Control
Meander Property
Rancho Other
Date of Survey 28 May 2004

COORDINATES (Optional)

N. _____
E. _____
Zone _____ NAD27 NAD83
NAD83 Epoch _____
Elev. _____
Vert. Datum: NGVD29 NAVD88
Meas. Units: Metric Imperial

Corner - Left as found Found and tagged Established Reestablished Rebuilt

Identification and type of corner found: Evidence used to identify or procedure used to establish or reestablish the corner:

See Page 2 of 2

A description of the physical condition of the monument as found and as set or reset:

See Page 2 of 2

SURVEYOR'S STATEMENT

This Corner Record was prepared by me or under my direction in conformance with the Land Surveyor's Act on 7121104

Signed [Signature] P.L.S or R.C.E. No. 6784

COUNTY SURVEYOR'S STATEMENT

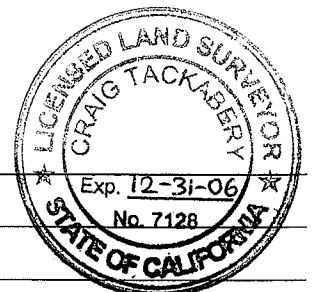
This Corner Record was received AUG. 10, 2004

and examined and filed AUG. 11, 2004

Signed [Signature] P.L.S or R.C.E. No. 7128

Title COUNTY SURVEYOR

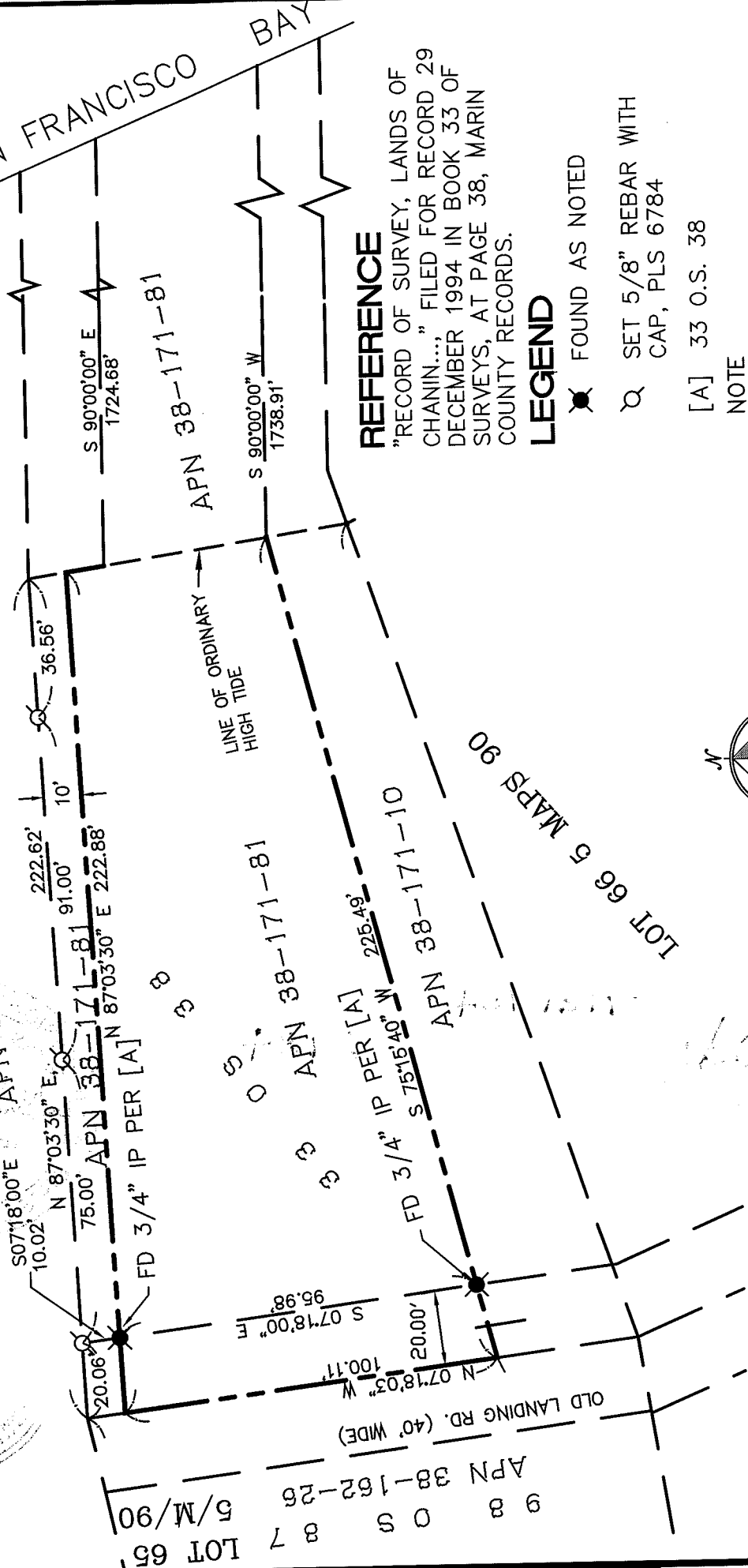
County Surveyor's Comment _____



SAN FRANCISCO BAY

LOT 64

APN 38-171-77



REFERENCE

"RECORD OF SURVEY, LANDS OF CHANIN..." FILED FOR RECORD 29 DECEMBER 1994 IN BOOK 33 OF SURVEYS, AT PAGE 38, MARIN COUNTY RECORDS.

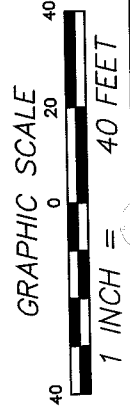
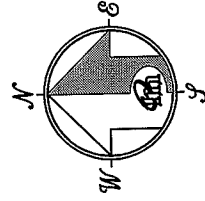
LEGEND

✕ FOUND AS NOTED

⊗ SET 5/8" REBAR WITH CAP, PLS 6784

[A] 33 O.S. 38

NOTE
RECORD=MEASURED



MERIDIAN SURVEYING ENGINEERING, INC.
 1812 UNION STREET
 SAN FRANCISCO, CA 94123
 (415) 440-4131
 info@meridiansurvey.com

777 GRAND AVENUE, SUITE 202
 SAN RAFAEL, CA 94901
 (415) 466-6450

93093A

CORNER RECORD



LOT 65
 5/M/90
 APN 38-162-26
 8 7
 8 8
 9 8

LOT 66 5 MAPS 90

Handwritten signature