

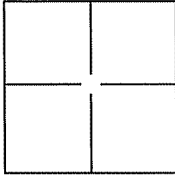
CORNER RECORD

Document Number A.P.N. 38-171-66

City of Tiburon

County of Tiburon, California

Brief Legal Description A.P.N. 38-171-66, 36 Old Landing Road, 2005 M 180.



CORNER TYPE

Government Corner Control
Meander Property
Rancho Other

Date of Survey 26 August 2004

COORDINATES(Optional)

N. _____
E. _____
Zone _____ NAD27 NAD83
NAD83 Epoch _____
Elev. _____
Vert. Datum: NGVD29 NADV88
Meas. Units: Metric Imperial

Corner - Left as found Found and tagged Established Reestablished Rebuilt

Identification and type of corner found: Evidence used to identify or procedure used to establish or reestablish the corner:

Found 1/2" iron pipes (2) along Northerly line per PM 4-22.

Found iron pipes and yellow cap (3) "R.C.E. 18221" along Westerly line, as shown in 2005 M 180.

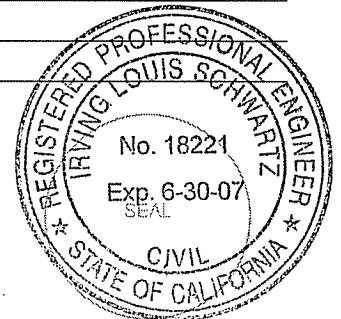
A description of the physical condition of the monument as found and as set or reset:

Set SW and SE corners (2 corners) on A.P.N. 38-171-66, as shown in 2005 M 180, See Exhibit "A".

SURVEYOR'S STATEMENT

This Corner Record was prepared by me or under my direction in conformance with the Land Surveyor's Act on MARCH 21, 2006.

Signed [Signature] P.L.S. or R.C.E. No.: 18221



COUNTY SURVEYOR'S STATEMENT

This Corner Record was received MARCH 23, 2006 and examined and filed APRIL 25, 2006.

Signed [Signature] P.L.S. or R.C.E. No.: 7128

Title COUNTY SURVEYOR

County Surveyor's Comment _____



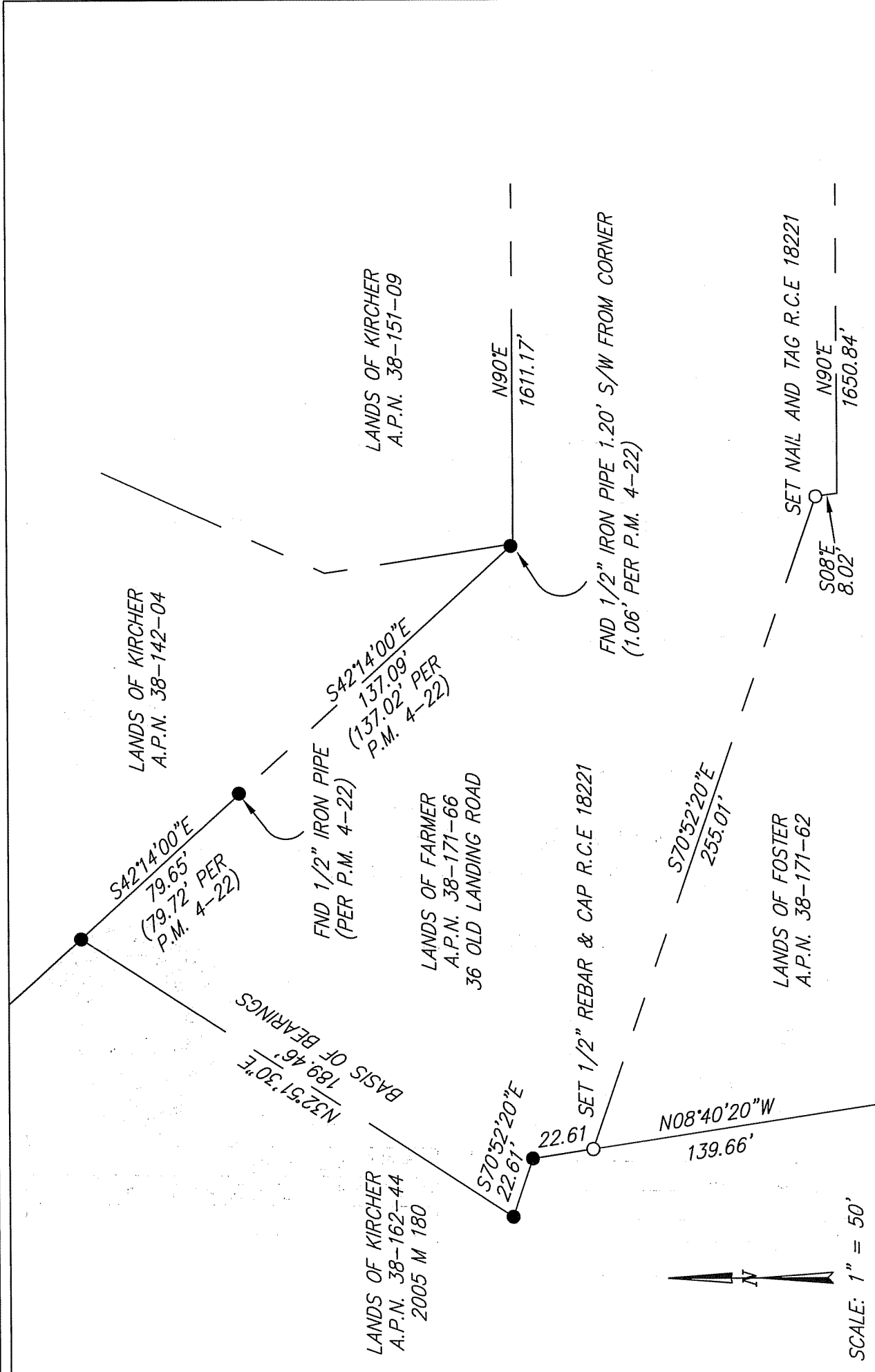


EXHIBIT "A"



ILS ASSOCIATES, INC.
 CIVIL ENGINEERING AND LAND SURVEYING

79 GALLI DRIVE, SUITE A NOVATO, CA 94949-5717 (415)883-9200 FAX (415)883-2763

NOTE.
 ALL DIMENSIONS AND BEARINGS
 SHOWN HEREON ARE PER 2005 RM 180
 UNLESS NOTED OTHERWISE.

LEGEND
 ● FOUND IRON PIPE & YELLOW CAP "R.C.E. 18221"
 ○ SET AS NOTED

SCALE: 1" = 50'