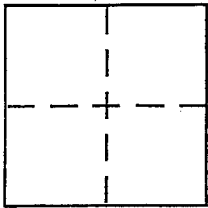


**CORNER RECORD**

Document Number 038-162-54

City of Tiburon <sup>Parcel</sup> County of MARIN, California

Brief Legal Description LOT 1, 2002 MAPS 253



**CORNER TYPE**

Government Corner  Control   
Meander  Property   
Rancho  Other   
Date of Survey \_\_\_\_\_

**COORDINATES (Optional)**

N. \_\_\_\_\_  
E. \_\_\_\_\_  
Zone \_\_\_\_\_ NAD27  NAD83   
NAD83 Epoch \_\_\_\_\_  
Elev. \_\_\_\_\_  
Vert. Datum: NGVD29  NAVD88   
Meas. Units: Metric  Imperial

Corner - Left as found  Found and tagged  Established  Reestablished  Rebuilt

Identification and type of corner found: Evidence used to identify or procedure used to establish or reestablish the corner:

Found Subdivision Monuments on Old Landing Road  
as shown on 2002 PM 253.

A description of the physical condition of the monument as found and as set or reset:

Set 3 angle points on West side of LOT 1 as  
shown on sketch on back.

**SURVEYOR'S STATEMENT**

This Corner Record was prepared by me or under my direction in conformance with the Land Surveyor's Act on 12-15-14 <sup>13</sup> (REV 9-29-14)

Signed Michael A. Brogan P.L.S or R.C.E. No. LS 5767  
Chief of Surveys - Marin Co DPW

**COUNTY SURVEYOR'S STATEMENT**

This Corner Record was received 9/15/14

and examined and filed 9-24-2014

Signed Richard G. Simonitch P.L.S or R.C.E. No. 7821

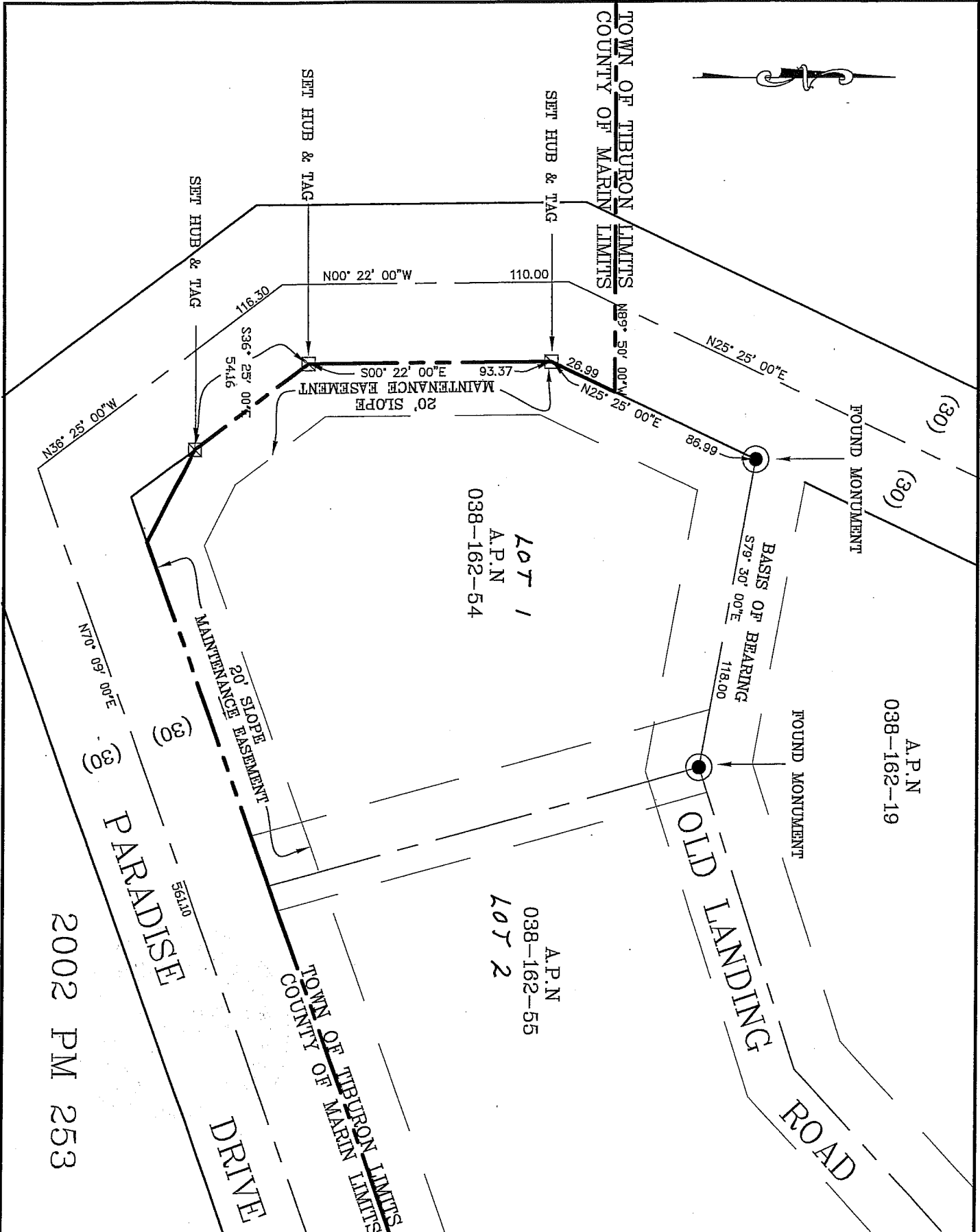
Title DEPUTY

County Surveyor's Comment \_\_\_\_\_





TOWN OF TIBURON LIMITS  
COUNTY OF MARIN LIMITS



2002 PM 253

COUNTY OF MARIN  
DEPARTMENT OF PUBLIC WORKS  
SURVEY SECTION

SCALE 1" = 50'

CORNER RECORD