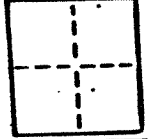


**CORNER RECORD**

COUNTY OF MARIN T. \_\_\_\_\_ R. \_\_\_\_\_ MERIDIAN \_\_\_\_\_ CALIFORNIA

CORNER TYPE: GOVT. CORNER  MEANDER  RANCHO  CONTROL  OTHER

CORNER IDENTIFICATION — DATE OF VISIT \_\_\_\_\_ 19\_\_\_\_



CORNER — LEFT AS FOUND  FOUND AND TAGGED  REESTABLISHED OBLITERATED CORNER  REBUILT

PHYSICAL DESCRIPTION OF CORNER FOUND; EVIDENCE AND METHOD USED TO IDENTIFY OR REESTABLISH

A.P. No. 38-142-04

TIBURON

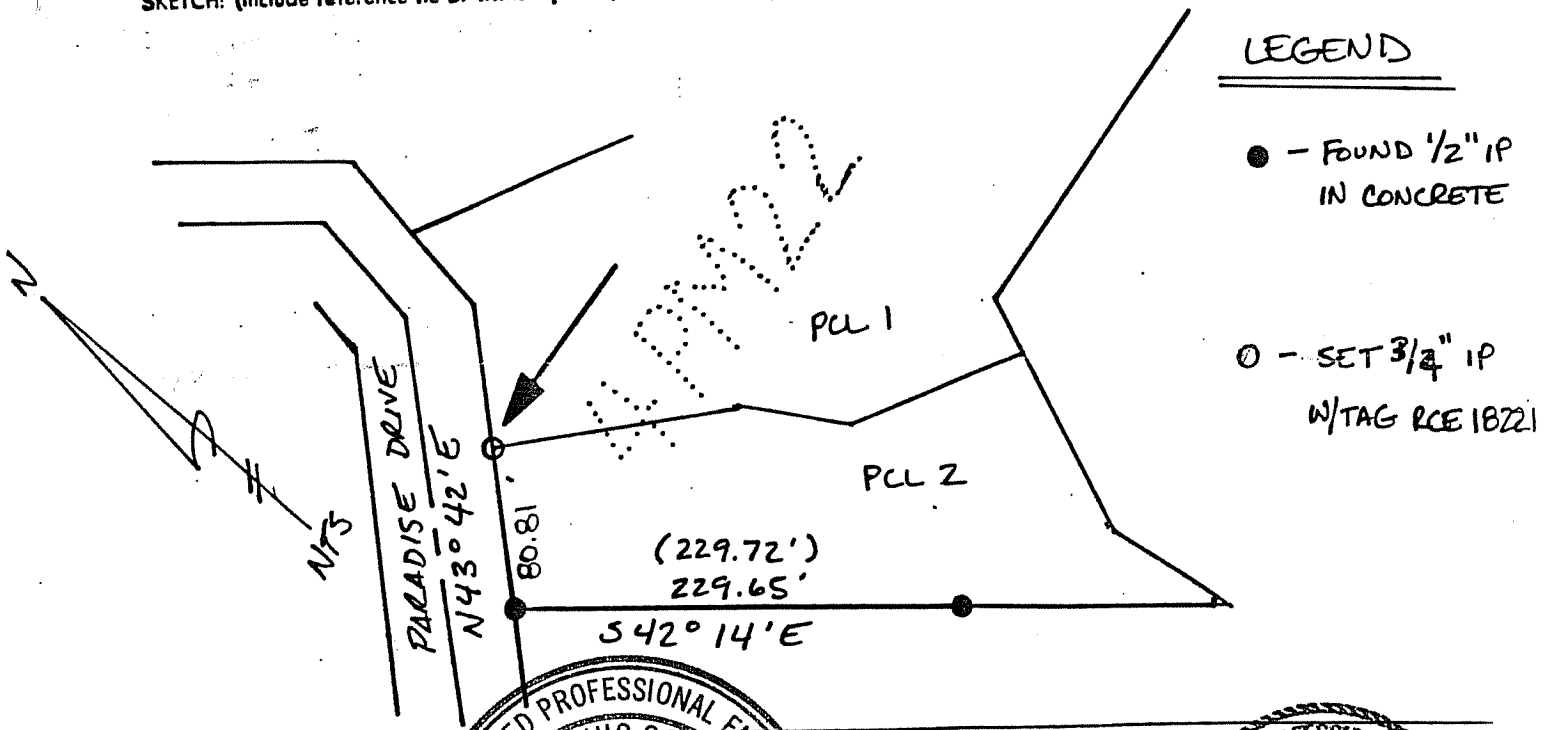
PHYSICAL DESCRIPTION OF MONUMENTS REBUILT OR PERPETUATED  
 SET 3/4" IP W/TAG RCE 18221 FOR THE NORTHEASTERLY CORNER OF PARCEL 2 AS SHOWN ON PARCEL MAP ENTITLED "LANDS OF CHARLES SIMON ET AL AS DESCRIBED IN DEED RECORDED IN BOOK 2013 OF DEEDS AT PAGE 644 OFFICIAL RECORDS OF MARIN COUNTY", BOOK 4 OF PARCEL MAPS AT PAGE 22, MARIN COUNTY RECORDS

CALIFORNIA COORDINATE SYSTEM ORDER: FIRST  SECOND  THIRD

STATIONS USED: NGS (USC & GS)  STATE  COUNTY  OTHER  STATION \_\_\_\_\_ STATION \_\_\_\_\_

ZONE \_\_\_\_\_ ELEVATION \_\_\_\_\_ NORTHINGS (N) \_\_\_\_\_ EASTINGS (X) \_\_\_\_\_

SKETCH: (Include reference tie or witness points, remarks and topo of area)



LEGEND

- - FOUND 1/2" IP IN CONCRETE
- - SET 3/4" IP W/TAG RCE 18221

SURVEYOR \_\_\_\_\_

THIS CORNER RECORD WAS \_\_\_\_\_ BY ME OR UNDER MY SUPERVISION IN CONFORMANCE WITH THE LAND SURVEYORS ACT ON MAR 21 1993

SIGNED \_\_\_\_\_

L.S. & R.C.E. No. 18221

REGISTERED PROFESSIONAL ENGINEER  
 THEODORE SCHWARTZ  
 No. 18221  
 Exp. 6-30-93  
 CIVIL  
 STATE OF CALIFORNIA

COUNTY SURVEYOR \_\_\_\_\_

THE CORNER RECORD WAS RECEIVED AND EXAMINED AND FILED BY \_\_\_\_\_

TITLE: \_\_\_\_\_

DOCUMENT No. \_\_\_\_\_

STATEMENT ON BACK OF SHEET \_\_\_\_\_

PROFESSIONAL SEAL  
 THEODORE SCHWARTZ  
 C 20272  
 Exp. 3-31-92  
 CIVIL  
 STATE OF CALIFORNIA

# CORNER RECORD

COUNTY OF MARIN T. \_\_\_\_\_ R. \_\_\_\_\_ MERIDIAN \_\_\_\_\_ CALIFORNIA

CORNER TYPE: GOV'T. CORNER  MEANDER  RANCHO  CONTROL  OTHER

CORNER IDENTIFICATION - DATE OF VISIT \_\_\_\_\_ 19\_\_\_\_

CORNER - LEFT AS FOUND  FOUND AND TAGGED  REESTABLISHED OBLITERATED CORNER  REBUILT

PHYSICAL DESCRIPTION OF CORNER FOUND; EVIDENCE AND METHOD USED TO IDENTIFY OR REESTABLISH

A.P. No. 38-142-04

TIBURON

PHYSICAL DESCRIPTION OF MONUMENTS REBUILT OR PERPETUATED

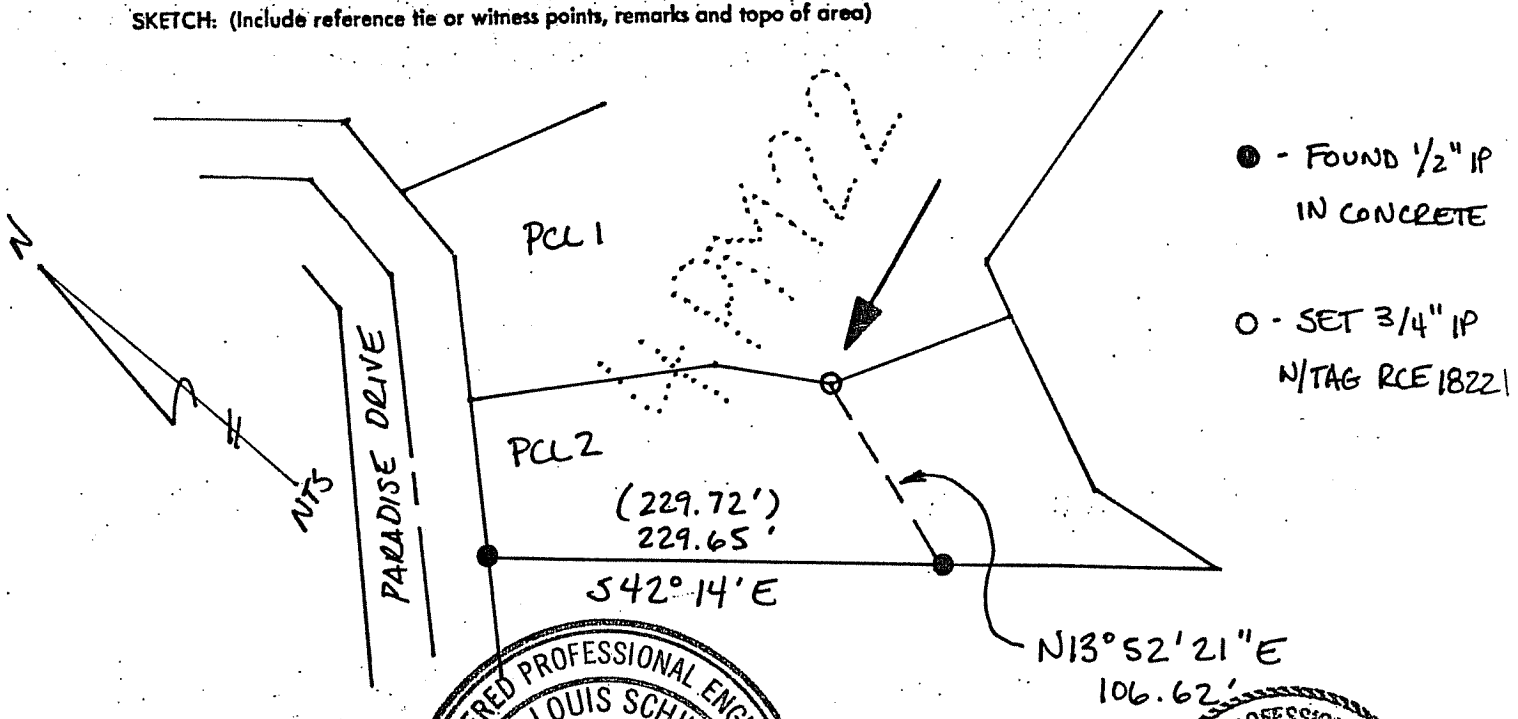
SET 3/4" IP W/TAG RCE 18221 FOR ANGLE POINT ALONG EAST BOUNDARY OF PARCEL 2 AS SHOWN ON PARCEL MAP ENTITLED "LANDS OF CHARLES SIMON ET AL AS DESCRIBED IN DEED RECORDED IN BOOK 2013 OF DEEDS AT PAGE 644 OFFICIAL RECORDS OF MARIN COUNTY", BOOK 4 OF PARCEL MAPS AT PAGE 22, MARIN COUNTY RECORDS

CALIFORNIA COORDINATE SYSTEM ORDER: FIRST  SECOND  THIRD

STATIONS USED: NGS (USC & GS)  STATE  COUNTY  OTHER  STATION \_\_\_\_\_ STATION \_\_\_\_\_

ZONE \_\_\_\_\_ ELEVATION \_\_\_\_\_ NORTHINGS (Y) \_\_\_\_\_ EASTINGS (X) \_\_\_\_\_

SKETCH: (Include reference tie or witness points, remarks and topo of area)



SURVEYOR'S CERTIFICATE

THIS CORNER RECORD WAS PREPARED BY ME OR UNDER MY DIRECTION IN CONFORMANCE WITH THE LAND SURVEYORS ACT ON mmw

SIGNED: \_\_\_\_\_

L.S. or E.C.E. No. 1822

REGISTERED PROFESSIONAL ENGINEER  
 KING LOUIS SCHWARTZ  
 No. 10001  
 Exp. 6-30-93  
 CIVIL  
 STATE OF CALIFORNIA

COUNTY SURVEYOR'S CERTIFICATE

THE CORNER RECORD WAS RECEIVED AND EXAMINED AND FILED BY \_\_\_\_\_

BY: \_\_\_\_\_ Exp. 3-31-02

TITLE: \_\_\_\_\_

DOCUMENT No. \_\_\_\_\_

REGISTERED PROFESSIONAL ENGINEER  
 No. 318  
 Exp. 3-31-02  
 CIVIL  
 STATE OF CALIFORNIA

# CORNER RECORD

3 of 3

COUNTY OF MARIN T. \_\_\_\_\_ R. \_\_\_\_\_ MERIDIAN \_\_\_\_\_ CALIFORNIA

CORNER TYPE: GOVT. CORNER  MEANDER  RANCHO  CONTROL  OTHER

CORNER IDENTIFICATION — DATE OF VISIT \_\_\_\_\_ 19\_\_\_\_

CORNER — LEFT AS FOUND  FOUND AND TAGGED  REESTABLISHED OBLITERATED CORNER  REBUILT

PHYSICAL DESCRIPTION OF CORNER FOUND; EVIDENCE AND METHOD USED TO IDENTIFY OR REESTABLISH

A.P. No. 38-142-04

TIBURON

**PHYSICAL DESCRIPTION OF MONUMENTS REBUILT OR PERPETUATED**

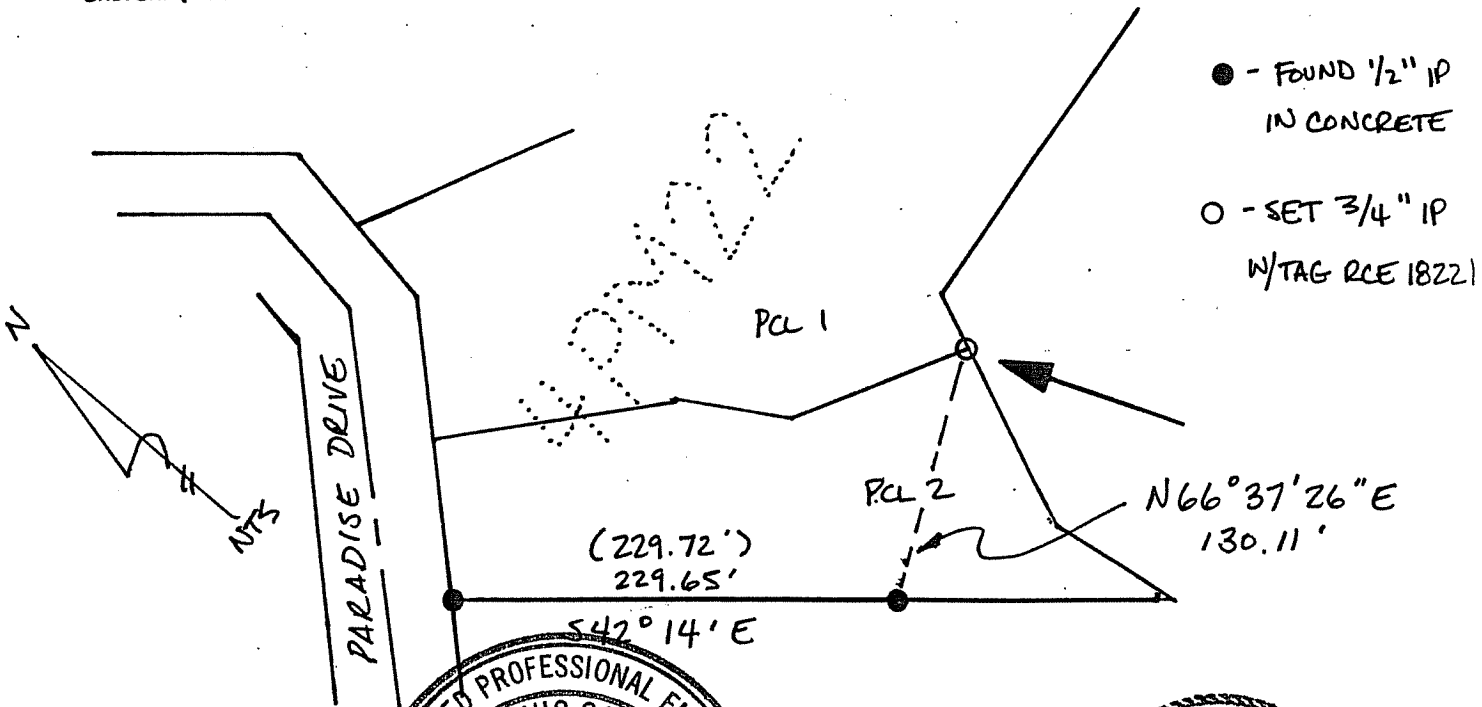
SET 3/4" IP W/TAG RCE 18221 FOR THE SOUTHEASTERLY CORNER OF PARCEL 2 AS SHOWN ON PARCEL MAP ENTITLED "LANDS OF CHARLES SIMON ET AL AS DESCRIBED IN DEED RECORDED IN BOOK 2013 OF DEEDS AT PAGE 644 OFFICIAL RECORDS OF MARIN COUNTY", BOOK 4 OF PARCEL MAPS AT PAGE 22, MARIN COUNTY RECORDS

CALIFORNIA COORDINATE SYSTEM ORDER: FIRST  SECOND  THIRD

STATIONS USED: NGS (USC & GS)  STATE  COUNTY  OTHER  STATION \_\_\_\_\_ STATION \_\_\_\_\_

ZONE \_\_\_\_\_ ELEVATION \_\_\_\_\_ NORTHINGS (Y) \_\_\_\_\_ EASTINGS (X) \_\_\_\_\_

SKETCH: (Include reference tie or witness points, remarks and topo of area)



SURVEYOR'S CERTIFICATE

THIS CORNER RECORD WAS PREPARED BY ME OR UNDER MY SUPERVISION IN THE DIRECTION IN CONFORMANCE WITH THE LAND SURVEYORS ACT ON MMR 6/1/92

SIGNED: [Signature] No. 18221 Exp. 6-30-93

L.S. or R.C.E. No. 18221

COUNTY SURVEYOR'S OFFICE

THE CORNER RECORD WAS RECORDED BY ME AND EXAMINED AND FILED

BY: [Signature] C 58212

TITLE: \_\_\_\_\_ Exp. 3-31-02

DOCUMENT No. \_\_\_\_\_

STATEMENT ON BACK OF S1 \_\_\_\_\_