

CORNER RECORD

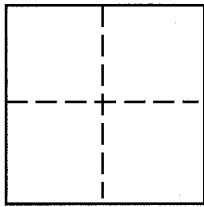
Document Number 38-122-21

City of Tiburon County of Marin, California

Brief Legal Description: Centerlines of Martinique Avenue, Antilles Way, and Jamaica Street, City of Tiburon

CORNER TYPE

COORDINATES (Optional)



Government Corner Control
Meander Property
Rancho Other

N. _____
E. _____
Zone _____ NAD27 NAD83
NAD83 Epoch _____
Elev. _____
Vert. Datum: NGVD29 NAVD88
Meas. Units: Metric Imperial

Date of Survey September 26, 2013

Corner - Left as found Found and tagged Established Reestablished Rebuilt

Identification and type of corner found: Evidence used to identify or procedure used to establish or reestablish the corner:

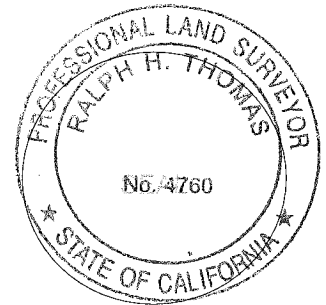
In the course of resurfacing the streets in this area, the paving contractor removed five (5) existing centerline monuments. I was asked to replace the monuments as close as possible to their original position. I was able to establish a good baseline along Martinique, between Antilles and St. Thomas. All remaining monuments on Martinique were essentially on line and the overall distance fit the map distance within 0.07'. The monument south of Martinique on Antilles was replaced using the direction between the existing (continued on Pg. 2)

A description of the physical condition of the monument as found and as set or reset: All monuments as described above had been removed in the course of street reconstruction. They were replaced with a 2" brass disk, stamped PLS 4760, in a well monument.

SURVEYOR'S STATEMENT

This Corner Record was prepared by me or under my direction in conformance with the Land Surveyor's Act on OCTOBER 17, 2013

Signed Ralph H. Thomas P.L.S. OR R.C.E. No. PLS 4760



COUNTY SURVEYOR'S STATEMENT

This Corner Record was received OCTOBER 21, 2013

and examined and filed NOVEMBER 12, 2013

Signed Richard G. Simonitch P.L.S. OR R.C.E. No. 7821

Title DEPUTY CO. SURVEYOR

County Surveyor's Comment _____



(continued from Pg. 1)

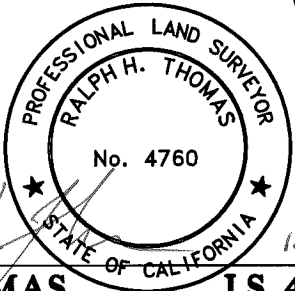
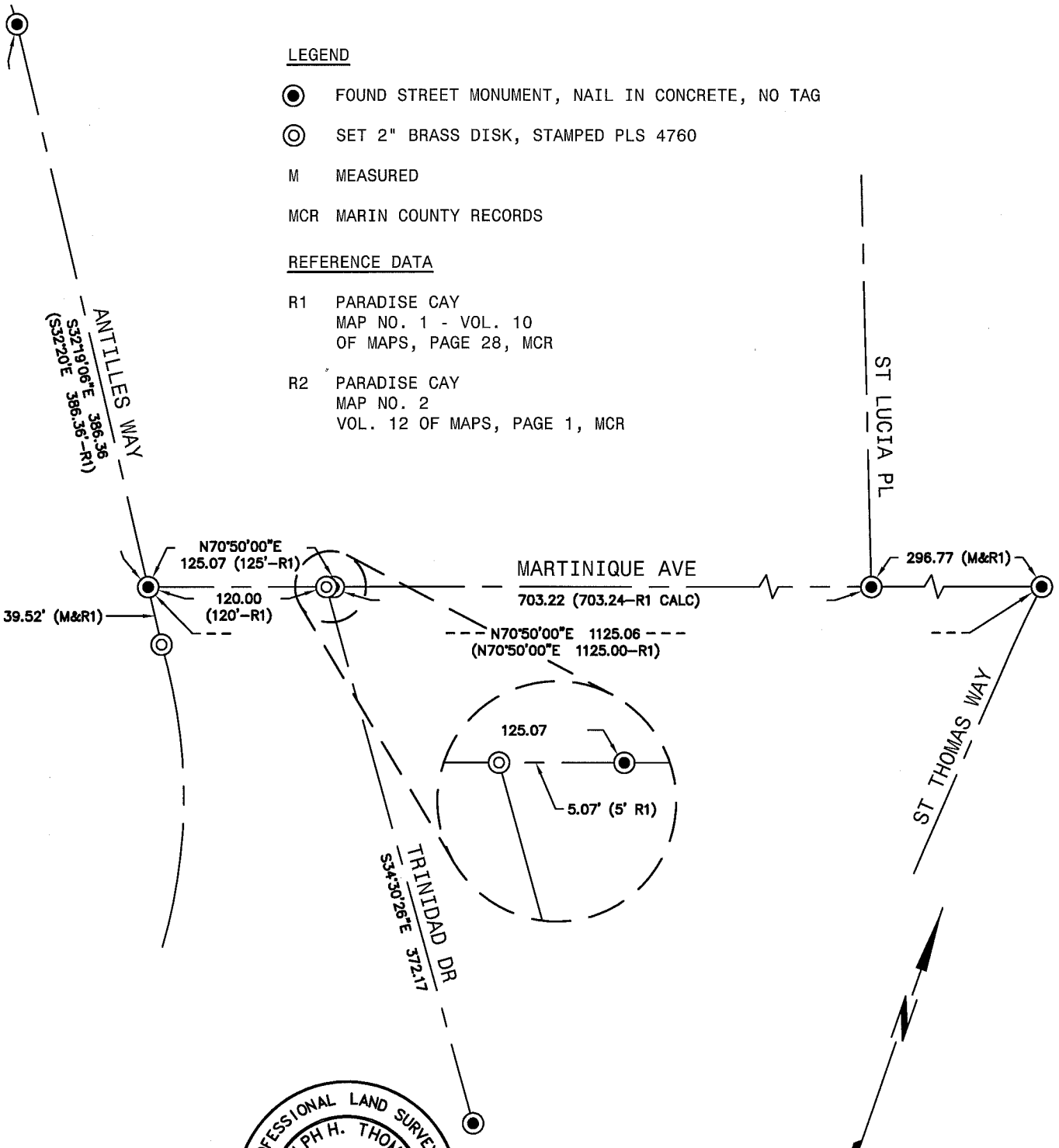
Identification and type of corner found: Evidence used to identify or procedure used to establish or reestablish the corner: monument to the north and the existing monument at Antilles and Martinique. Even though the record angle did not fit the map angle, I held the direction between monuments, and set the location of the monument to the south at 39.52 feet. At Martinique and Trinidad, the westerly of the two monuments was missing. The distance between the two remaining monuments at Antilles and Trinidad (north) was measured to be 125.07'. The record dimension is 125'. I set the position at Martinique and Trinidad (south) at a distance of 120.00' from the monument at Antilles. This position of the new monument fit the record angle between Martinique and the existing monument on Trinidad (south). The new position at Martinique and Jamaica was set using the record dimension from the existing monument at Antilles and Martinique of 475.00 feet. The new monument at Saba Lane and Jamaica was set using the direction established by the newly set point at Jamaica and Martinique and the existing monument south of Saba on Jamaica. The record distance of 44.20 feet was used to establish the position. Heading south on Jamaica the EC monument was set using the closure between the two existing monuments. The distance and angle fit with the record dimensions and the new position was set at the map location.

LEGEND

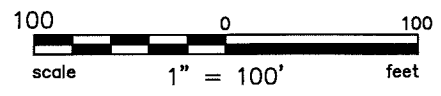
- FOUND STREET MONUMENT, NAIL IN CONCRETE, NO TAG
- SET 2" BRASS DISK, STAMPED PLS 4760
- M MEASURED
- MCR MARIN COUNTY RECORDS

REFERENCE DATA

- R1 PARADISE CAY
MAP NO. 1 - VOL. 10
OF MAPS, PAGE 28, MCR
- R2 PARADISE CAY
MAP NO. 2
VOL. 12 OF MAPS, PAGE 1, MCR



Ralph H. Thomas
RALPH H. THOMAS **LS 4760** 10/17/13

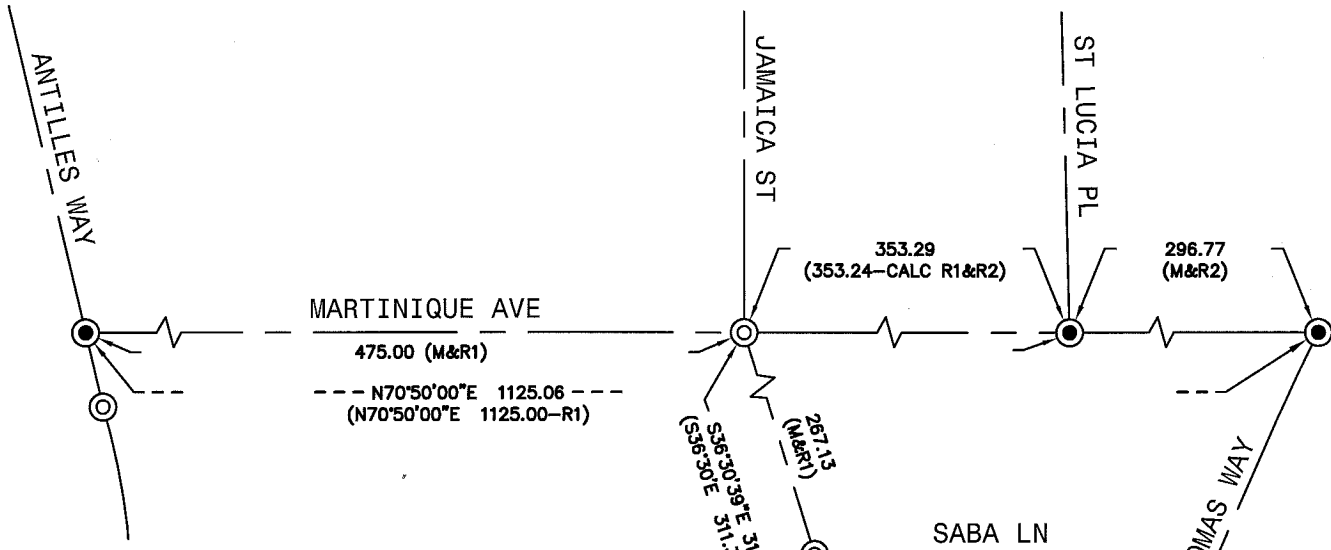


Plot Oct 17, 2013 at 3:23pm



325 TESCONI CIRCLE
 SANTA ROSA, CA 95401
 PH: 707-583-8500
 FAX: 707-583-8539

Subject RE-SET MISSING MONUMENTS
ANTILLES WAY, MARTINIQUE AVE, TIBURON
 Job No. 20139111-50
 By CAG Date 10/03/13 Chkd. RHT
 SHEET 3 OF 4

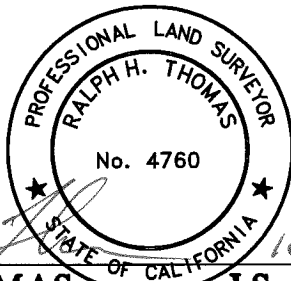
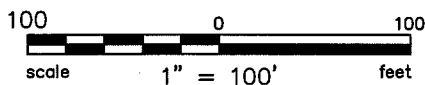


LEGEND

- FOUND STREET MONUMENT, NAIL IN CONCRETE, NO TAG
- ⊙ SET 2" BRASS DISK, STAMPED PLS 4760
- M MEASURED
- MCR MARIN COUNTY RECORDS

REFERENCE DATA

- R1 PARADISE CAY
MAP NO. 1 - VOL. 10
OF MAPS, PAGE 28, MCR
- R2 PARADISE CAY
MAP NO. 2
VOL. 12 OF MAPS, PAGE 1, MCR



Ralph H. Thomas
RALPH H. THOMAS

10/17/13
LS 4760



325 TESCONI CIRCLE
SANTA ROSA, CA 95401
PH: 707-583-8500
FAX: 707-583-8539

Subject RE-SET MISSING MONUMENTS
MARTINIQUE AVE, JAMAICA ST, TIBURON
Job No. 20139111-50
By CAG Date 10/03/13 Chkd. RHT
SHEET 4 OF 4