

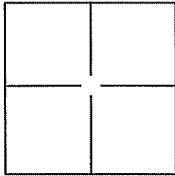
# CORNER RECORD

Document Number A.P.N. 038-111-05

City of Tiburon

County of Marin, California

Brief Legal Description Lands of Pourian And Pressman, Paradise Drive, 2011 OS 59.



**CORNER TYPE**

Government Corner  Control   
 Meander  Property   
 Rancho  Other

Date of Survey 9 August 2011

**COORDINATES(Optional)**

N. \_\_\_\_\_  
 E. \_\_\_\_\_  
 Zone \_\_\_\_\_ NAD27N  AD83   
 NAD83 Epoch \_\_\_\_\_  
 Elev. \_\_\_\_\_  
 Vert. Datum: NGVD29  NADV88   
 Meas. Units: Metric  Imperial

Corner - Left as found  Found and tagged  Established  Reestablished  Rebuilt

Identification and type of corner found: Evidence used to identify or procedure used to establish or reestablish the corner:

Found 3/4" Iron Pipe and Tag L.S. 2731 and Found Railroad Spike in Asphalt Concrete  
per 2011 OS 59, See Exhibit "B".

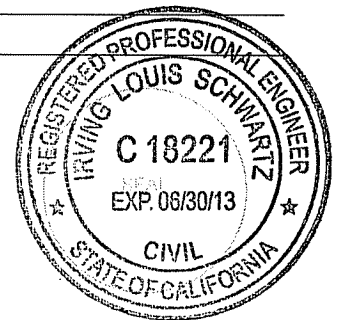
A description of the physical condition of the monument as found and as set or reset: \_\_\_\_\_

Set SW and SE corners (2 corners) on Proposed Easement of Lands of Pourian and Pressman  
per 2011 OS 59, See Exhibit "A".

**SURVEYOR'S STATEMENT**

This Corner Record was prepared by me or under my direction in conformance with  
 the Land Surveyor's Act on OCTOBER 31, 2011.

Signed [Signature] P.L.S. or R.C.E. No.: 18221



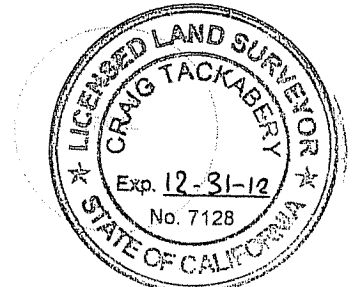
**COUNTY SURVEYOR'S STATEMENT**

This Corner Record was received NOVEMBER 2, 2011 and examined  
 and filed NOVEMBER 8, 2011

Signed [Signature] P.L.S. or R.C.E. No.: 7128

Title COUNTY SURVEYOR

County Surveyor's Comment \_\_\_\_\_





**ILS ASSOCIATES, INC.®**  
Civil Engineering & Land Surveying  
79 Galli Drive, Suite A  
Novato, Ca 94949-5717  
(415)883-9200 FAX (415)883-2763

DRAWN:

SJM/HS

JOB NO:

8527

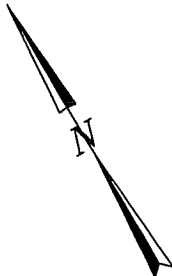
DATE:

10\10\11

SHEET NO.

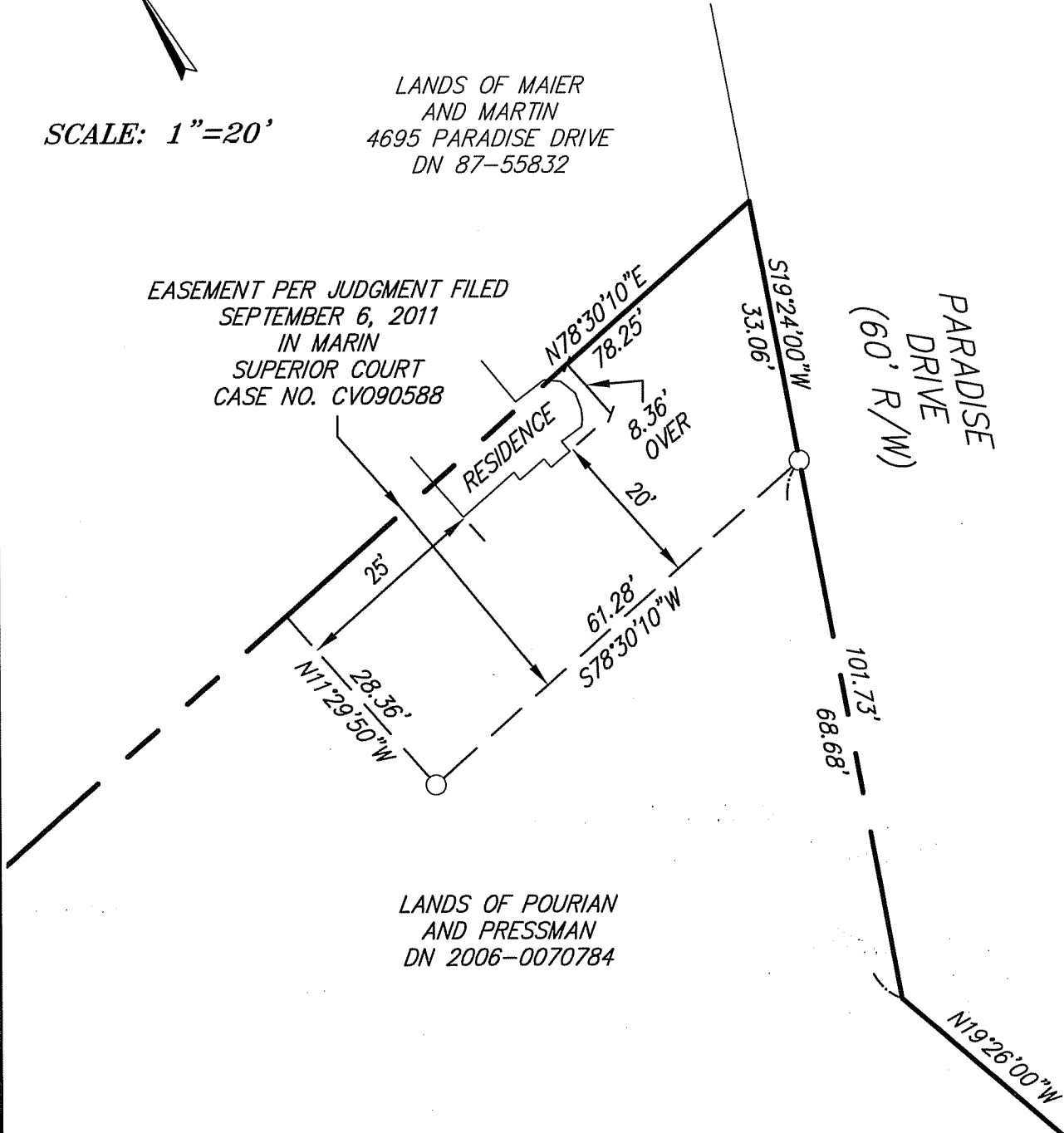
2 OF 3

## EXHIBIT A

  
**SCALE: 1"=20'**

LANDS OF MAIER  
AND MARTIN  
4695 PARADISE DRIVE  
DN 87-55832

EASEMENT PER JUDGMENT FILED  
SEPTEMBER 6, 2011  
IN MARIN  
SUPERIOR COURT  
CASE NO. CVO90588



PARADISE  
DRIVE  
(60' R/W)

LANDS OF POURIAN  
AND PRESSMAN  
DN 2006-0070784

### LEGEND

○ SET 3/4" IRON PIPE &  
YELLOW CAP "R.C.E. 18221"

### NOTE:

ALL DIMENSIONS AND BEARINGS  
SHOWN HEREON ARE PER 2011 OS 59.

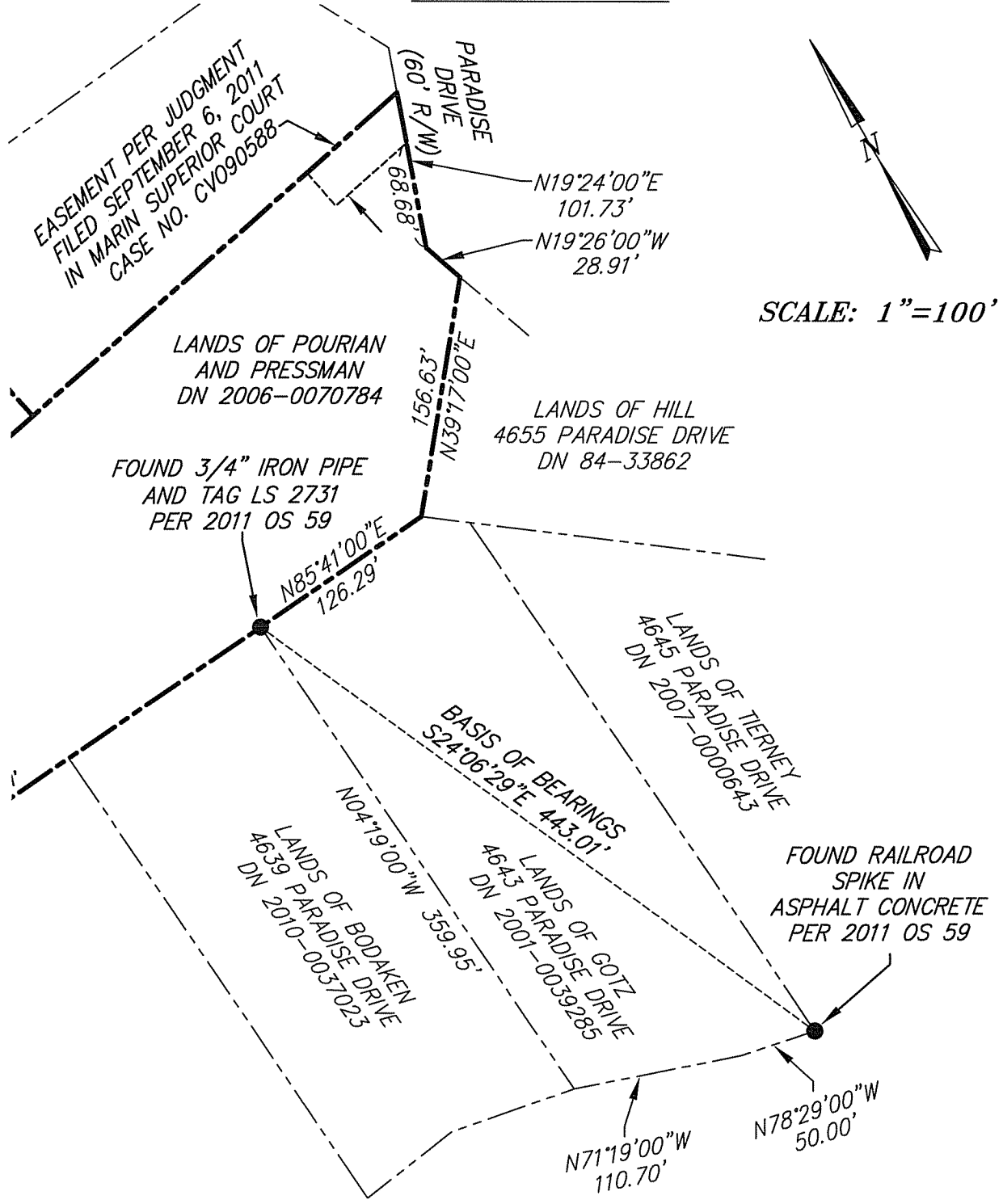
APN 038-111-05



**ILS ASSOCIATES, INC.®**  
 Civil Engineering & Land Surveying  
 79 Galli Drive, Suite A  
 Novato, Ca 94949-5717  
 (415)883-9200 FAX (415)883-2763

DRAWN: SJM/HS	JOB NO: 8527
DATE: 10\10\11	SHEET NO. 3 OF 3

## EXHIBIT B



**LEGEND**

● FOUND AS SHOWN

**NOTE:**

ALL DIMENSIONS AND BEARINGS SHOWN HEREON ARE PER 2011 OS 59.

APN 038-111-05