

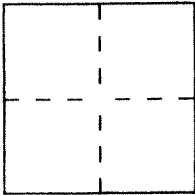
CORNER RECORD

Document Number AP# 38-091-36

City of TIBURON

County of MARIN, California

Brief Legal Description Parcel 2-19 P.M. 27, APN 38-091-36



CORNER TYPE

Government Corner Control
 Meander Property
 Rancho Other
 Date of Survey _____

COORDINATES (Optional)

N. _____
 E. _____
 Zone _____ Datum _____
 Elev. _____

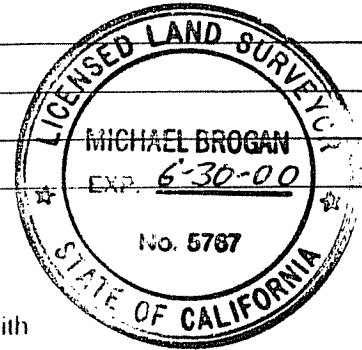
Corner — Left as found Found and tagged Established Reestablished Rebuilt

Identification and type of corner found: Evidence used to identify or procedure used to establish or reestablish the corner:

See Sketch

A description of the physical condition of the monument as found and as set or reset:

See Sketch



SURVEYOR'S STATEMENT

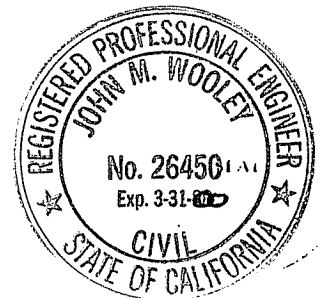
This Corner Record was prepared by me or under my direction in conformance with the Land Surveyors' Act on Nov 29 1999.

Signed Michael A. Brogan L.S. or R.C.E. Number LS 5767

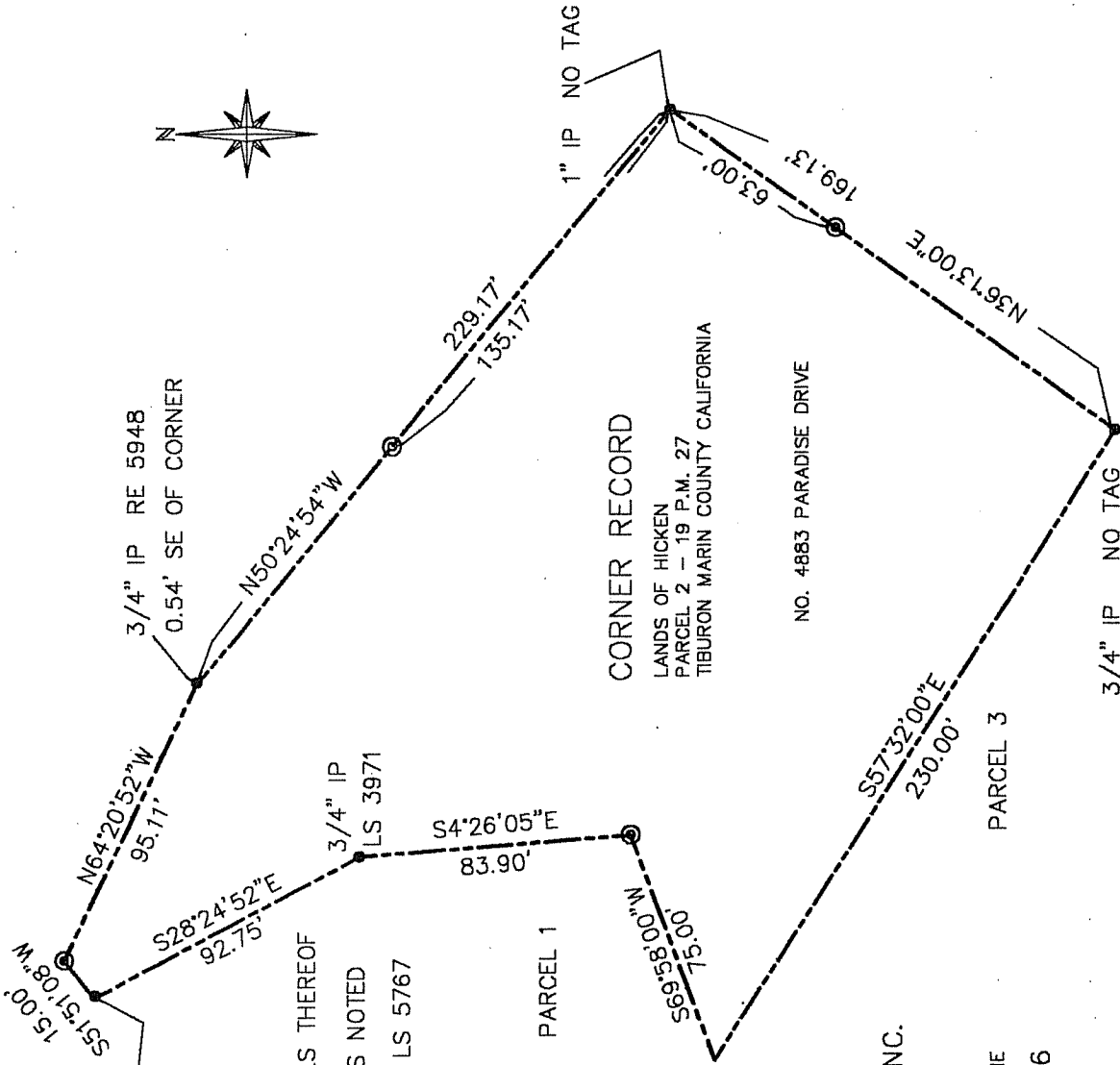
COUNTY SURVEYOR'S STATEMENT

This Corner Record was received NOVEMBER 30 1999 and examined and filed DECEMBER 01 1999.

Signed John M. Woolley Title DEPUTY



County Surveyor's Comment _____



3/4" IP (DISTURBED)
 RCE 12510
 S75°E 0.70 FROM CORNER

NOTES:

ALL DIMENSIONS ARE IN FEET AND DECIMALS THEREOF

- = FOUND MONUMENTATION AS NOTED
- ⊙ = SET 1/2" REBAR WITH CAP LS 5767

M. BROGAN AND ASSOCIATES, INC.

319 MILLER AVENUE
 MILL VALLEY CA 94941
 JOB NO. 5458 NOVEMBER 1999
 NOT TO SCALE SHEET ONE OF ONE

APN 38-091-36