

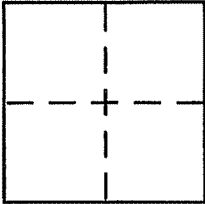
CORNER RECORD

Document Number APN 038-071-18

City of TIBURON

County of MARIN, California

Brief Legal Description PARCEL 1 OF 24 PM 86



CORNER TYPE

Government Corner Control
Meander Property
Rancho Other
Date of Survey 11-27-01

COORDINATES (Optional)

N. _____
E. _____
Zone _____ NAD27 NAD83
NAD83 Epoch _____
Elev. _____
Vert. Datum: NGVD29 NAVD88
Meas. Units: Metric Imperial

Corner - Left as found Found and tagged Established Reestablished Rebuilt

Identification and type of corner found: Evidence used to identify or procedure used to establish or reestablish the corner:

SEE PAGE 2

A description of the physical condition of the monument as found and as set or reset:

SEE PAGE 2

SURVEYOR'S STATEMENT

This Corner Record was prepared by me or under my direction in conformance with the Land Surveyor's Act on NOVEMBER 27 2001

Signed [Signature] P.L.S or R.C.E. No. 6784



COUNTY SURVEYOR'S STATEMENT

This Corner Record was received DECEMBER 3, 2001

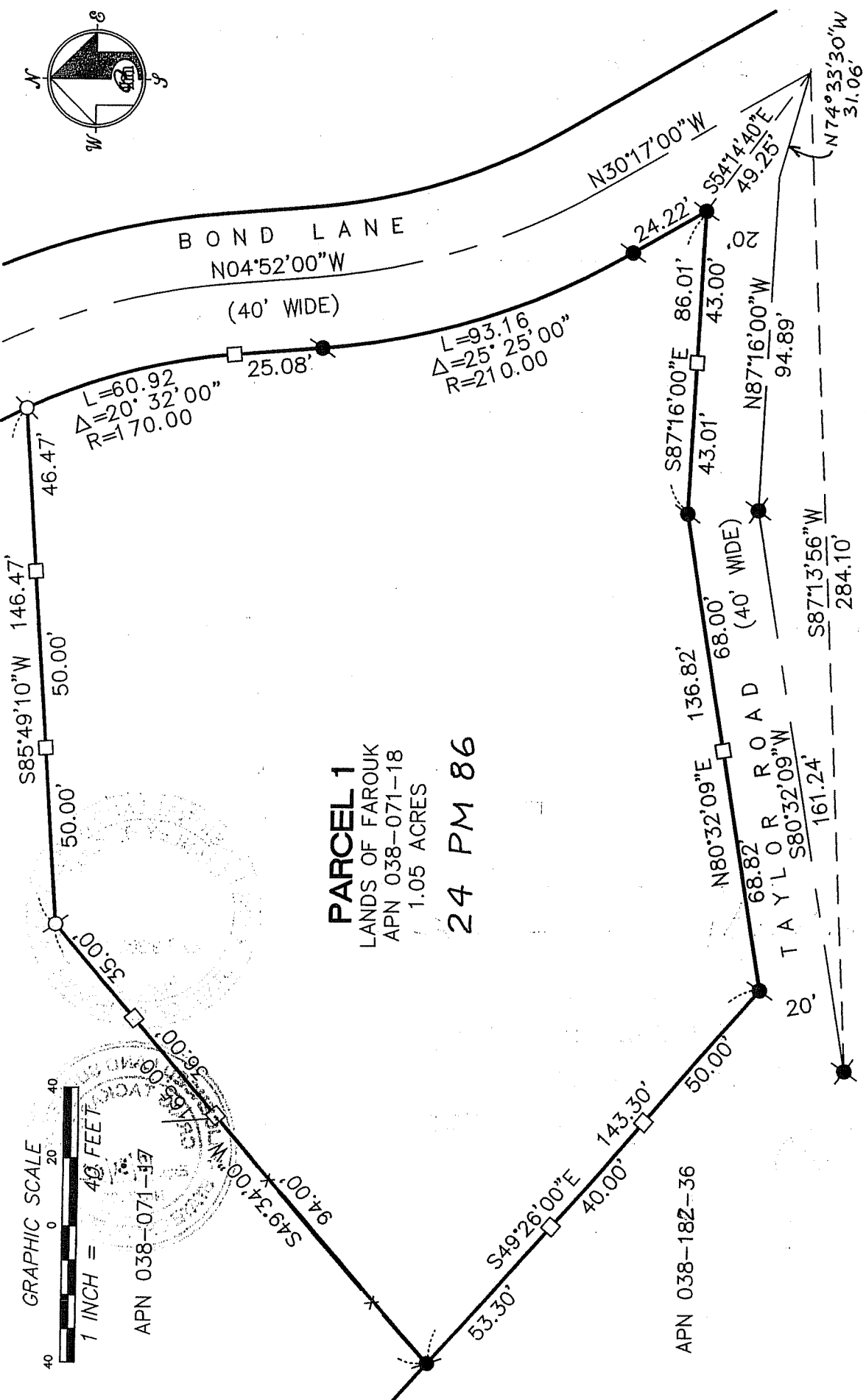
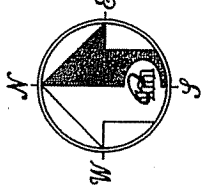
and examined and filed DECEMBER 4, 2001

Signed [Signature] P.L.S or R.C.E. No. 7128

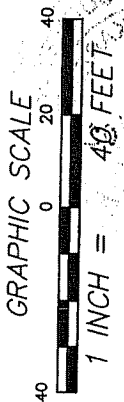
Title DEPUTY



County Surveyor's Comment _____



PARCEL 1
 LANDS OF FAROUK
 APN 038-071-18
 1.05 ACRES
 24 PM 86



APN 038-071-17
 00:36:00
 S49°34'00\"/>

LEGEND

- FOUND CITY MONUMENT
 - FOUND IRON PIPE WITH CAP, RCE 18221
 - SET 5/8" REBAR WITH CAP, PLS 6784
 - SET 2x2 HUB & TACK WITH BRASS TAG, PLS 6784
- NOTE
 RECORD=MEASURED

REFERENCE
 PARCEL MAP FILED FOR RECORD 17
 MAY 1990 IN BOOK 27 OF PARCEL
 MAPS AT PAGE 86, OFFICIAL
 RECORDS OF MARIN COUNTY.

CORNER RECORD

MERIDIAN SURVEYING ENGINEERING, INC.
 1812 UNION STREET
 SAN FRANCISCO, CA 94123
 (415) 440-4151
 fo@meridiansurvey.com

100 DRAKES LANDING RD, #164
 GREENBRAE, CA 94123
 (415) 461-1241