

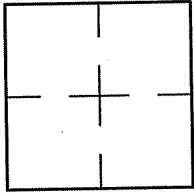
**CORNER RECORD**

Document Number A.P. 038-071-01

City of TIBURON

County of MARIN, California

Brief Legal Description LANDS OF LANGE PER 2011 M 113



CORNER TYPE	COORDINATES (Optional)	
Government Corner <input type="checkbox"/>	Control <input type="checkbox"/>	
Meander <input type="checkbox"/>	Property <input checked="" type="checkbox"/>	
Rancho <input type="checkbox"/>	Other <input type="checkbox"/>	
Date of Survey <u>8/24/11</u>		

N. \_\_\_\_\_  
 E. \_\_\_\_\_  
 Zone \_\_\_\_\_ NAD27  NAD83   
 NAD83 Epoch \_\_\_\_\_  
 Elev. \_\_\_\_\_  
 Vert. Datum: NGVD29  NAVD88   
 Meas. Units: Metric  Imperial

Corner- Left as found  Found and tagged  Established  Reestablished  Rebuilt

Identification and type of corner found: Evidence used to identify or procedure used to establish or reestablish the corner:  
ESTABLISHED THE PROPERTY CORNERS USING FOUND AND SET POINTS PER 2011 M 113 AND AS  
SHOWN ON SHEET 2.

A description of the physical condition of the monument as found and as set or reset: SEE SHEET 2.

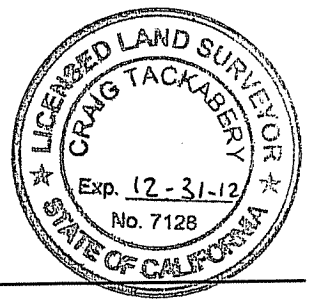
**SURVEYOR'S STATEMENT**

This Corner Record was prepared by me or under my direction in conformance with  
the Land Surveyor's Act on AUGUST 24, 2011  
Signed Lawrence P Doyle P.L.S. or R.C.E. No. P.L.S. 4694

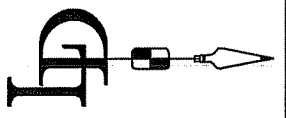
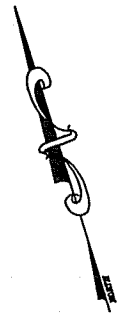
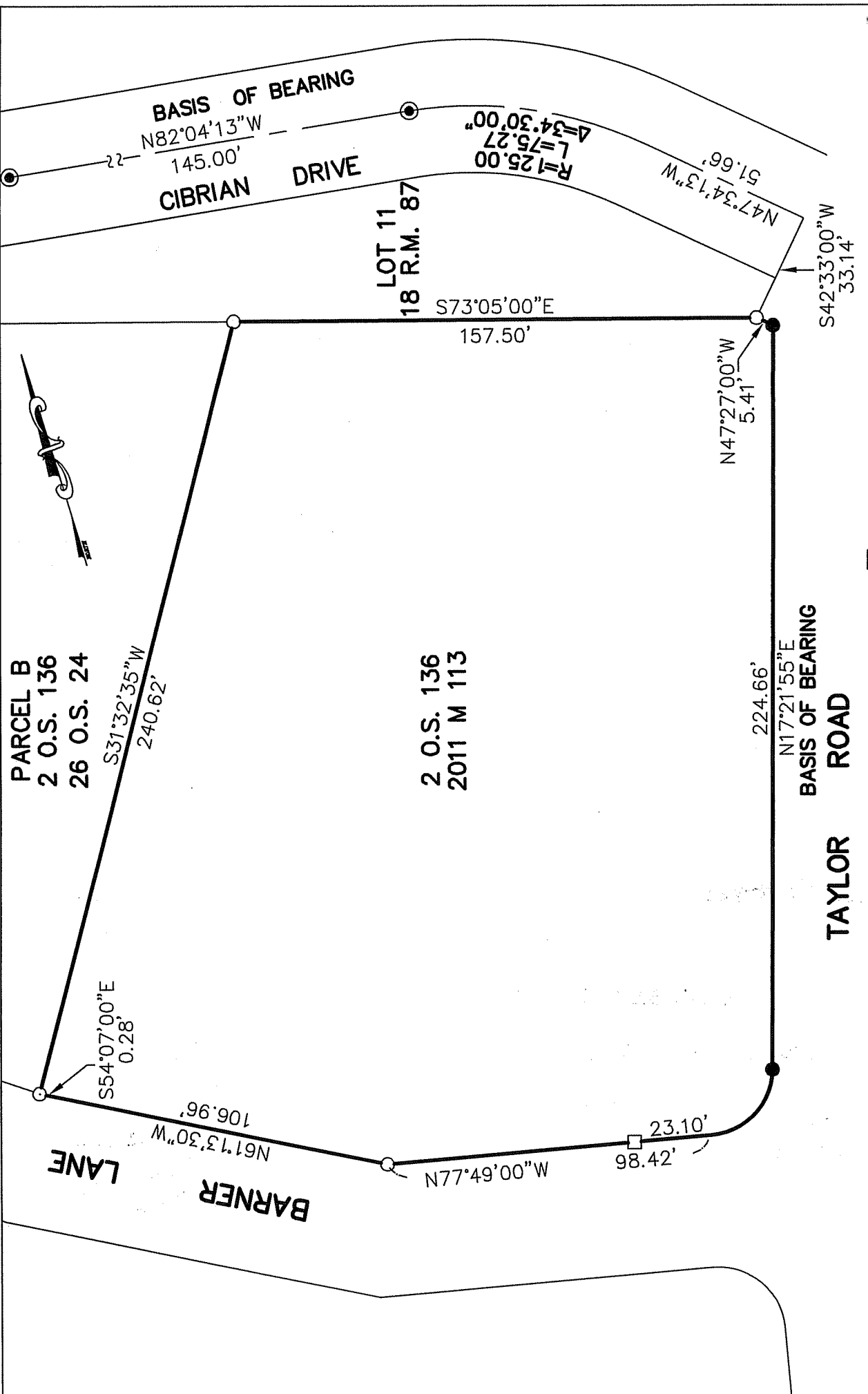


**COUNTY SURVEYOR'S STATEMENT**

This Corner Record was received OCTOBER 17, 2011  
and examined and filed NOVEMBER 1, 2011  
Signed [Signature] P.L.S. or R.C.E. No. 7128  
Title COUNTY SURVEYOR



County Surveyor's Comment \_\_\_\_\_



<b>CORNER RECORD</b> 2011 M 113 MARIN COUNTY CALIFORNIA	
SCALE: 1" = 40' DATE: 8/24/11	DRAWN BY: SHEET 2 OF 2
<b>LAWRENCE P. DOYLE</b> LAND SURVEYOR/CIVIL ENGINEER 100 HELENS LANE MILL VALLEY CA 94941 (415-388-9585)	
DRAWING NO. 2074	

- LEGEND**
- FOUND STREET MONUMENT
  - FOUND 3/4" PIPE/PLUG L.S. 4694
  - SET 3/4" PIPE/PLUG L.S. 4694
  - SET HUB/TACK