

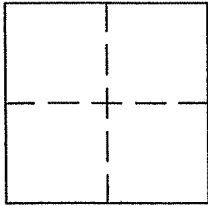
CORNER RECORD

Document Number APN 038-061-29 & 18

City of CORTE MADERA

County of MARIN, California

Brief Legal Description PARCEL 1, 12 PM 1, PORTIONS OF LOTS 34 & 35, 5 RM 77



CORNER TYPE

Government Corner  Control   
Meander  Property   
Rancho  Other   
Date of Survey 01-11-10

COORDINATES (Optional)

N. \_\_\_\_\_  
E. \_\_\_\_\_  
Zone \_\_\_\_\_ NAD27  NAD83   
NAD83 Epoch \_\_\_\_\_  
Elev. \_\_\_\_\_  
Vert. Datum: NGVD29  NAVD88   
Meas. Units: Metric  Imperial

Corner - Left as found  Found and tagged  Established  Reestablished  Rebuilt

Identification and type of corner found: Evidence used to identify or procedure used to establish or reestablish the corner:

FOUND NAIL & TAG, NAIL IN ROCK, AND CAP AS SHOWN ON 12 PM 1, UNREC. SURVEY BY RHODES & GARDNER, AND UNKNOWN SURVEY BY GRIPPI AS SHOWN ON REVERSE.

A description of the physical condition of the monument as found and as set or reset:

SET 3/4" IP'S, TAGGED PLS 5296 AND REBAR & CAP TAGGED PLS 5296 AS SHOWN ON REVERSE.

SURVEYOR'S STATEMENT

This Corner record was prepared by me or under my direction in conformance with the Land Surveyor's Act on JANUARY 23, 2010

Signed [Signature] P.L.S. or R.C.E. No. PLS 5296

COUNTY SURVEYOR'S STATEMENT

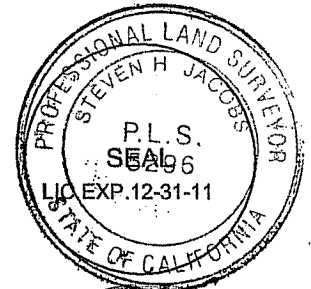
This Corner Record was received FEBRUARY 12, 2010

and examined and filed MARCH 17, 2010

Signed [Signature] P.L.S. or R.C.E. No. 7128

Title \_\_\_\_\_

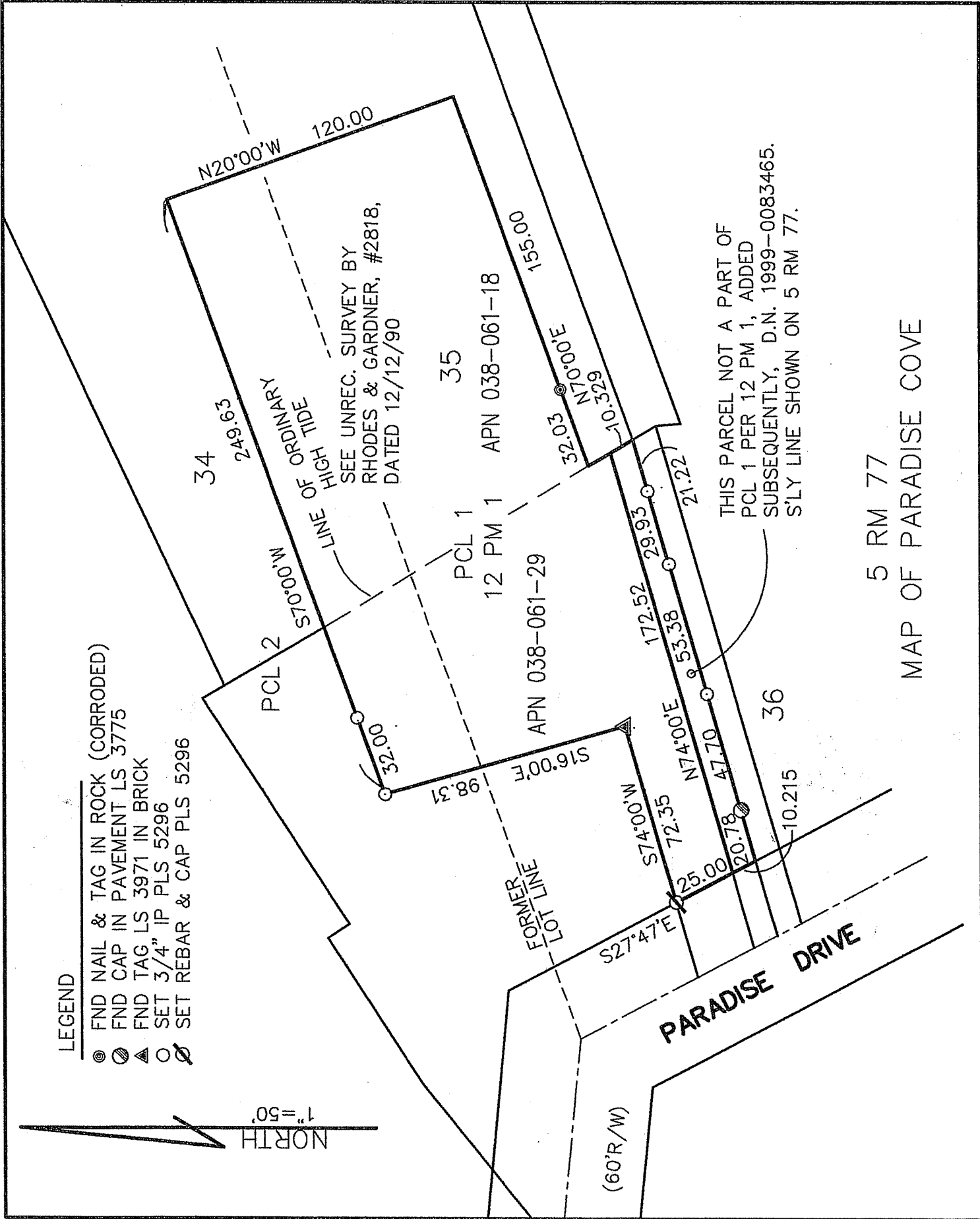
County Surveyor's Comment \_\_\_\_\_



LEGEND

- ⊙ FND NAIL & TAG IN ROCK (CORRODED)
- ⊗ FND CAP IN PAVEMENT LS 3775
- ▲ FND TAG LS 3971 IN BRICK
- SET 3/4" IP PLS 5296
- ⊘ SET REBAR & CAP PLS 5296

NORTH  
1"=50'



5 RM 77  
MAP OF PARADISE COVE