

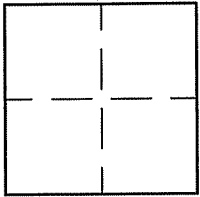
CORNER RECORD

Document Number A.P. 038-051-10

City of TIBURON

County of MARIN, California

Brief Legal Description LANDS OF HANSON PER 2006 M 266



CORNER TYPE COORDINATES (Optional)

Government Corner Control

Meander Property

Rancho Other

Date of Survey 9/28/10

N. _____
 E. _____
 Zone _____ NAD27 NAD83
 NAD83 Epoch _____
 Elev. _____
 Vert. Datum: NGVD29 NAVD88
 Meas. Units: Metric Imperial

Corner- Left as found Found and tagged Established Reestablished Rebuilt

Identification and type of corner found: Evidence used to identify or procedure used to establish or reestablish the corner:
REESTABLISHED THE NORTHWESTERLY LINE OF LANDS OF HANSON USING TWO FOUND POINTS ON PARADISE
DRIVE PER 1999 M 238 AND 2006 M 266 AND AS SHOWN ON SHEET 2.

A description of the physical condition of the monument as found and as set or reset: SEE SHEET 2.

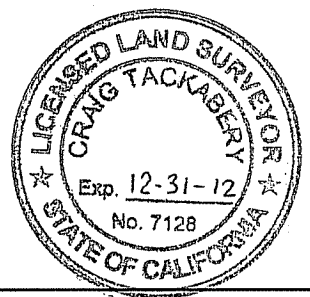
SURVEYOR'S STATEMENT

This Corner Record was prepared by me or under my direction in conformance with
 the Land Surveyor's Act on SEPTEMBER 28, 2010.
 Signed Lawrence P Doyle P.L.S. or R.C.E. No. P.L.S. 4694



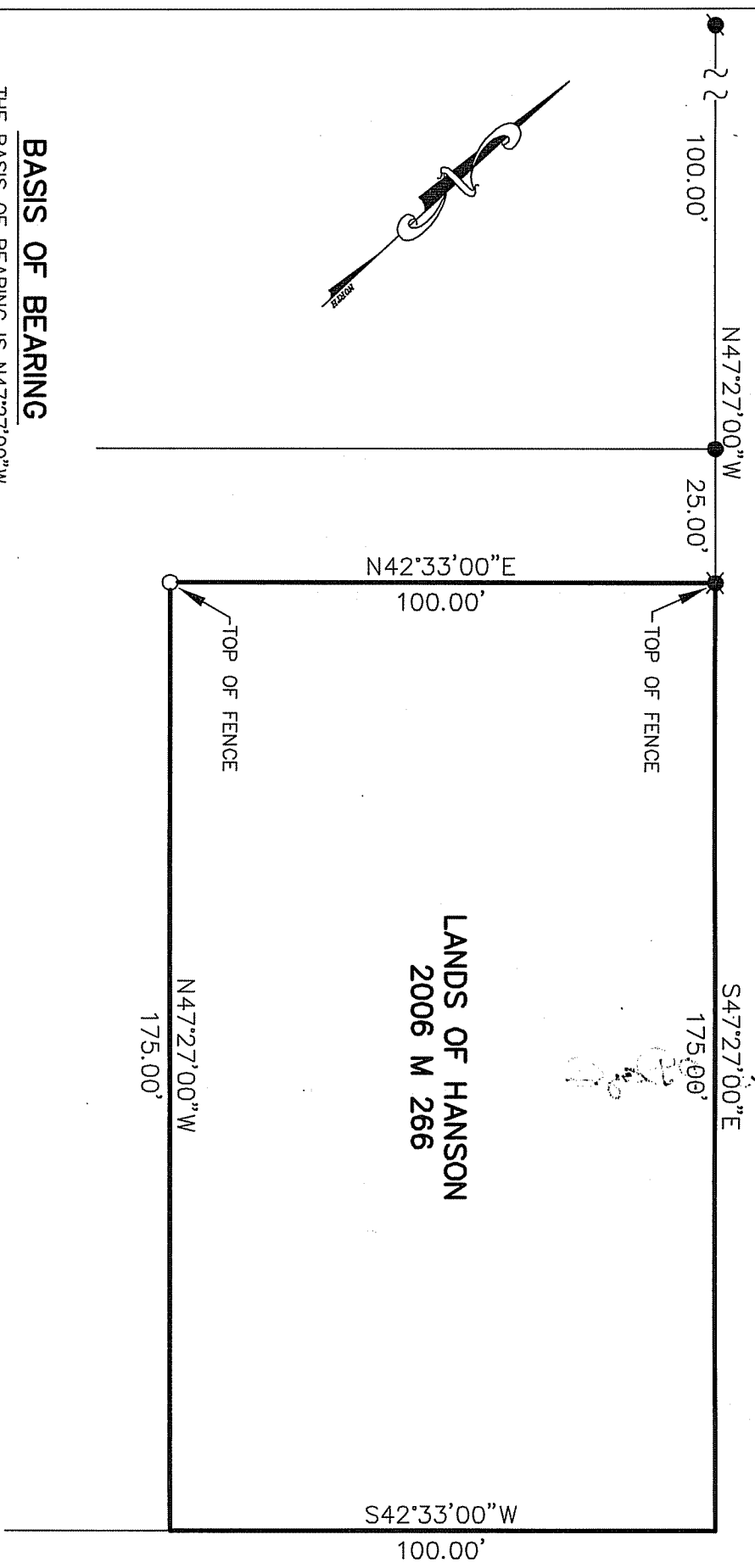
COUNTY SURVEYOR'S STATEMENT

This Corner Record was received DECEMBER 8, 2010
 and examined and filed JANUARY 6, 2011
 Signed [Signature] P.L.S. or R.C.E. No. 7128
 Title COUNTY SURVEYOR



County Surveyor's Comment _____

PARADISE DRIVE



LANDS OF HANSON
2006 M 266

BASIS OF BEARING

THE BASIS OF BEARING IS N47°27'00\"/>

LEGEND

- FOUND PIPE/TAG L.S. 5296 PER 1999 M 238
- FOUND NAIL/TAG L.S. 5296 PER 1999 M 238
- FOUND NAIL/TAG L.S. 6784 PER 2006 M 266
- SET NAIL/TAG L.S. 4694



CORNER RECORD	
LANDS OF HANSON / 2006 M 266	
MARIN COUNTY CALIFORNIA	
SCALE: 1" = 30'	DRAWN BY:
DATE: 9/28/10	SHEET 2 OF 2
LAWRENCE P. DOYLE	
LAND SURVEYOR/CIVIL ENGINEER	
100 HELENS LANE MILL VALLEY CA 94941 (415-388-9585)	
DRAWING NO.	2053