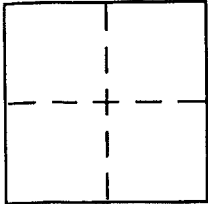


**CORNER RECORD**

Document Number 038-021-04  
County of Marin, California

City of Tiburon  
Brief Legal Description Parcel B, 18 PM84



**CORNER TYPE**

Government Corner  Control   
Meander  Property   
Rancho  Other   
Date of Survey 03-07-05

**COORDINATES (Optional)**

N. \_\_\_\_\_  
E. \_\_\_\_\_  
Zone \_\_\_\_\_ NAD27  NAD83   
NAD83 Epoch \_\_\_\_\_  
Elev. \_\_\_\_\_  
Vert. Datum: NGVD29  NAVD88   
Meas. Units: Metric  Imperial

Corner - Left as found  Found and tagged  Established  Reestablished  Rebuilt

Identification and type of corner found: Evidence used to identify or procedure used to establish or reestablish the corner:  
See Page 2 of 2

A description of the physical condition of the monument as found and as set or reset:  
See Page 2 of 2

**SURVEYOR'S STATEMENT**

This Corner Record was prepared by me or under my direction in conformance with the Land Surveyor's Act on 5/13/05

Signed [Signature] P.L.S or R.C.E. No. 6784

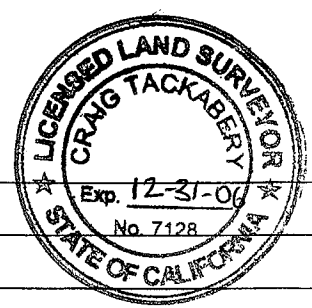
**COUNTY SURVEYOR'S STATEMENT**

This Corner Record was received 5/16/05  
and examined and filed 5/18/05

Signed [Signature] P.L.S or R.C.E. No. 7128

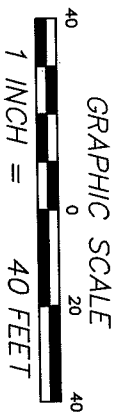
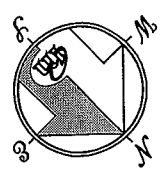
Title COUNTY SURVEYOR

County Surveyor's Comment \_\_\_\_\_



**REFERENCE**

[A] "PARCEL MAP OF LOT LINE ADJUSTMENT..." FILED 9 JANUARY 1981 IN BOOK 18 OF PARCEL MAPS, AT PAGE 84, MARIN COUNTY RECORDS.  
 [B] RECORD OF SURVEY, LOT LINE ADJUSTMENT, FILED 15 DECEMBER 1986 IN BOOK 22 OF SURVEYS AT PAGE 28, MCR.



**BASIS OF BEARING**

THE BEARING S 37°30'58" W BETWEEN FOUND MONUMENTS AS SHOWN UPON MAP ABOVE  
 -REFERENCE [B], ALL BEARINGS HEREIN MENTIONED ARE RELATED THERETO.

**LEGEND**

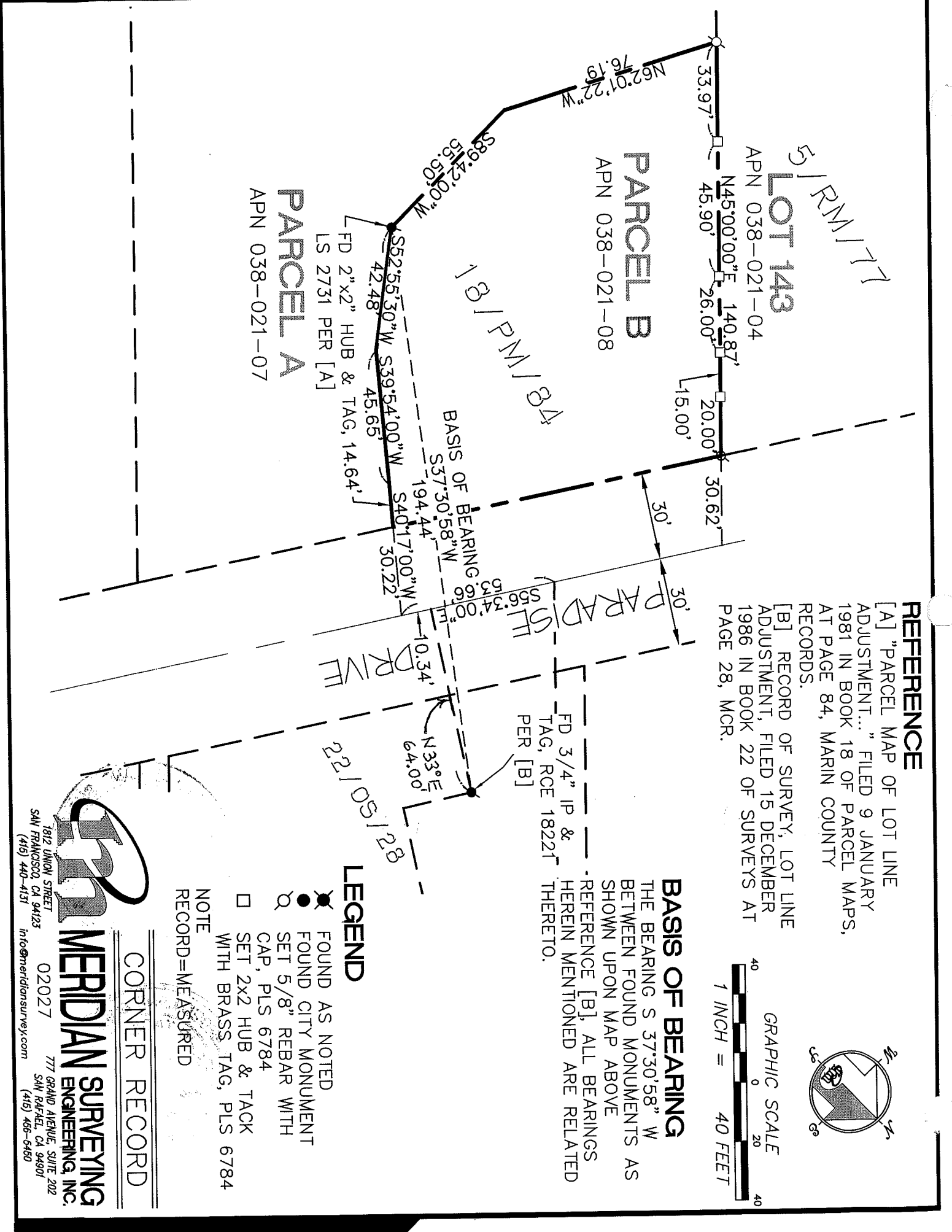
- FOUND AS NOTED
  - FOUND CITY MONUMENT
  - SET 5/8" REBAR WITH CAP, PLS 6784
  - SET 2x2 HUB & TACK WITH BRASS TAG, PLS 6784
- NOTE  
 RECORD=MEASURED

CORNER RECORD



**MERIDIAN SURVEYING ENGINEERING, INC.**

1812 UNION STREET SAN FRANCISCO, CA 94123 (415) 440-4131  
 777 GRAND AVENUE, SUITE 202 SAN RAFAEL, CA 94901 (415) 455-5450  
 02027 info@meridiansurvey.com



51 RM 177  
**LOT 143**  
 APN 038-021-04

**PARCEL B**  
 APN 038-021-08

**PARCEL A**  
 APN 038-021-07

BASIS OF BEARING  
 S37°30'58" W

FD 2"x2" HUB & TAG, 14.64'  
 LS 2731 PER [A]

FD 3/4" IP & TAG, RCE 18221 PER [B]