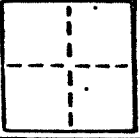


CORNER RECORD

COUNTY OF MARIN V. \_\_\_\_\_ E. \_\_\_\_\_ MERIDIAN CALIFORNIA  
CORNER TYPE: GOVT. CORNER  MEANDER  RANCHO  CONTROL  OTHER   
CORNER IDENTIFICATION - DATE OF VISIT \_\_\_\_\_ 19\_\_\_\_



CORNER - LEFT AS FOUND  FOUND AND TAGGED  REESTABLISHED OBLITERATED CORNER  REBUILT

PHYSICAL DESCRIPTION OF CORNER FOUND; EVIDENCE AND METHOD USED TO IDENTIFY OR REESTABLISH

AP. 038-011-42

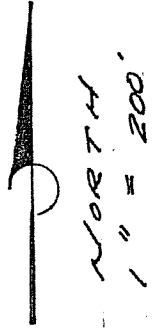
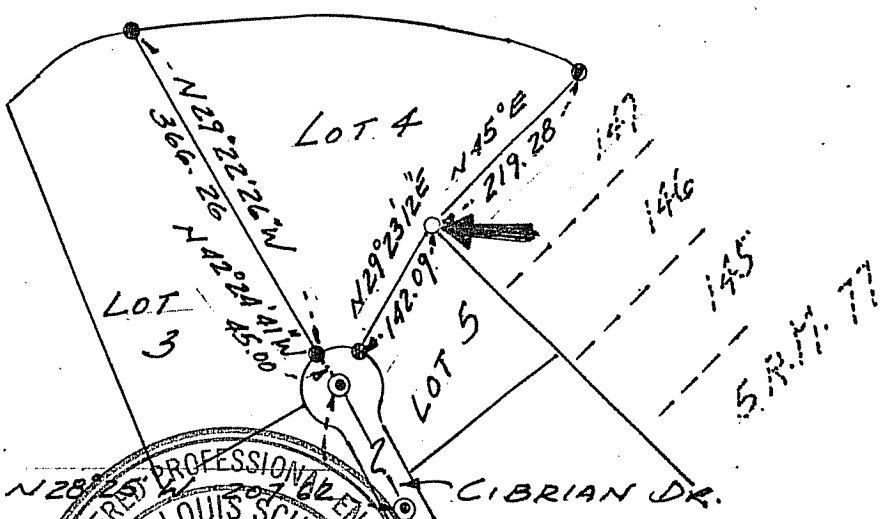
PHYSICAL DESCRIPTION OF MONUMENTS REBUILT OR PERPETUATED

SET 3/4" IRON PIPE W/ TAG R.C.E. 18221,  
FOR THE NORTH CORNER OF LOT 5 AND  
AN ANGLE POINT IN THE S.E. LINE OF  
LOT 4, 19 R.M. 34. TIBURON

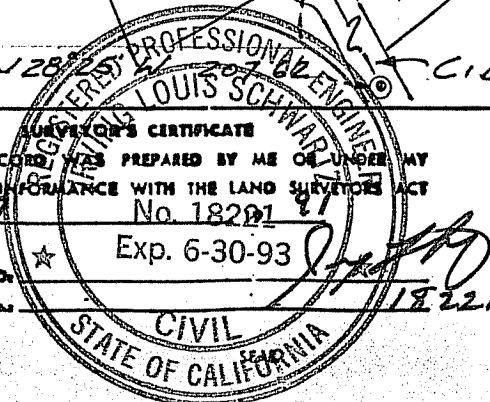
CALIFORNIA COORDINATE SYSTEM ORDER: FIRST  SECOND  THIRD   
STATIONS USED: NGS (USC & GS)  STATE  COUNTY  OTHER  STATION \_\_\_\_\_ STATION \_\_\_\_\_  
ZONE \_\_\_\_\_ ELEVATION \_\_\_\_\_ NORTHINGS (Y) \_\_\_\_\_ EASTINGS (X) \_\_\_\_\_

SKETCH: (Include reference tie or witness points, remarks and topo of area)

PARADISE DRIVE



LEGEND  
● FND. 3/4" IP. LS 3971.  
⊙ FND. STD. ST. MON.  
○ SET 3/4" I.P. TAGGED LS. 3971.



THIS CORNER RECORD WAS PREPARED BY ME OR UNDER MY DIRECTION IN COMPLIANCE WITH THE LAND SURVEYOR ACT ON S-7 No. 18201  
SIGNED: \_\_\_\_\_ 18221  
L.S. or R.C.E. No. \_\_\_\_\_

COUNTY SURVEYOR'S CERTIFICATE  
THE CORNER RECORD WAS RECEIVED, EXAMINED AND FILED \_\_\_\_\_ 19\_\_\_\_  
BY: \_\_\_\_\_ C 30212  
TITLE: \_\_\_\_\_ Exp. 3-31-92  
DOCUMENT No. \_\_\_\_\_  
STATEMENT ON BACK OF SHEET

