

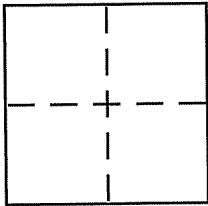
CORNER RECORD

Document Number APN 34-430-02

City of MILL VALLEY

County of MARIN, California

Brief Legal Description LOT 2, PARCEL MAP 25 P.M. 92, MARIN COUNTY RECORDS



CORNER TYPE

- Government Corner Control
- Meander Property
- Rancho Other
- Date of Survey _____

COORDINATES (Optional)

N. _____
 E. _____
 Zone _____ NAD27 NAD83
 NAD83 Epoch _____
 Elev. _____
 Vert. Datum: NGVD29 NAVD88
 Meas. Units: Metric Imperial

Corner - Left as found Found and tagged Established Reestablished Rebuilt

Identification and type of corner found: Evidence used to identify or procedure used to establish or reestablish the corner:

FOUND MONUMENTS PER 25 P.M. 92 WERE FOUND IN RECORD POSITIONS. RECORD BEARINGS AND DISTANCES WERE USED TO REESTABLISH THE LOCATION OF THE MISSING CORNERS

A description of the physical condition of the monument as found and as set or reset:

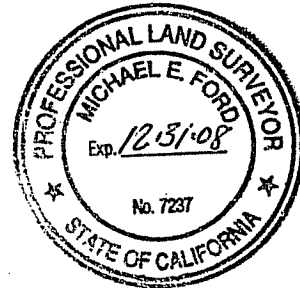
1/2" IRON PIPES TAGGED FOR LS7237

SURVEYOR'S STATEMENT

This Corner Record was prepared by me or under my direction in conformance with

the Land Surveyor's Act on MARCH 10 2008

Signed Michael E. Ford P.L.S. or R.C.E. No. 7237



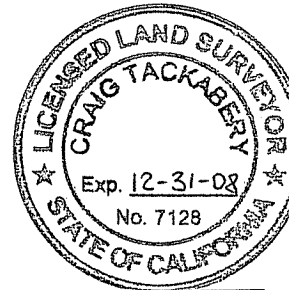
COUNTY SURVEYOR'S STATEMENT

This Corner Record was received MARCH 21, 2008

and examined and filed APRIL 30, 2008

Signed [Signature] P.L.S. or R.C.E. No. 7128

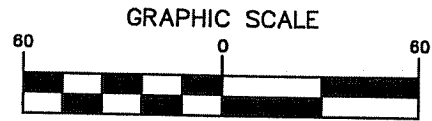
Title COUNTY SURVEYOR



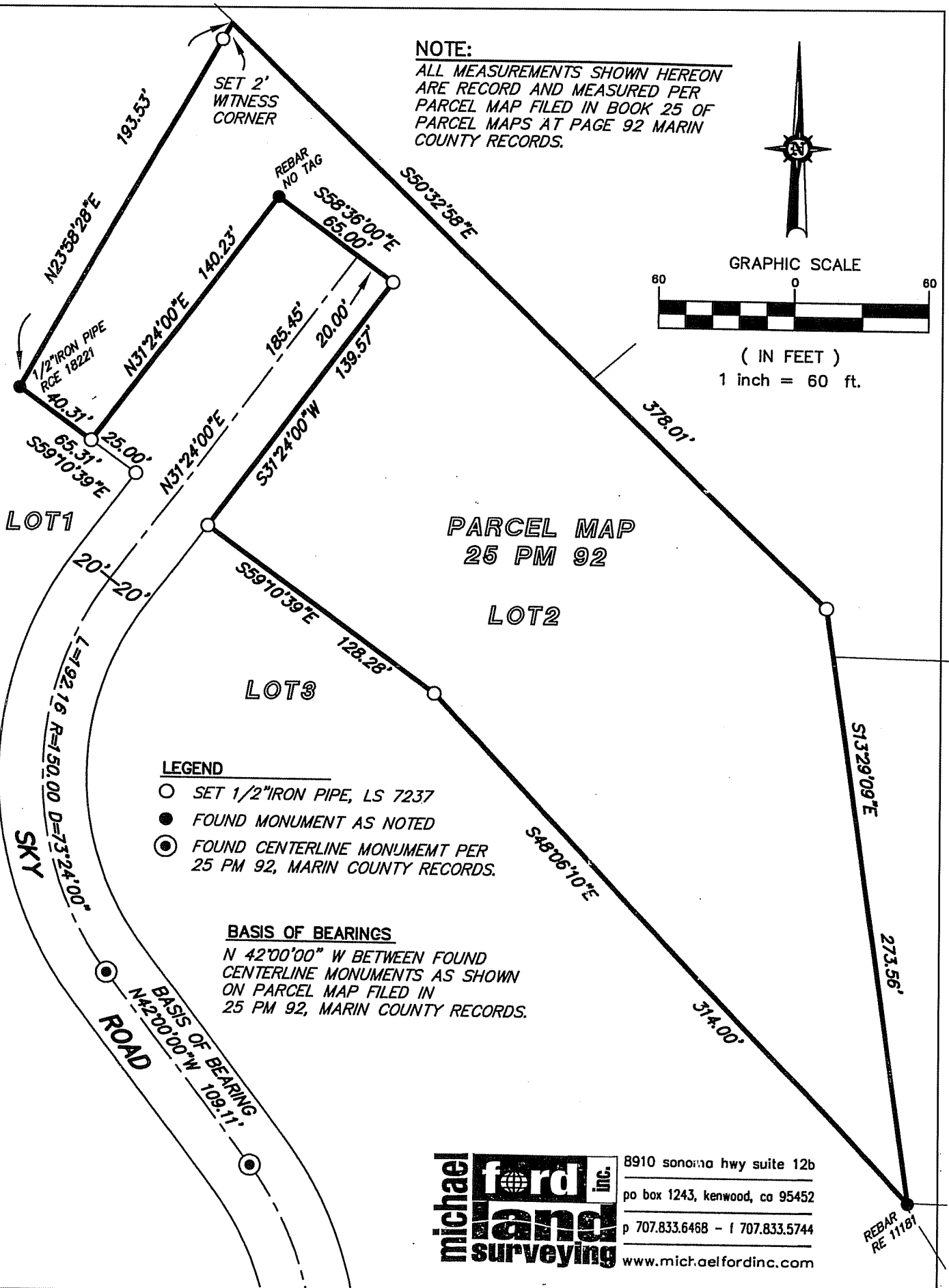
County Surveyor's Comment _____

NOTE:

ALL MEASUREMENTS SHOWN HEREON ARE RECORD AND MEASURED PER PARCEL MAP FILED IN BOOK 25 OF PARCEL MAPS AT PAGE 92 MARIN COUNTY RECORDS.



(IN FEET)
1 inch = 60 ft.



PARCEL MAP
25 PM 92

LOT2

LOT3

LEGEND

- SET 1/2" IRON PIPE, LS 7237
- FOUND MONUMENT AS NOTED
- ⊙ FOUND CENTERLINE MONUMENT PER 25 PM 92, MARIN COUNTY RECORDS.

BASIS OF BEARINGS

N 42°00'00" W BETWEEN FOUND CENTERLINE MONUMENTS AS SHOWN ON PARCEL MAP FILED IN 25 PM 92, MARIN COUNTY RECORDS.

michael ford inc.
land surveying

8910 sonoma hwy suite 12b
po box 1243, kenwood, ca 95452
p 707.833.6468 - f 707.833.5744
www.michaelfordinc.com