

CORNER RECORD

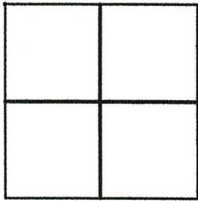
Agency Index CR23-078

Document Number 034-420-43

City of Corte Madera

County of MARIN, California

Brief Legal Description Lot 121, 2001 MAPS 63; I.N. 2015-043440



CORNER TYPE

Government Corner Control
Meander Property
Rancho Other

Date of Survey 08/02/2023

COORDINATES (Optional)

N. _____ E. _____

Elevation _____

Units Metric U.S. Survey Foot

Horizontal Datum _____

Zone _____ Epoch Date _____

Vertical Datum _____

Complies with Public Resources Code §§8801-8819

Complies with Public Resources Code §§8890-8902

PLS Act Ref: 8765(d) 8771 8773 Other:

Corner/Monument: Left as found Established Rebuilt Pre-Construction
 Found and tagged Reestablished Referenced Post-Construction

Narrative of corner identified and monument as found, set, reset, replaced, or removed:

See sheet #2 for description (s):

SURVEYOR'S STATEMENT

This Corner Record was prepared by me or under my direction in conformance with the Professional Land Surveyors' Act on August 31, 2023

Signed [Signature] P.L.S. or R.C.E. No. 6649



COUNTY SURVEYOR'S STATEMENT

This Corner Record was received September 05, 2023

and examined and filed September 13, 2023

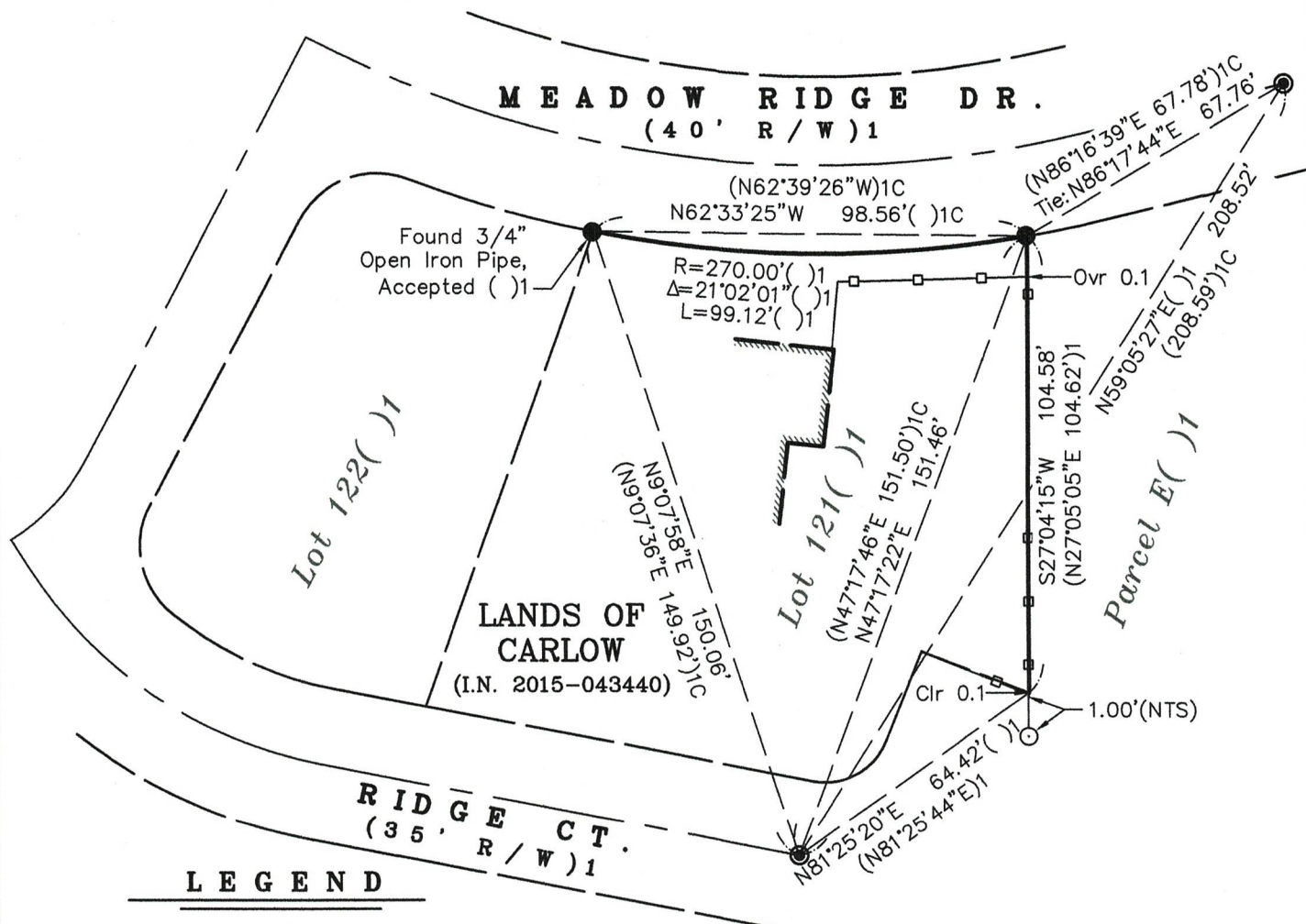
Signed T.W. Park P.L.S. [Redacted] No. 8176

Title County Surveyor



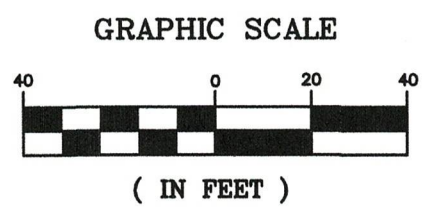
County Surveyor's Comment _____

All distances shown are in feet and decimals thereof



LEGEND

- Found 3/4" Iron Pipe & Plastic Plug, Stamped "RCE 18221" () 1 Unless Otherwise Noted
- ⊙ Found 2" Brass Disc with Punch Mark in Monument Well Casing, 0.5' Down
- ⊙ Set 5/8" Rebar & 2-1/2" Punched Aluminum Cap, Stamped "LA STEVENS PLS 6649"
- Wood Fence
- () 1 2001 MAPS 63
- NTS Not To Scale



**CORNER RECORD
LANDS OF CARLOW**

(LOT 121, 2001 MAPS 63)
CORTE MADERA
MARIN COUNTY CALIFORNIA
SCALE: 1" = 40' AUGUST, 2023
L.A. Stevens & Associates, Inc.
Professional Land Surveyors * (415) 382-7713
7 Commercial Blvd., Suite 1 * Novato, CA 94949
Job # 232316

Lawrence A. Stevens, PLS 6649
Copyright © Lawrence A. Stevens 2023