

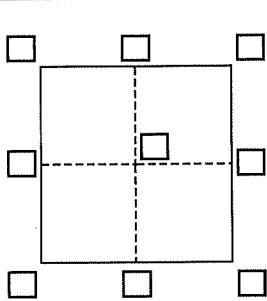
CORNER RECORD

Agency Index DPW # 19-087

Document Number APN 034-420-41 ADJ

City of CORTE MADERA County of MARIN, California

Brief Legal Description MONUMENT IN FRONT OF LOT 120 PER 21 RM 8



CORNER TYPE

- Government Corner Control
 Meander Property
 Rancho Other

Date of Survey April 8, 2019

COORDINATES (Optional)

- N. _____ E. _____
 Elevation _____
 Units Metric U.S. Survey Foot
 Horizontal Datum _____
 Zone _____ Epoch Date _____
 Vertical Datum _____
 Complies with Public Resources Code §§8801-8819
 Complies with Public Resources Code §§8890-8902

- PLS Act Ref.: 8765(d) 8771 8773 Other:
 Corner/Monument: Left as found Established Rebuilt Pre-Construction
 Found and tagged Reestablished Referenced Post-Construction

Narrative of corner identified and monument as found, set, reset, replaced, or removed:

See sheet #2 for description(s):

SURVEYOR'S STATEMENT

This Corner Record was prepared by me or under my direction in conformance with

the Professional Land Surveyors' Act on 9/20/19

Signed [Signature] P.L.S. or R.C.E. No. 9387



COUNTY SURVEYOR'S STATEMENT

This Corner Record was received July 23, 2019

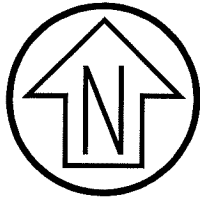
and examined and filed OCT. 07, 2019

Signed [Signature] P.L.S. or R.C.E. No. 9292

Title DEPUTY C.S.

County Surveyor's Comment





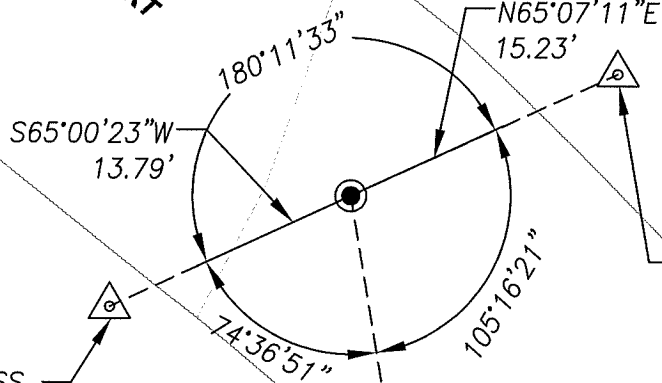
Graphic Scale (in feet)



1 inch = 10 ft.

LOT 121
(21 RM 8)
APN 034-420-43

RIDGE COURT



SET NAIL & BRASS
TAG PLS 9387

SET NAIL & BRASS
TAG PLS 9387

LOT 120
(21 RM 8)
APN 034-420-41

SET NAIL & BRASS
TAG PLS 9387

LEGEND

- BOUNDARY
- TIE TO PRE-CONSTRUCTION REFERENCE POINT
- SET NAIL & BRASS TAG PLS 9387
- STREET MONUMENT PER 21 RM 08

CSW ST 2

CSW/Stuber-Stroeh Engineering Group, Inc.

Civil & Structural Engineers | Surveying & Mapping | Environmental Planning
Land Planning | Construction Management

45 Leveroni Court
Novato, CA 94949

tel: 415.883.9850
fax: 415.883.9835

<http://www.cswst2.com>

© 2019

Rev. X

Date: 09/20/19

Job No. 2019-20-028

Scale: 1" = 10'

**MONUMENT PRESERVATION
CORNER RECORD**

RIDGE COURT

CORTE MADERA

MARIN

CALIFORNIA