

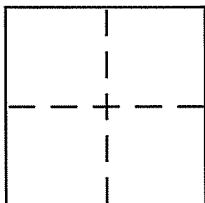
CORNER RECORD

Document Number APN 34-394-10

City of TIBURON

County of MARIN, California

Brief Legal Description ALL CORNERS OF LOT 30 ON MAP OF CYPRESS HOLLOW, BK. 20 OF MAPS, PG. 96, M.C.R.



CORNER TYPE

Government Corner Control
 Meander Property
 Rancho Other
 Date of Survey JUNE 13, 2007

COORDINATES (Optional)

N. _____
 E. _____
 Zone _____ NAD27 NAD83
 NAD83 Epoch _____
 Elev. _____
 Vert. Datum: NGVD29 NAVD88
 Meas. Units: Metric Imperial

Corner - Left as found Found and tagged Established Reestablished Rebuilt

Identification and type of corner found: Evidence used to identify or procedure used to establish or reestablish the corner:

FOUND MONUMENTS AS SHOWN ON THAT MAP OF CYPRESS HOLLOW, BK. 20 OF MAPS, PG. 96, M.C.R. AND AS SHOWN ON SHEET 2. MONUMENTS FOUND IN RECORD POSITION, HELD RECORD BEARINGS AND DISTANCES TO REESTABLISH LOT 30. SET 1.0 WITNESS CORNER @ MOST SOUTHERLY POINT OF LOT 30, DUE TO OBSTACLES (See Sheet 2)

A description of the physical condition of the monument as found and as set or reset: ALL MONUMENTS AS SHOWN ON SHEET 2 WERE IN EXCELLENT CONDITION, ALL MONUMENTS SET ON SHEET 2 ARE 1/2" IRON PIPES TAGGED L.S. 3890. MONUMENTS WERE SET AFTER DILLIGENT SEARCH WAS MADE AT RECORD POSITION

SURVEYOR'S STATEMENT

This Corner Record was prepared by me or under my direction in conformance with the Land Surveyor's Act on June 28, 2007

Signed Ray C. Carlson P.L.S. or R.C.E. No. 3890



COUNTY SURVEYOR'S STATEMENT

This Corner Record was received JULY 5, 2007

and examined and filed AUGUST 2, 2007

Signed _____ P.L.S. or R.C.E. No. 7128

Title COUNTY SURVEYOR

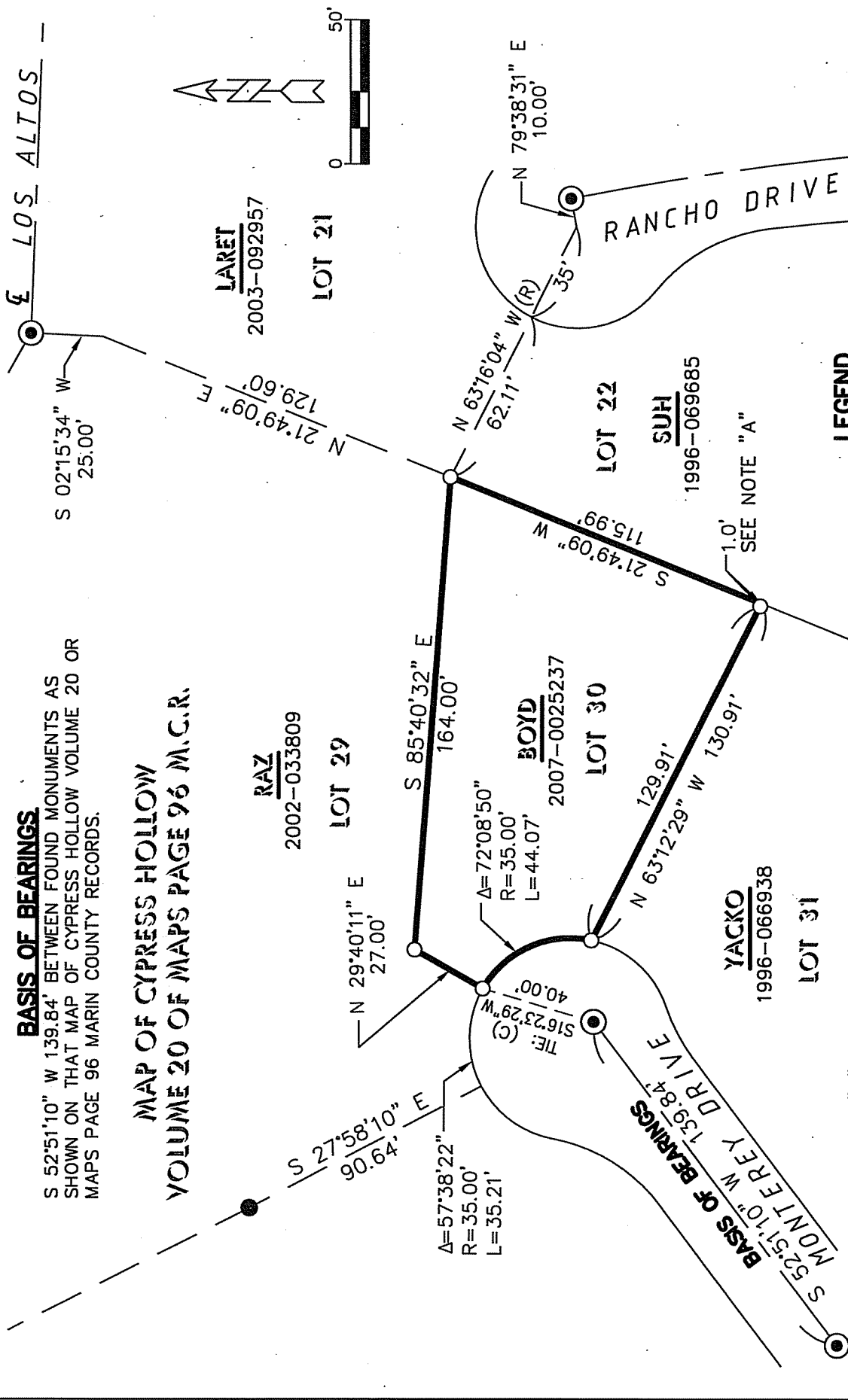


County Surveyor's Comment _____

BASIS OF BEARINGS

S 52°51'10" W 139.84' BETWEEN FOUND MONUMENTS AS SHOWN ON THAT MAP OF CYPRESS HOLLOW VOLUME 20 OR MAPS PAGE 96 MARIN COUNTY RECORDS.

**MAP OF CYPRESS HOLLOW
VOLUME 20 OF MAPS PAGE 96 M.C.R.**



LEGEND

- SET 1/2" IRON PIPE TAGGED LS 3890
- FOUND 3/4" IRON PIPE, RCE 10057
- ⊙ FOUND & WELL MONUMENT
- (R) RADIAL BEARING
- (C) CALCULATED PER VOLUME 20 OF MAPS PAGE 96

NOTE "A": SET 1.0' WITNESS CORNER - ACTUAL CORNER LANDS IN CONCRETE GUTTER. UNABLE TO SET.

NOTE: ALL BEARINGS AND DISTANCES ARE RECORD AND MEASURED PER VOLUME 20 OF MAPS PAGE 96, M.C.R.

Ray Carlson & Associates, Inc.
 LAND SURVEYING
 411 Russell Avenue, Santa Rosa, California 95403
 (707) 528-7849 • Fax (707) 571-5541
 © 2007, Ray Carlson & Associates, Inc.

