

CORNER RECORD

Document Number A.P.# 34-392-03,04

City of TIBURON

County of MARIN, California

Brief Legal Description LOTS 2 & 3 / 20 R.M. 96

CORNER TYPE

Government Corner Control
 Meander Property
 Rancho Other
 Date of Survey 04/17/03

COORDINATES (Optional)

N. _____
 E. _____
 Zone _____ NAD27 NAD83
 NAD83 Epoch _____
 Elev. _____
 Vert. Datum: NGVD29 NAVD88
 Meas. Units: Metric Imperial

Corner- Left as found Found and tagged Established Reestablished Rebuilt

Identification and type of corner found: Evidence used to identify or procedure used to establish or reestablish the corner:

ESTABLISHED THE REAR PROPERTY LINES FROM THE STREET MONUMENTS PER 20 R.M. 96.

SEE SHEET 2.

A description of the physical condition of the monument as found and as set or reset: SEE SHEET 2.

SURVEYOR'S STATEMENT

This Corner Record was prepared by me or under my direction in conformance with

the Land Surveyor's Act on APRIL 17 2003

Signed Lawrence P. Doyle P.L.S. or R.C.E. No. P.L.S. 4694



COUNTY SURVEYOR'S STATEMENT

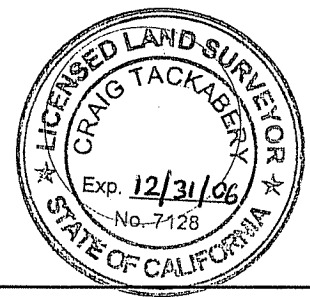
This Corner Record was received MAY 12, 2003

and examined and filed MAY 16, 2003

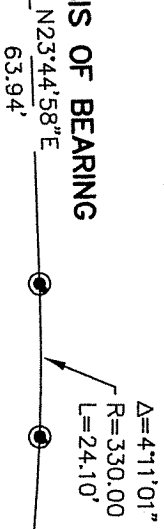
Signed [Signature] P.L.S. or R.C.E. No. 7128

Title County Surveyor

County Surveyor's Comment _____



BASIS OF BEARING



CYPRRESS

HOLLOW

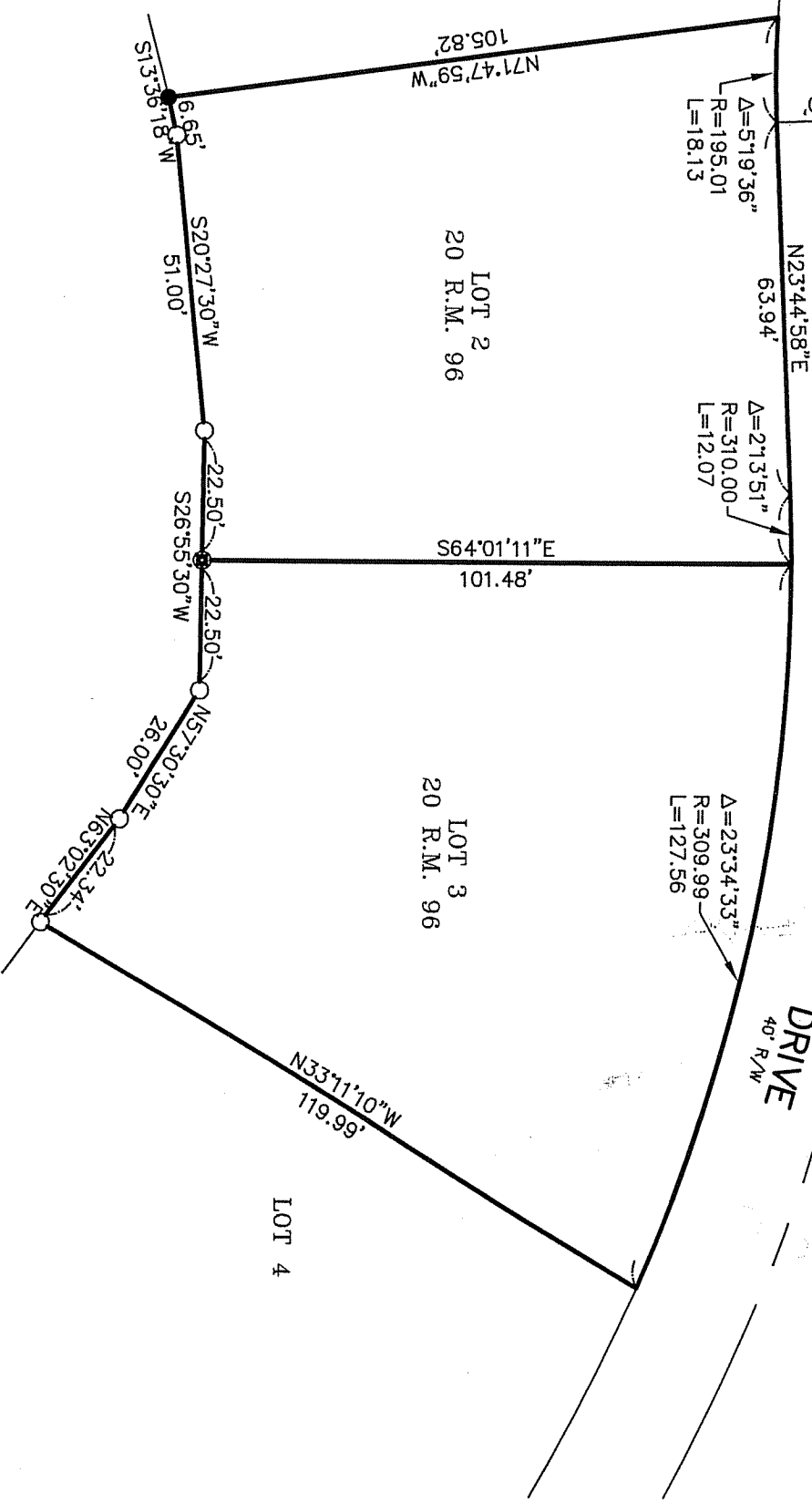
DRIVE
40' R/W

LOT 1

LOT 2
20 R.M. 96

LOT 3
20 R.M. 96

LOT 4



BASIS OF BEARING

THE BASIS OF BEARING FOR THIS SURVEY IS N 23°44'58" E BETWEEN FOUND STREET MONUMENTS PER 20 R.M. 96.

LEGEND

- SET 3/4" PIPE AND PLUG L.S. 4694
- ⊙ SET 3/4" PIPE AND PLUG L.S. 4694 THROUGH ROTTEN HUB
- FOUND SPIKE IN GROUND (NO TAG)
- ⊙ FOUND STREET MONUMENT 20 R.M. 96



CORNER RECORD		CALIFORNIA	
LOT 2 & 3 / 20 R.M. 96			
TIBURON MARIN COUNTY			
SCALE: 1" = 30'	DATE: 4/17/03	DRAWN BY:	
LAWRENCE P. DOYLE		SHEET 2 OF 2	
LAND SURVEYOR/CIVIL ENGINEER			
P.O. BOX 1609 MILL VALLEY CA 94942 (415-388-9585)		DRAWING NO.	
		1092-03	