

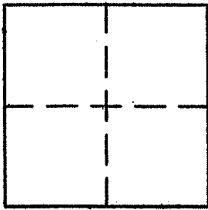
CORNER RECORD

Document Number APN 034-370-03

City of TIBURON

County of Marin, California

Brief Legal Description LOT 31, 20 RM 44



CORNER TYPE

Government Corner Control
Meander Property
Rancho Other
Date of Survey SEPT. 30, 2008

COORDINATES (Optional)

N. _____
E. _____
Zone _____ NAD27 NAD83
NAD83 Epoch _____
Elev. _____
Vert. Datum: NGVD29 NAVD88
Meas. Units: Metric Imperial

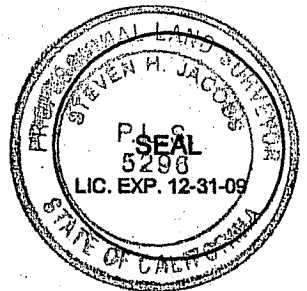
Corner - Left as found Found and tagged Established Reestablished Rebuilt

Identification and type of corner found: Evidence used to identify or procedure used to establish or reestablish the corner:
FND. STD. ST. MON. W/PUNCH AND FND. 3/4" I.P.'S TAGGED RCE 18211 AS SHOWN ON
20 RM 44 AND ON REVERSE.

A description of the physical condition of the monument as found and as set or reset:
SET 2"X2" LINE HUBS W/TAG PLS 5296 AS SHOWN ON REVERSE.

SURVEYOR'S STATEMENT

This Corner record was prepared by me or under my direction in conformance with
the Land Surveyors Act on OCTOBER 24, 2008
Signed [Signature] P.L.S. or R.C.E. No. PLS 5296

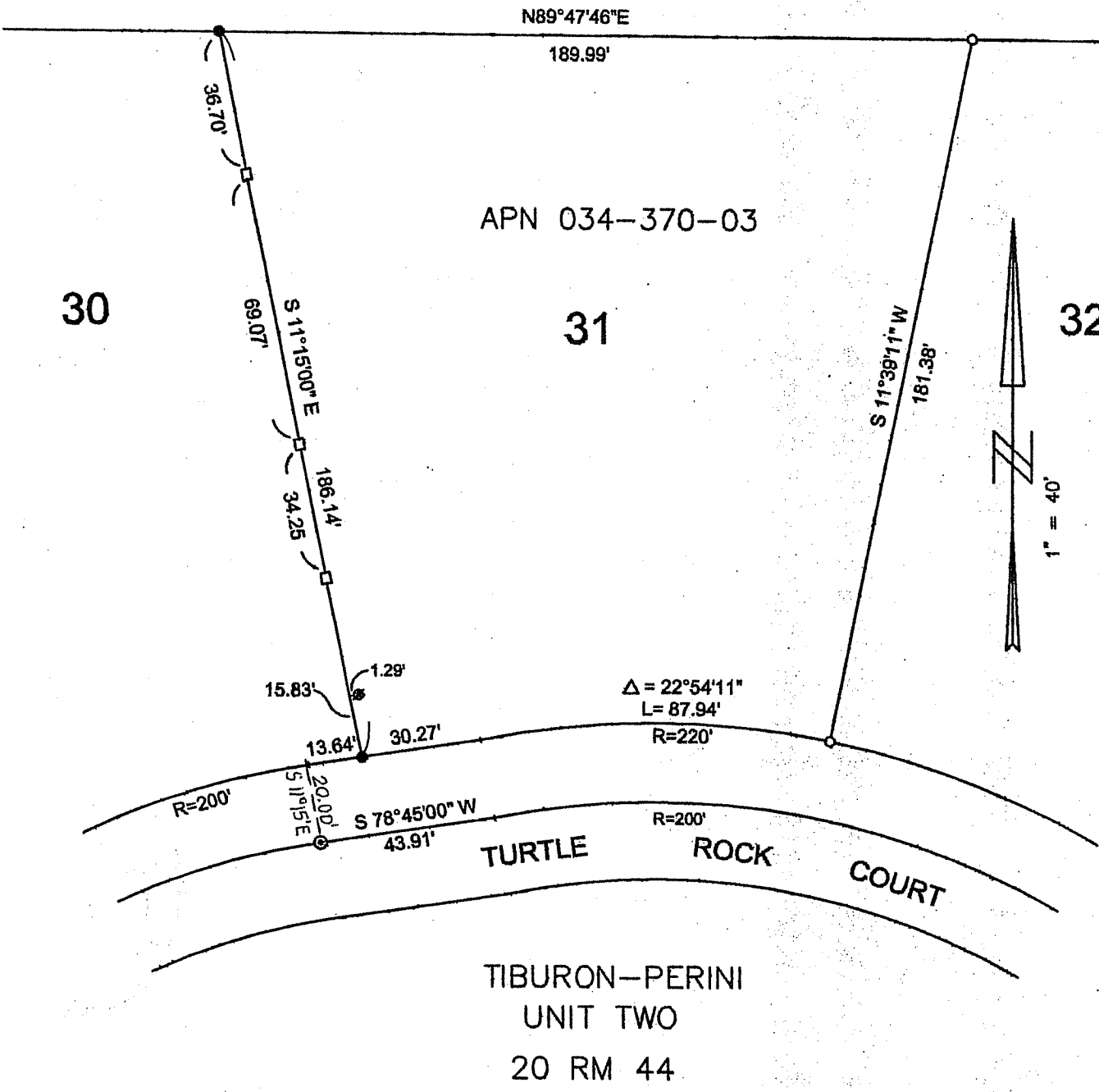


COUNTY SURVEYOR'S STATEMENT

This Corner Record was received NOVEMBER 24, 2008
and examined and filed DECEMBER 17, 2008
Signed [Signature] P.L.S. or R.C.E. No. 7128
Title COUNTY SURVEYOR



County Surveyor's Comment _____



LEGEND

- ⊙ = FND. STD. ST. MON W/PUNCH
- = FND. 3/4" IP & TAG RCE 18221
- ⊗ = FND. 3/4" IP NO TAG
- = SET LINE HUB & TAG PLS 5296