

CORNER RECORD

Agency Index CR24-014

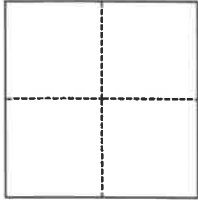
Document Number 034-360-28 (Adj)

City of TIBURON County of MARIN, California

Brief Legal Description FND TWO 2" BRASS DISKS ALONG CENTERLINE OF CECILIA CT(RM20-050)

CORNER TYPE

COORDINATES (Optional)



- Government Corner
- Meander
- Rancho
- Control
- Property
- Other

N. _____ E. _____

Elevation _____

Units Metric U.S. Survey Foot

Horizontal Datum _____

Zone _____ Epoch Date _____

Vertical Datum _____

Complies with Public Resources Code §§8801-8819

Complies with Public Resources Code §§8890-8902

PLS Act Ref.: 8765(d) 8771 8773 Other:

Corner/Monument: Left as found Established Rebuilt Pre-Construction

Found and tagged Reestablished Referenced Post-Construction

Narrative of corner identified and monument as found, set, reset, replaced, or removed:

See sheet #2 for description(s):

FOUND TWO 2" BRASS DISKS STAMPED RCE 27577 IN MONUMENT WELLS ALONG CECILIA COURT CENTERLINE AS SHOWN ON THAT MAP ENTITLED MAP OF TIBURON HIGHLANDS FILED IN BOOK 20 AT PAGE 50. SET SEVEN RIVETS & BRASS TAGS STAMPED PLS 8614 AS REFERENCE POINTS (SEE PAGE 2). THE PURPOSE OF SETTING REFERENCE BRASS TAGS IS TO PRESERVE THE RECORD LOCATION OF FOUND BRASS DISK PRIOR TO ROADWAY CONSTRUCTION.

SURVEYOR'S STATEMENT

This Corner Record was prepared by me or under my direction in conformance with

the Professional Land Surveyors' Act on

Signed

(P.L.S.) or R.G.E. No.

8614



COUNTY SURVEYOR'S STATEMENT

This Corner Record was received February 01, 2024

and examined and filed February 05, 2024

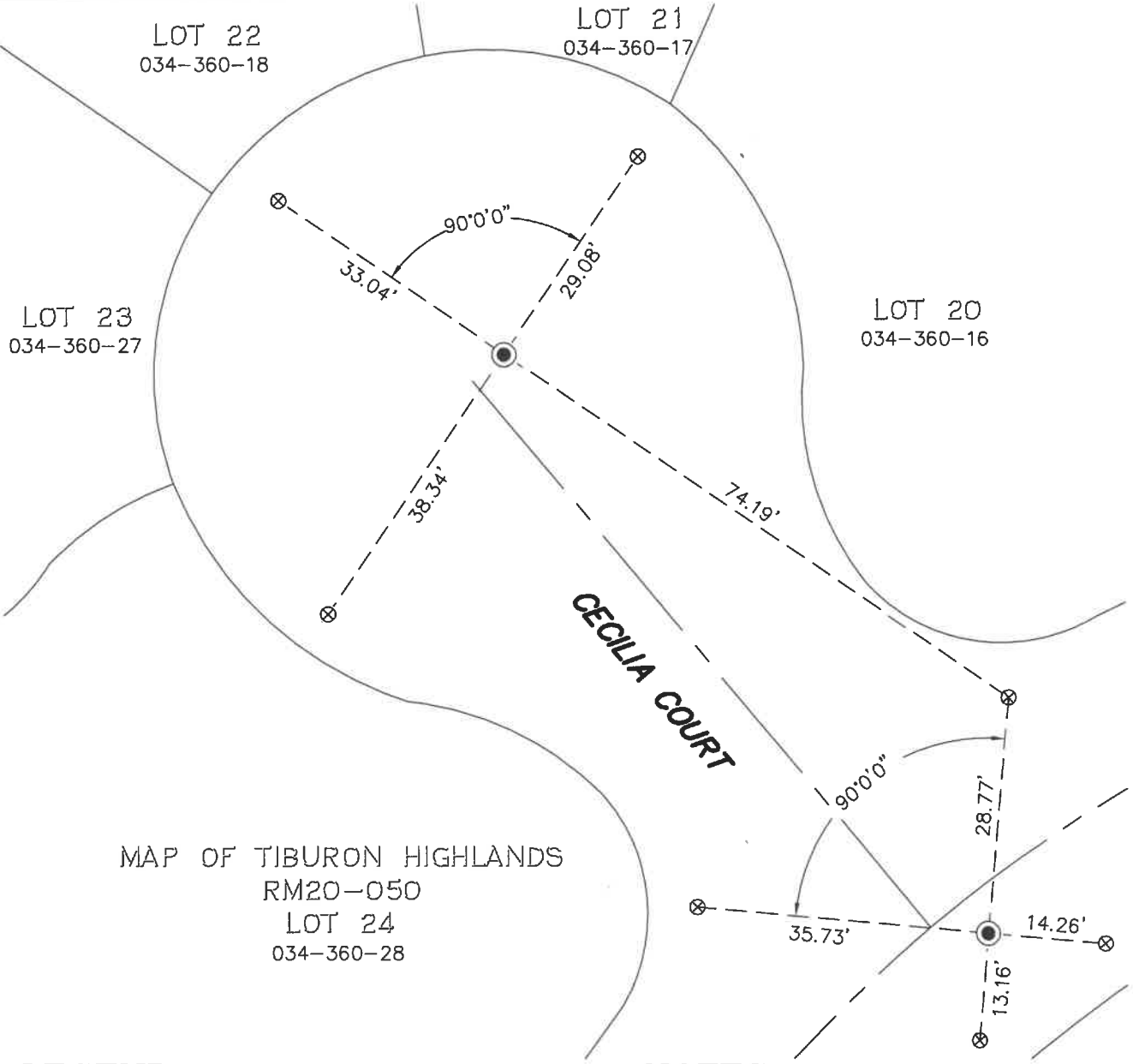
Signed

P.L.S. [REDACTED] No. 8176

Title County Surveyor

County Surveyor's Comment





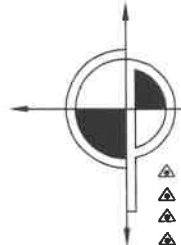
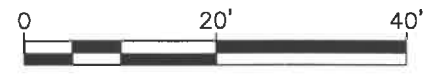
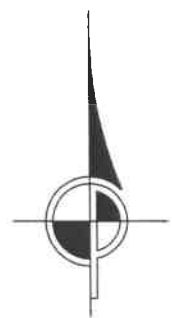
MAP OF TIBURON HIGHLANDS
 RM20-050
 LOT 24
 034-360-28

LEGEND

- ROADWAY CENTERLINE
- ADJACENT PROPERTY BOUNDARY
- - - - SURVEY TIE
- FOUND 2" BRASS DISK STAMPED RCE 27577 IN MONUMENT WELL.
- ⊗ SET RIVET AND BRASS TAG STAMPED PLS 8614 ON TOP OF CONCRETE CURB

NOTES

ALL DISTANCES AND DIMENSIONS ARE IN FEET AND DECIMALS THEREOF.
 ALL TIES ARE AT RIGHT ANGLES UNLESS OTHERWISE NOTED.
 ALL LINES ARE STRAIGHT-LINE TIES UNLESS OTHERWISE NOTED.



CINQUINI & PASSARINO, INC.
LAND SURVEYING

▲ BOUNDARY
 ▲ TOPOGRAPHIC
 ▲ CONSTRUCTION
 ▲ SUBDIVISIONS

1360 No. Dutton Ave.
 Santa Rosa, Ca. 95401
 Phone: (707) 542-6268
 Fax: (707) 542-2106
 WWW.CINQUINIPASSARINO.COM