

CORNER RECORD

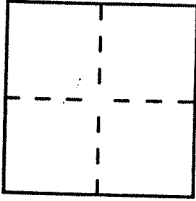
A.P.N. 34-360-13

City of Tiburon

Document Number 93-060901

County of Marin

Brief Legal Description Lot 17 "Map of Tiburon Highlands" 20 RM 50 California



CORNER TYPE

- Government Corner
- Meander
- Rancho
- Date of Survey _____
- Control
- Property
- Other

COORDINATES (Optional)

N. _____
 E. _____
 Zone _____ Datum _____
 Elev. _____

Corner — Left as found Found and tagged Established Reestablished Rebuilt

Identification and type of corner found: Evidence used to identify or procedure used to establish or reestablish the corner:

Found standard well monuments in position per
20 RM 50 Corners established per record map.

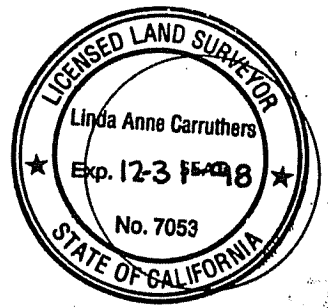
A description of the physical condition of the monument as found and as set or reset:

set pubs with brass tag stamped P.L.S. 7053

SURVEYOR'S STATEMENT

This Corner Record was prepared by me or under my direction in conformance with the Land Surveyors' Act on April 8 1997.

Signed Linda A. Carruthers L.S. or R.C.E. Number 7053

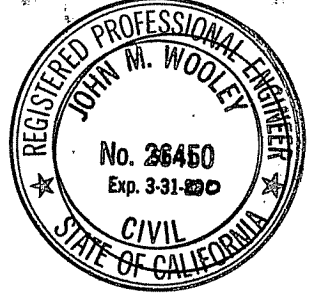


COUNTY SURVEYOR'S STATEMENT

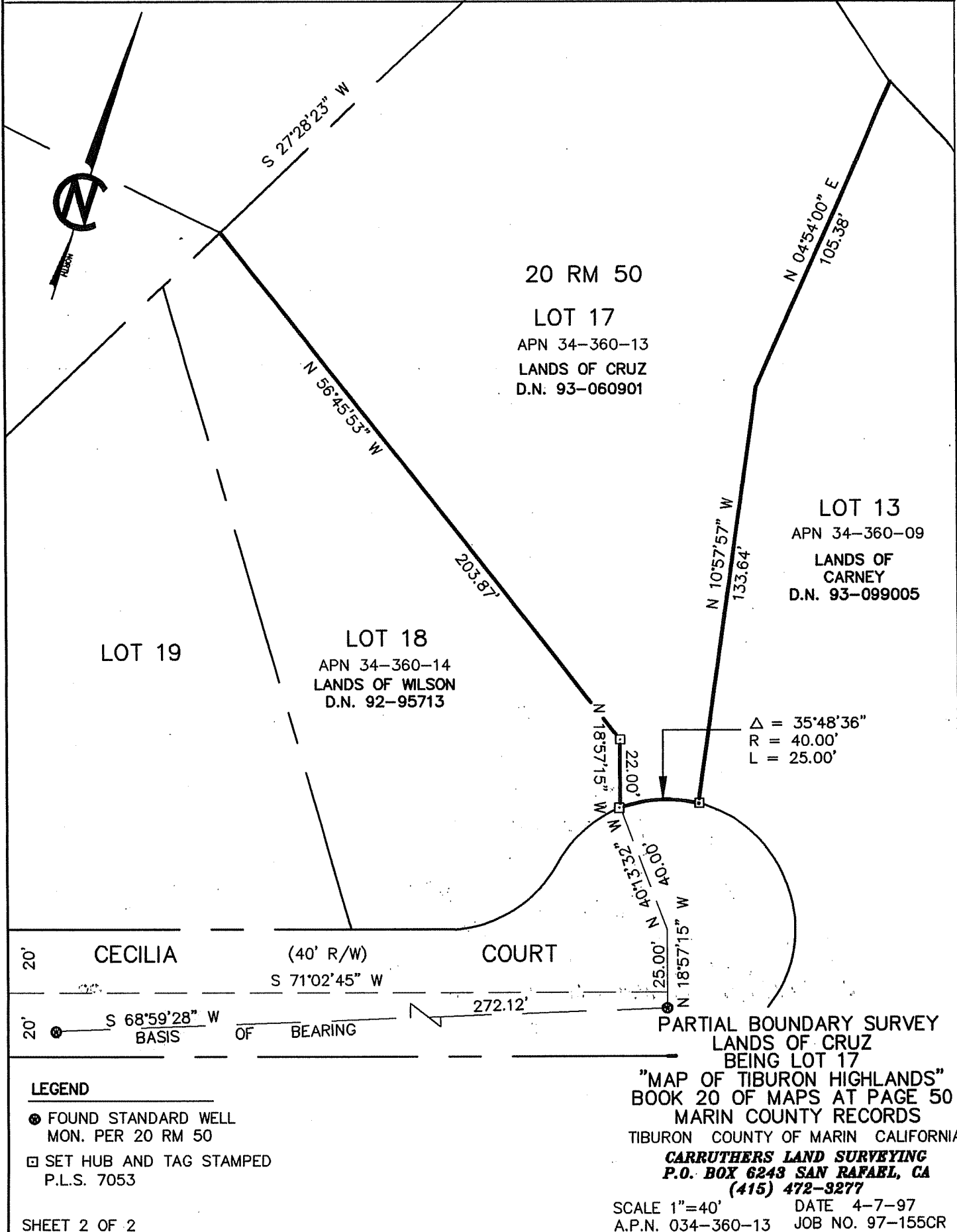
This Corner Record was received APRIL 11 1997 and examined

and filed APRIL 14 1997.

Signed John M. Wooley Title Deputy



County Surveyor's Comment _____



LEGEND

- FOUND STANDARD WELL
MON. PER 20 RM 50
- SET HUB AND TAG STAMPED
P.L.S. 7053

**PARTIAL BOUNDARY SURVEY
 LANDS OF CRUZ
 BEING LOT 17
 "MAP OF TIBURON HIGHLANDS"
 BOOK 20 OF MAPS AT PAGE 50
 MARIN COUNTY RECORDS
 TIBURON COUNTY OF MARIN CALIFORNIA
 CARRUTHERS LAND SURVEYING
 P.O. BOX 6243 SAN RAFAEL, CA
 (415) 472-3277**

SCALE 1"=40' DATE 4-7-97
 A.P.N. 034-360-13 JOB NO. 97-155CR