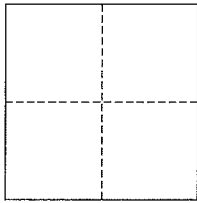


CORNER RECORD

City of Tiburon

Document Number AP# 034-360-08
County of Marin, California

Brief Legal Description Lot 12, 20 RM 50



CORNER TYPE

Government Corner Control
Meander Property
Rancho Other
Date of Survey October 23, 2012

COORDINATES (Optional)

N. _____
E. _____
Zone _____ NAD27 NAD83
NAD83 Epoch _____
Elev. _____
Vert. Datum: NGVD29 NAVD88
Meas. Units: Metric Imperial

Corner- Left as found Found and tagged Established Reestablished Rebuilt

Identification and type of corner found: Evidence used to identify or procedure used to establish or reestablish the corner:
Found original Standard Street Mons, per 20 RM 50.

A description of the physical condition of the monument as found and as set or reset: All Property Corner, and Property Line, related points were set as shown hereon, per 20 RM 50.

SURVEYOR'S STATEMENT

This corner Record was prepared by me or under my direction in conformance with the Land Surveyor's Act on December 31, 2012

Signed [Signature] P.L.S. or R.C.E. No. 30465



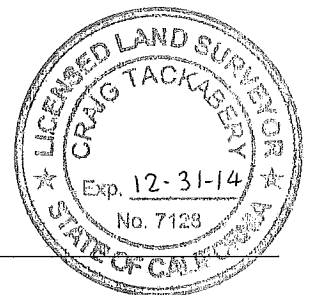
COUNTY SURVEYOR'S STATEMENT

This Corner Record was received JANUARY 2, 2013

and examined and filed JANUARY 7, 2012

Signed [Signature] P.L.S. or R.C.E. No. 7128

Title COUNTY SURVEYOR



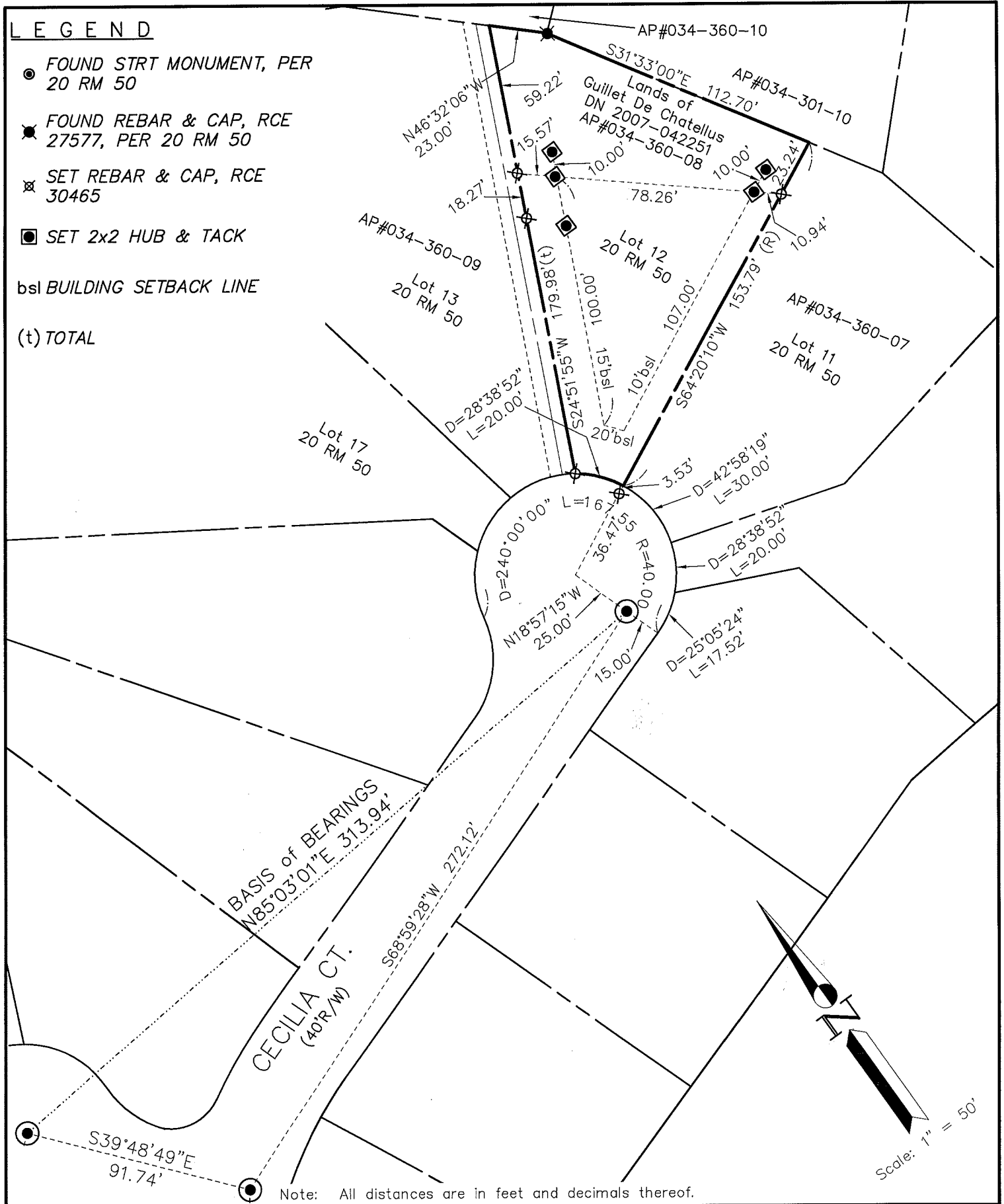
County Surveyor's Comment _____

LEGEND

- FOUND STRT MONUMENT, PER 20 RM 50
- ⊗ FOUND REBAR & CAP, RCE 27577, PER 20 RM 50
- ⊗ SET REBAR & CAP, RCE 30465
- ⊗ SET 2x2 HUB & TACK

bsl BUILDING SETBACK LINE

(t) TOTAL



SHEET	1	OF	1
SCALE:	1" = 50'	DESIGN:	PR
DATE:	Dec 2012	DRAWN:	PR
FILE:	2012-090	CHECKED:	J.L.H

J.L. ENGINEERING
 CIVIL ENGINEERS—LAND SURVEYORS
 1539 4th ST., SAN RAFAEL, CA. 94901 (415) 457-6647

Corner Record
 Lands of Guillet De Chatellus — 23 Cecilia Ct.
 APN 034-360-08, Tiburon, Marin County, CA