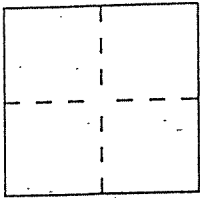


CORNER RECORD

Document Number 34-352-09

City of TIBURON County of MARIN, California

Brief Legal Description lot 1 Map of Tiburon Highlands (20 RM 50)
APN 34-352-09



CORNER TYPE

Government Corner Control
Meander Property
Rancho Other
Date of Survey OCT. 25, 1993

COORDINATES (Optional)

N. _____
E. _____
Zone _____ Datum _____
Elev. _____

Corner — Left as found Found and tagged Established Reestablished Rebuilt

Identification and type of corner found: Evidence used to identify or procedure used to establish or reestablish the corner:

Establish ANGLE Point @ the Northwest corner of Lot 1 of
the Map of Tiburon Highlands (20 RM 50) MARIN CO. Records
from existing street monuments on Southridge Drive as
shown upon said MAP

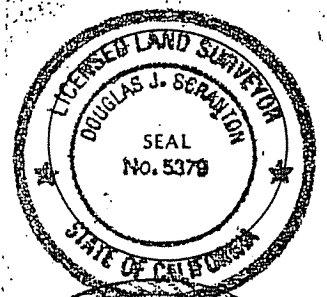
A description of the physical condition of the monument as found and as set or reset:

set 1/2" rebar with LS 5379 CAP

SURVEYOR'S STATEMENT

This Corner Record was prepared by me or under my direction in conformance with
the Land Surveyors' Act on October 28th 19 93.

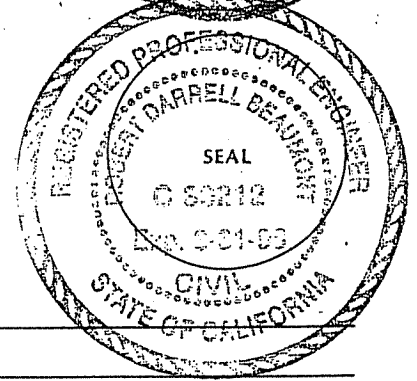
Signed Douglas J. Seranton L.S. or R.C.E. Number PLS No. 5379
renewal 6-30-96



COUNTY SURVEYOR'S STATEMENT

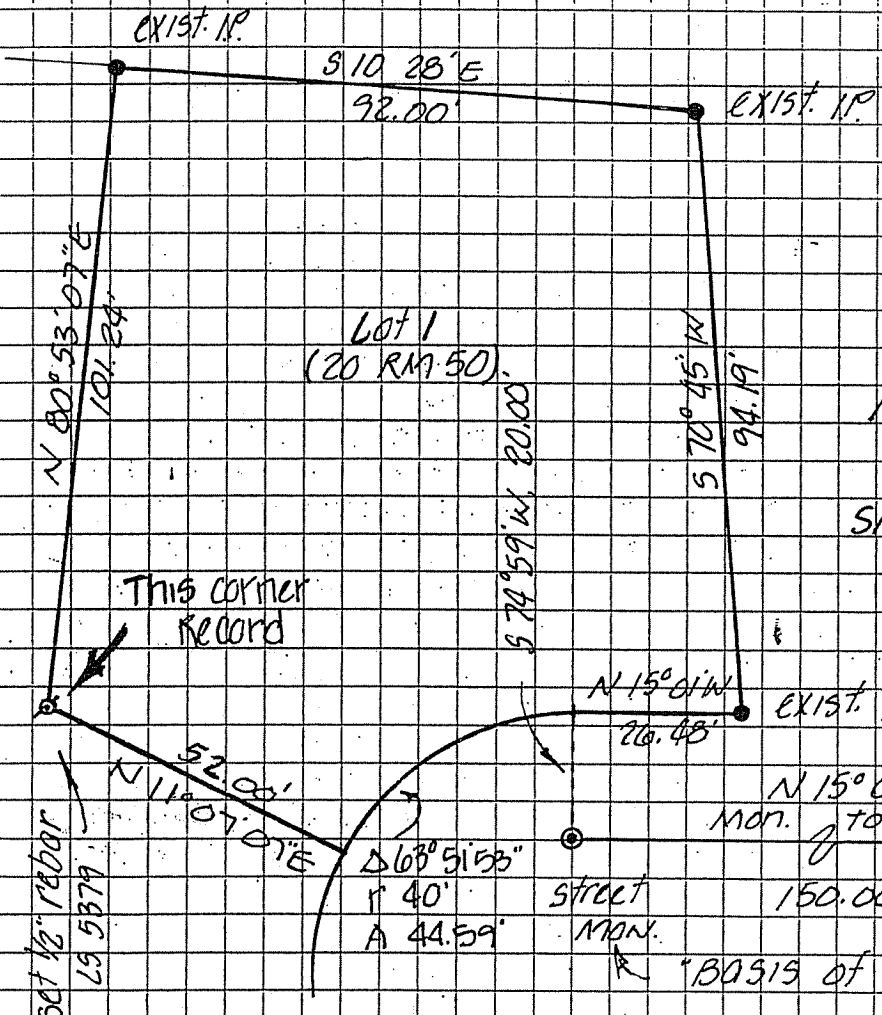
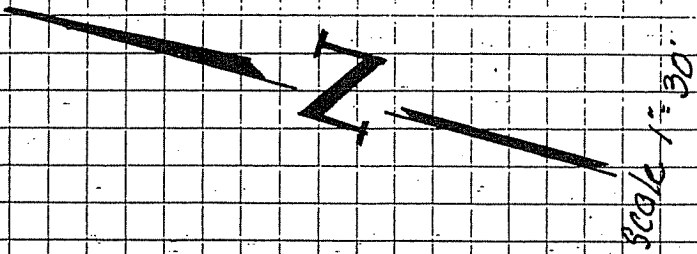
This Corner Record was received 11-2 19 93 and examined
and filed 11-3 19 93.

Signed R. Beaumont Title Des



County Surveyor's Comment _____

RECEIVED BY DJ SCRANTON SURVEYING 3 DUNE AVE. SUITE 208 NOVATO, CA 94945



Note:
Easements are
not shown

MAP of TIBURON
HIGHLANDS
Situs 4 Southridge Dr.
Tiburon, Ca
APN 34.352.09

(Southridge Drive)

N 15° 01' W
Mon. to Mon.
150.00
street mon.

"BASIS of BEARING"

CLAYFORD DR.