

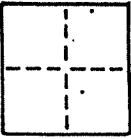
A.P. # 34-352-02

CORNER RECORD

COUNTY OF MARIN T. _____ R. _____ MERIDIAN CALIFORNIA

CORNER TYPE: GOV'T. CORNER MEANDER RANCHO CONTROL OTHER

CORNER IDENTIFICATION — DATE OF VISIT MAY 26, 1992



CORNER — LEFT AS FOUND FOUND AND TAGGED REESTABLISHED OBLITERATED CORNER REBUILT "NA"

PHYSICAL DESCRIPTION OF CORNER FOUND; EVIDENCE AND METHOD USED TO IDENTIFY OR REESTABLISH

A.P.# 34-352-02

TIBURON

PHYSICAL DESCRIPTION OF MONUMENTS REBUILT OR PERPETUATED

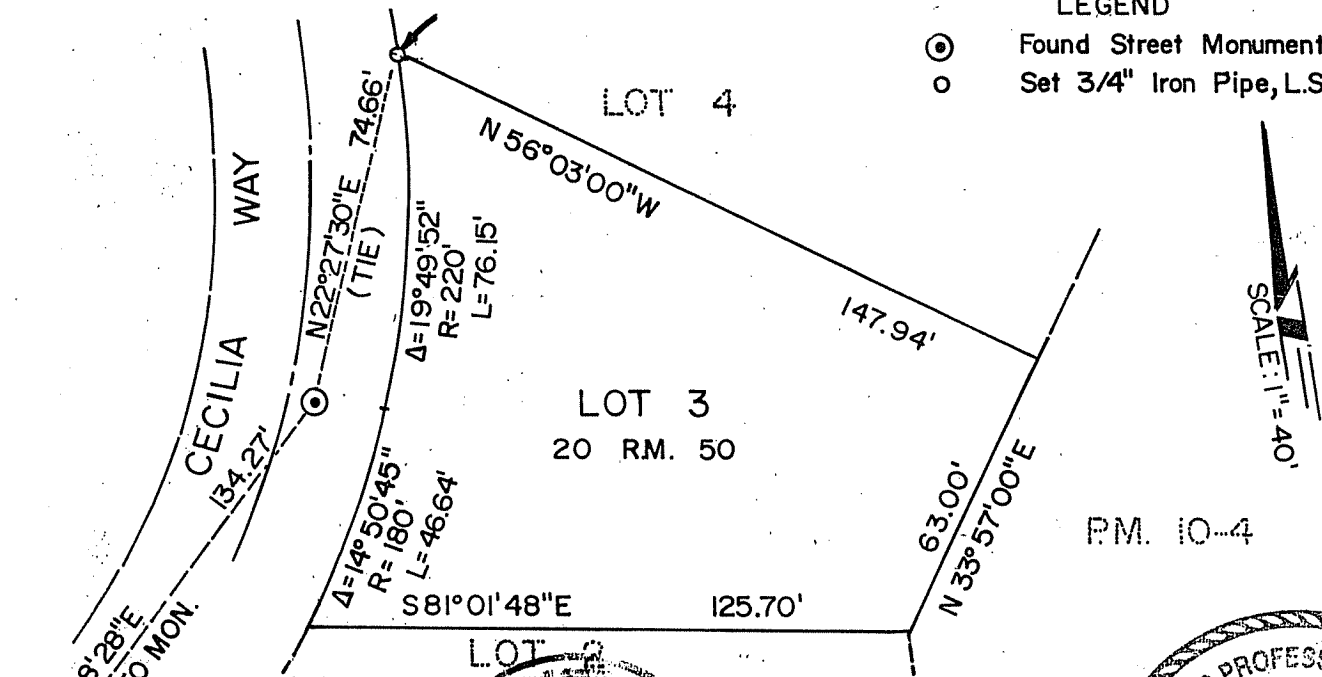
SET 3/4" IRON PIPE, TAGGED L.S. 5103 AT THE NORTHWEST CORNER OF LOT 3, 20 RM 50, MARIN COUNTY RECORDS.

CALIFORNIA COORDINATE SYSTEM ORDER: FIRST SECOND THIRD
STATIONS USED: NGS (USC & GS) STATE COUNTY OTHER STATION _____ STATION _____
ZONE _____ ELEVATION _____ NORTHINGS (Y) _____ EASTINGS (X) _____

SKETCH: (Include reference tie or witness points, remarks and topo of area)

LEGEND

- ⊙ Found Street Monument
- Set 3/4" Iron Pipe, L.S. 5103



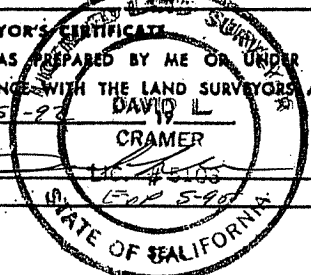
SURVEYOR'S CERTIFICATE

THIS CORNER RECORD WAS PREPARED BY ME OR UNDER MY DIRECTION IN CONFORMANCE WITH THE LAND SURVEYORS ACT ON 7-15-92

DAVID L. CRAMER

SIGNED: _____

L.S. or R.C.E. No.: _____



COUNTY SURVEYOR'S CERTIFICATE

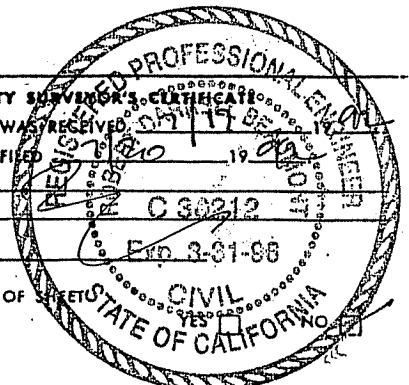
THE CORNER RECORD WAS RECEIVED ON 07/17/92 AND EXAMINED AND FILED

BY: _____

TITLE: _____

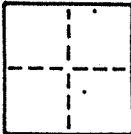
DOCUMENT No. _____

STATEMENT ON BACK OF _____



CORNER RECORD

COUNTY OF MARIN T. _____ R. _____ MERIDIAN CALIFORNIA
 CORNER TYPE: GOVT. CORNER MEANDER RANCHO CONTROL OTHER
 CORNER IDENTIFICATION — DATE OF VISIT MAY 26, 1992



CORNER — LEFT AS FOUND FOUND AND TAGGED REESTABLISHED OBLITERATED CORNER REBUILT "NA"

PHYSICAL DESCRIPTION OF CORNER FOUND; EVIDENCE AND METHOD USED TO IDENTIFY OR REESTABLISH

A.P. # 34-352-02

TIBURON

PHYSICAL DESCRIPTION OF MONUMENTS REBUILT OR PERPETUATED

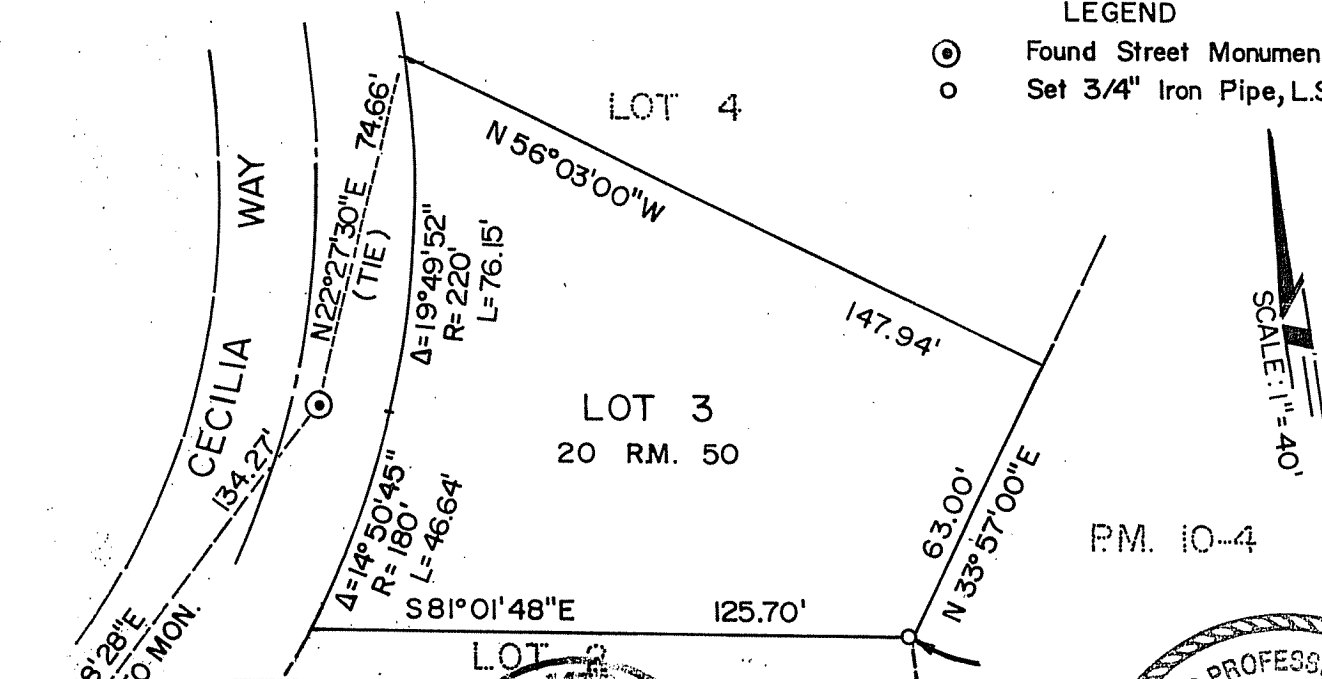
SET 3/4" IRON PIPE, TAGGED L.S. 5103 AT THE SOUTHEAST CORNER OF LOT 3
 20 RM 50, MARIN COUNTY RECORDS.

CALIFORNIA COORDINATE SYSTEM ORDER: FIRST SECOND THIRD
 STATIONS USED: NGS (USC & GS) STATE COUNTY OTHER STATION _____ STATION _____
 ZONE _____ ELEVATION _____ NORTHINGS (Y) _____ EASTINGS (X) _____

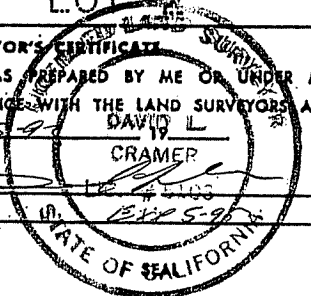
SKETCH: (Include reference tie or witness points, remarks and topo of area)

LEGEND

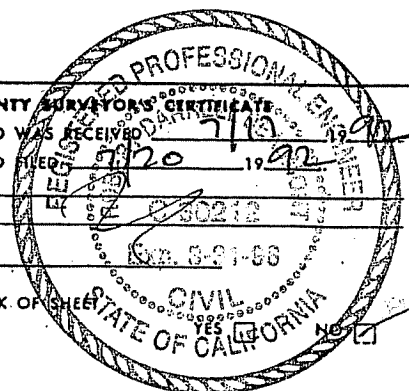
- ⊙ Found Street Monument
- Set 3/4" Iron Pipe, L.S. 5103



SURVEYOR'S CERTIFICATE
 THIS CORNER RECORD WAS PREPARED BY ME OR UNDER MY DIRECTION IN CONFORMANCE WITH THE LAND SURVEYORS ACT ON 7-15-92
 SIGNED: DAVID L CRAMER
 L.S. or R.C.E. No.: 1345-92

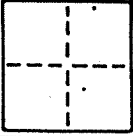


COUNTY SURVEYOR'S CERTIFICATE
 THE CORNER RECORD WAS RECEIVED AND EXAMINED AND FILED 7/10/92
 BY: [Signature]
 TITLE: CLERK
 DOCUMENT No. 1345-92
 STATEMENT ON BACK OF SHEET



CORNER RECORD

COUNTY OF MARIN T. _____ R. _____ MERIDIAN _____ CALIFORNIA
 CORNER TYPE: GOV'T. CORNER MEANDER RANCHO CONTROL OTHER
 CORNER IDENTIFICATION — DATE OF VISIT MAY 26, 1992



CORNER — LEFT AS FOUND FOUND AND TAGGED REESTABLISHED OBLITERATED CORNER REBUILT "NA"

PHYSICAL DESCRIPTION OF CORNER FOUND; EVIDENCE AND METHOD USED TO IDENTIFY OR REESTABLISH

A.P.# 34-352-02

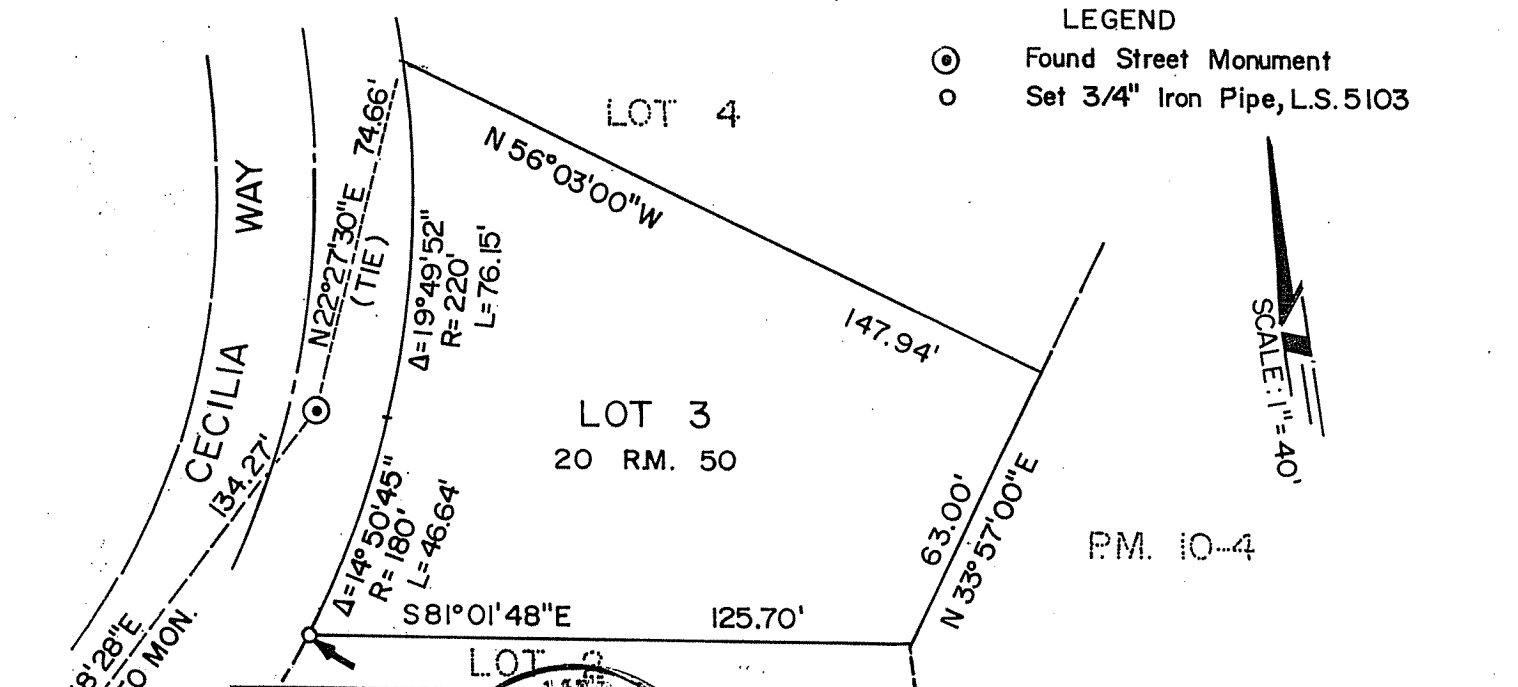
TIBURON

PHYSICAL DESCRIPTION OF MONUMENTS. REBUILT OR PERPETUATED

SET 3/4" IRON PIPE, TAGGED L.S.5103 AT THE SOUTHWEST CORNER OF LOT 3
 20 RM 50, MARIN COUNTY RECORDS.

CALIFORNIA COORDINATE SYSTEM ORDER: FIRST SECOND THIRD
 STATIONS USED: NGS (USC & GS) STATE COUNTY OTHER STATION _____ STATION _____
 ZONE _____ ELEVATION _____ NORTHINGS (Y) _____ EASTINGS (X) _____

SKETCH: (Include reference tie or witness points, remarks and topo of area)



SURVEYOR'S CERTIFICATE
 THIS CORNER RECORD WAS PREPARED BY ME OR UNDER MY DIRECTION IN CONFORMANCE WITH THE LAND SURVEYORS ACT ON 7-15-92
 SIGNED: DAVID L CRAMER L.S. # 5103
 L.S. or. R.C.E. No.: _____
 STATE OF CALIFORNIA

COUNTY SURVEYOR'S CERTIFICATE
 THE CORNER RECORD WAS RECEIVED 7/17 1992
 AND EXAMINED AND FILED 7/22 1992
 BY: _____
 TITLE: _____
 DOCUMENT No. _____
 STATEMENT ON BACK OF SHEET YES NO