

21-003

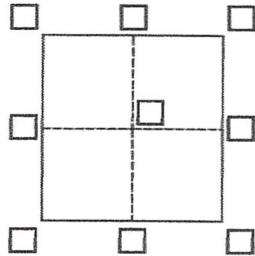
CORNER RECORD

Agency Index APM 034-330-58

Document Number 2018-06404

City of Tiburon County of Marin, California

Brief Legal Description Lot 22, 20 RM 54, Marin Co. Records



CORNER TYPE

- Government Corner Control
- Meander Property
- Rancho Other

Date of Survey _____

COORDINATES (Optional)

- N. _____ E. _____
- Elevation _____
- Units Metric U.S. Survey Foot
- Horizontal Datum _____
- Zone _____ Epoch Date _____
- Vertical Datum _____
- Complies with Public Resources Code §§8801-8819
- Complies with Public Resources Code §§8890-8902

- PLS Act Ref.: 8765(d) 8771 8773 Other:
- Corner/Monument: Left as found Established Rebuilt Pre-Construction
- Found and tagged Reestablished Referenced Post-Construction

Narrative of corner identified and monument as found, set, reset, replaced, or removed:
 See sheet #2 for description(s):

SURVEYOR'S STATEMENT

This Corner Record was prepared by me or under my direction in conformance with the Professional Land Surveyors' Act on November 18, 2020.

Signed Dale White P.L.S. or R.C.E. No. PLS 4397



COUNTY SURVEYOR'S STATEMENT

This Corner Record was received 11-24-20 and examined and filed 05-12-2021.

Signed [Signature] P.L.S. or R.C.E. No. 9292

Title Deputy





County Surveyor's Comment _____

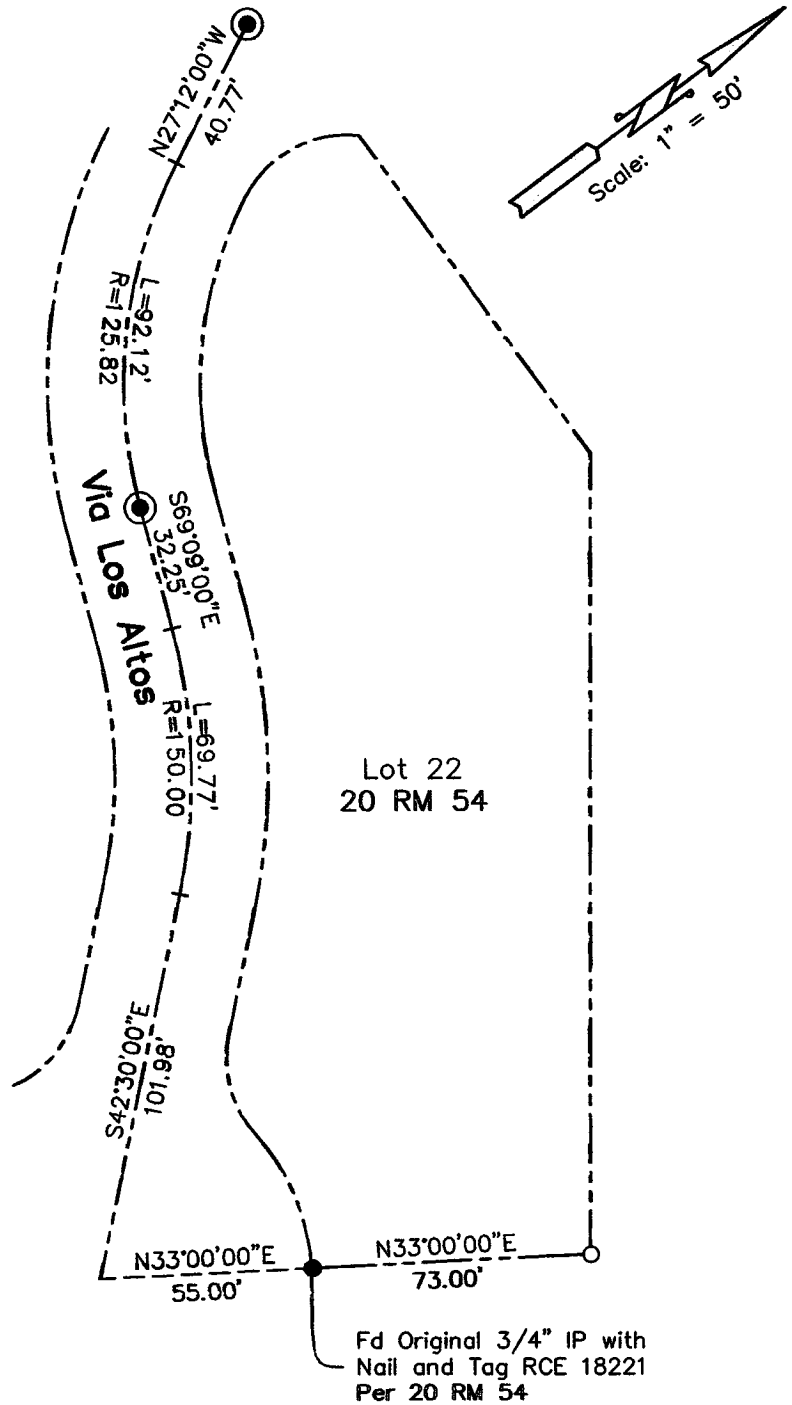


Abbreviations

- BC Beginning of Curve
- (C) Calculated
- EC End of Curve
- (M) Measured
- (R) Radial Bearing
- RM Record Map

Legend

-  Property Line
-  Set 1\5" Rebar and
and Plastic Cap LS 4397
-  Fd. Street Monument
With 2" Bronze Disk and
Punchmark - RCE 18221
Per 20 RM 54
-  Found Monument
As Noted



Survey Note

Corners - Found original southwesterly lot corner. Set southeasterly lot corner based on the found lot corner. Calculations were based on the street monuments in Via Los Altos as shown on the Corner Record by Phil Danskin for APN 034-330-43 & 44.

88 Via Los Altos
Tiburon, CA
APN 034-330-58

Boundary Line Survey
Lot 22, 20 RM 54
Marin County Records