

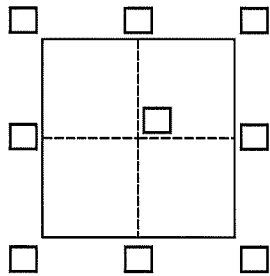
# CORNER RECORD

Agency Index

Document Number

DPW#18-056  
APN 034-330-05 & 56

City of TIBURON County of MARIN, California  
Brief Legal Description APN 034-330-56 & 034-330-05



**CORNER TYPE**

- Government Corner  Control
- Meander  Property
- Rancho  Other

Date of Survey August 7, 2018

**COORDINATES (Optional)**

- N. \_\_\_\_\_ E. \_\_\_\_\_
- Elevation \_\_\_\_\_
- Units  Metric  U.S. Survey Foot
- Horizontal Datum \_\_\_\_\_
- Zone \_\_\_\_\_ Epoch Date \_\_\_\_\_
- Vertical Datum \_\_\_\_\_
- Complies with Public Resources Code §§8801-8819
- Complies with Public Resources Code §§8890-8902

- PLS Act Ref.:  8765(d)  8771  8773  Other:
- Corner/Monument:  Left as found  Established  Rebuilt  Pre-Construction
- Found and tagged  Reestablished  Referenced  Post-Construction

Narrative of corner identified and monument as found, set, reset, replaced, or removed:  
 See sheet #2 for description(s):

**FOUND STREET MONUMENTS AND 3/4" IRON PIPE TO BE IN GOOD CONDITION AND RECORD POSITION PER AMENDED RECORD MAP OF "LA CRESTA", FILED IN BOOK 18 MAPS, PAGE 99, M.C.R. & USED TO SET POINT ON LINE, AS SHOWN ON PAGE 2 EXHIBIT.**

**SURVEYOR'S STATEMENT**

This Corner Record was prepared by me or under my direction in conformance with the Professional Land Surveyors' Act on August 10, 2018.

Signed Michael E. Ford P.L.S. or ~~P.C.E.~~ No. 7237



**COUNTY SURVEYOR'S STATEMENT**

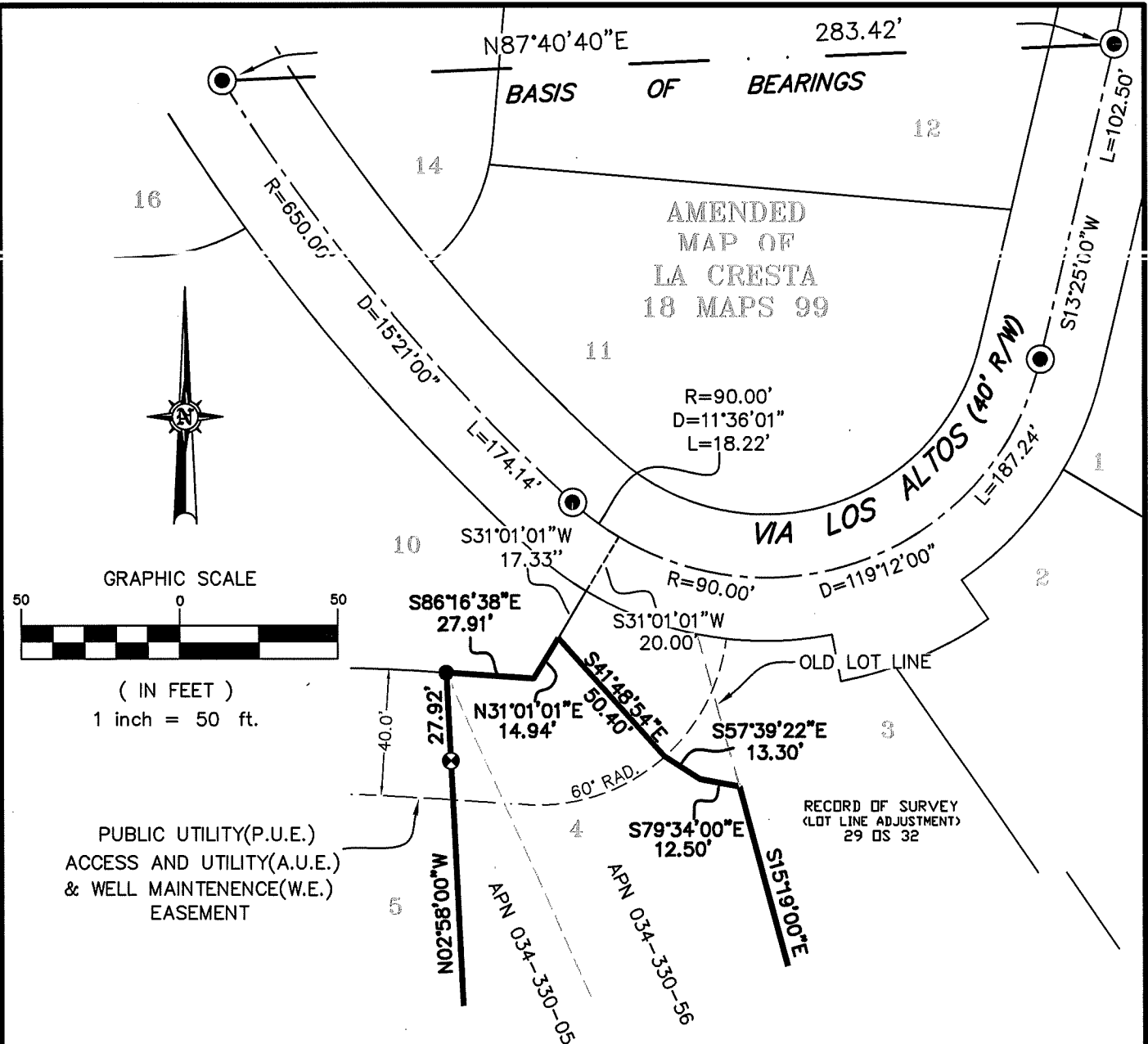
This Corner Record was received AUGUST 16, 2018 and examined and filed NOV. 21, 2019.

Signed [Signature] P.L.S. or R.C.E. No. 9292

Title DEPUTY C.S.



County Surveyor's Comment



**BASIS OF BEARINGS**  
 N87°40'40"E BETWEEN FOUND CENTERLINE MONUMENTS AS SHOWN ON AMENDED MAP OF LA CRESTA FILED IN BOOK 18 OF MAPS, AT PAGE 99, MARIN COUNTY RECORDS.

- LEGEND**
- ⊙ FOUND STREET MONUMENT, 2" BRASS DISK PUNCHED
  - FOUND 3/4" IRON PIPE, RCE18221
  - ⊗ SET MAGNETIC NAIL & WASHER, LS7237
  - LLA LOT LINE ADJUSTMENT
  - RAD. RADIUS

**NOTES:**  
 ALL DISTANCES SHOWN ARE IN FEET AND DECIMALS THEREOF.  
 ALL COURSES SHOWN HEREON ARE RECORD AND MEASURED PER AMENDED MAP OF "LA CRESTA" 18 RM 99, AND RECORD OF SURVEY (LLA—LOTS 3 & 4) 29 OS 32, MARIN COUNTY RECORDS.



2300 bethards drive, suite J  
 santa rosa, california 95405  
 p 707.542.8513 - f 707.542.1825  
 www.michaelfordinc.com