

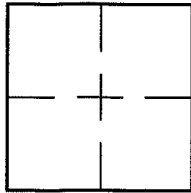
CORNER RECORD

Document Number A.P.# 034-311-26

City of TIBURON

County of MARIN, California

Brief Legal Description 26 O.S. 90



CORNER TYPE		COORDINATES (Optional)	
Government Corner	<input type="checkbox"/>	Control	<input type="checkbox"/>
Meander	<input type="checkbox"/>	Property	<input checked="" type="checkbox"/>
Rancho	<input type="checkbox"/>	Other	<input type="checkbox"/>
Date of Survey <u>5/11/05</u>			

N. _____
 E. _____
 Zone NAD27 NAD83
 NAD83 Epoch _____
 Elev. _____
 Vert. Datum: NGVD29 NAVD88
 Meas. Units: Metric Imperial

Corner- Left as found Found and tagged Established Reestablished Rebuilt

Identification and type of corner found: Evidence used to identify or procedure used to establish or reestablish the corner:
REESTABLISHED SOUTHERLY PROPERTY LINE AND SET PIPE/PLUG 4694 ON PROPERTY LINE (SEE SHEET 2)

A description of the physical condition of the monument as found and as set or reset: SEE SHEET 2.

SURVEYOR'S STATEMENT

This Corner Record was prepared by me or under my direction in conformance with the Land Surveyor's Act on MAY 13 2005

Signed Lawrence P. Doyle P.L.S. or R.C.E. No. P.L.S. 4694



COUNTY SURVEYOR'S STATEMENT

This Corner Record was received MAY 31, 2005 and examined and filed JULY 28, 2005

Signed [Signature] P.L.S. or R.C.E. No. 7128

Title COUNTY SURVEYOR



County Surveyor's Comment _____

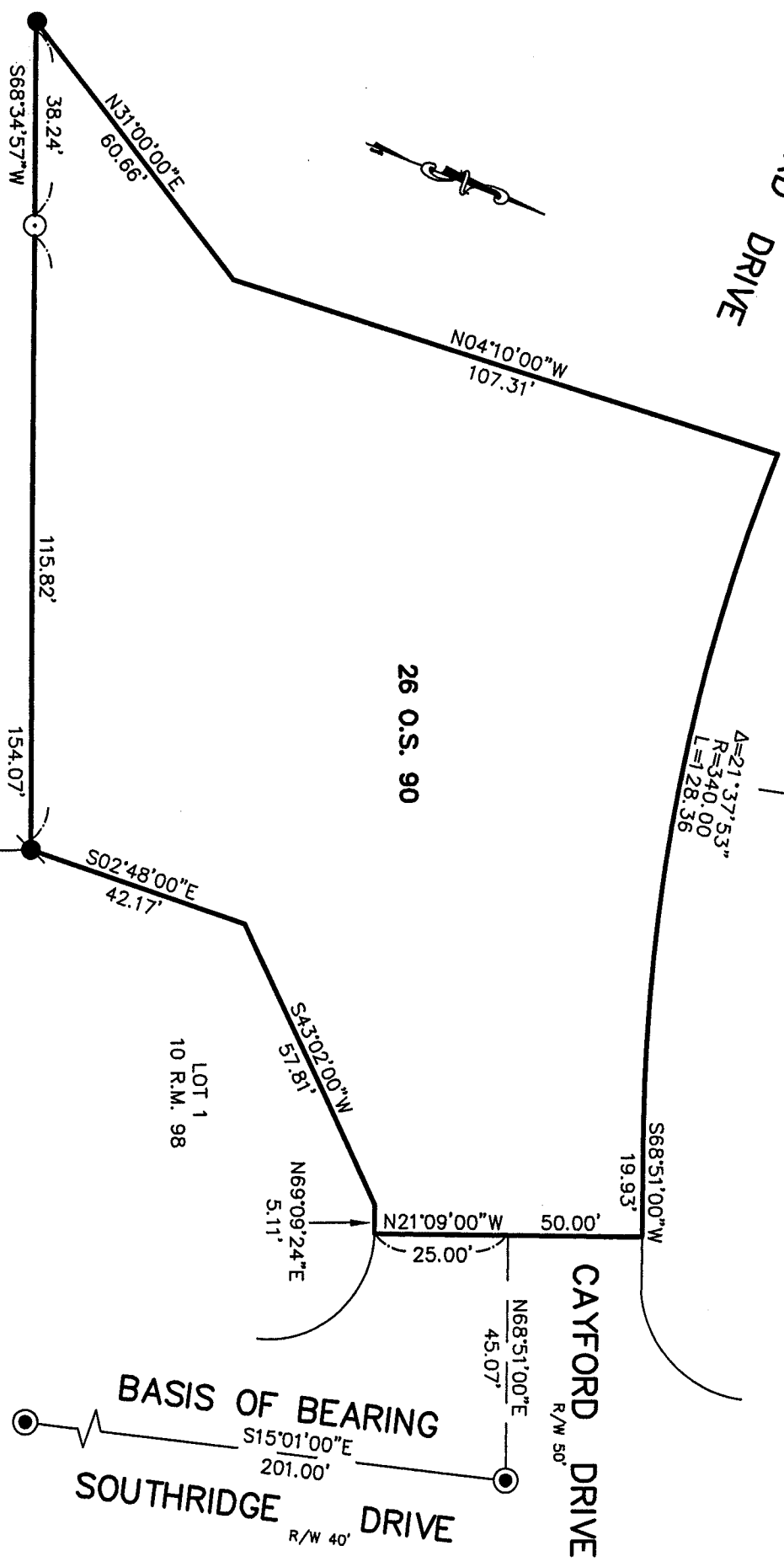
CAYFORD DRIVE

LOT 41
20 R.M. 50

LOT 42
20 R.M. 50

$\Delta=21^{\circ}37'53''$
 $R=340.00$
 $L=128.36$

26 O.S. 90



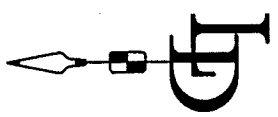
LEGEND

- STREET MONUMENT
PER 26 O.S. 90
FOUND PIPE/TAG 18221
PER 26 O.S. 90
- FOUND REBAR/CAP 4402
PER 26 O.S. 90
- SET PIPE/PLUG 4694

BASIS OF BEARING

THE BASIS OF BEARING IS
S15°01'00"E BETWEEN FOUND
STREET MONUMENTS ON
SOUTHRIDGE DRIVE PER 26 R.M. 90
AND 26 O.S. 90

LOT 2
10 R.M. 98



CORNER RECORD
26 O.S. 90

TIBURON
MARIN COUNTY
CALIFORNIA

LAWRENCE P. DOYLE
LAND SURVEYOR/CIVIL ENGINEER
P.O. BOX 1609 MILL VALLEY CA 94942 (415-388-9585)

SCALE 1" = 30'
DATE 5/13/05

DRAWN BY: _____
SHEET 2 OF 2

DRAWING NO. 1384-05