

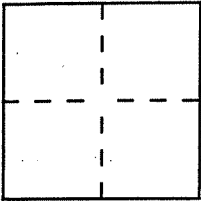
CORNER RECORD

Document Number A.P.N. 034-311-12

City of TIBURON

County of MARIN, California

Brief Legal Description LOT 11, 10 R.M. 9B



CORNER TYPE

Government Corner Control
Meander Property
Rancho Other
Date of Survey NOVEMBER 20, 1999

**COORDINATES
(Optional)**

N. _____
E. _____
Zone _____ Datum _____
Elev. _____

Corner — Left as found Found and tagged Established Reestablished Rebuilt

Identification and type of corner found: Evidence used to identify or procedure used to establish or reestablish the corner:

= SEE OVER =

A description of the physical condition of the monument as found and as set or reset:

= SEE OVER =

SURVEYOR'S STATEMENT

This Corner Record was prepared by me or under my direction in conformance with

the Land Surveyors' Act on FEB. 22, 2000, 19 .

Signed David Contreras L.S. or R.C.E. Number 5065

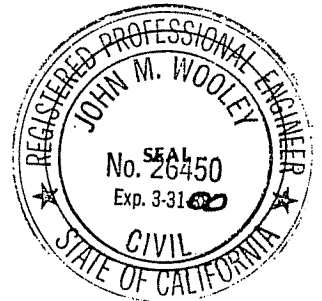


COUNTY SURVEYOR'S STATEMENT

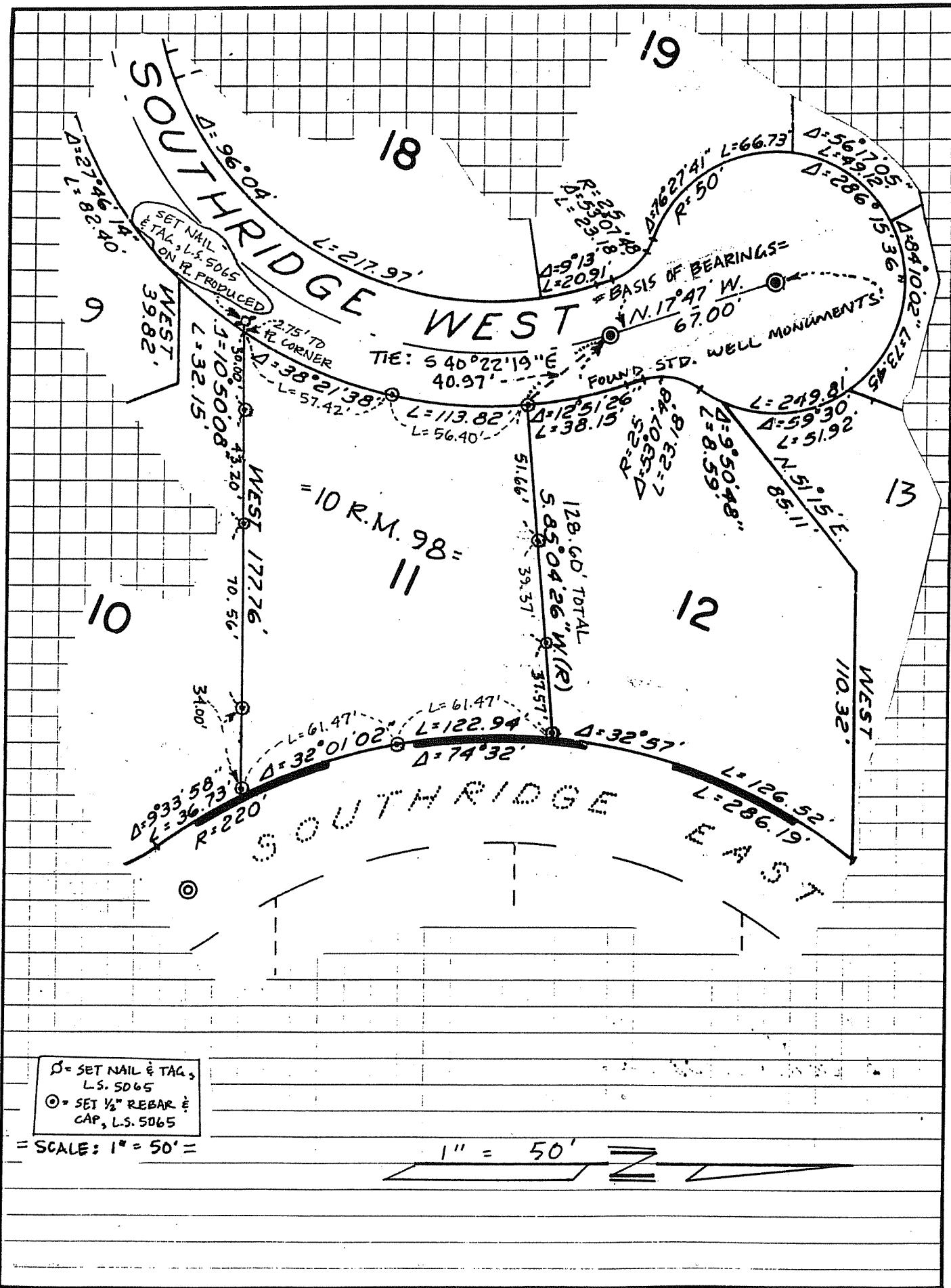
This Corner Record was received 2-28-2000, 19 and examined

and filed 2-29-2000, 19 .

Signed John M. Wooley Title Deputy



County Surveyor's Comment _____



Ⓞ = SET NAIL & TAG,
 L.S. 5065
 ⊙ = SET 1/2" REBAR &
 CAP, L.S. 5065

SCALE: 1" = 50'

