

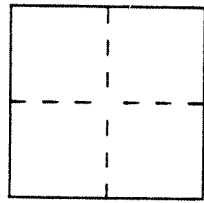
CORNER RECORD

SHT. 1 of 2 ✓

Document Number 34-305-07

City of Tiburon, Marin, California

Brief Legal Description Lot 92 10 RM 4



CORNER TYPE

- Government Corner [] Meander [] Rancho [] Date of Survey [] Control [] Property [x] Other []

COORDINATES (Optional)

N. [] E. [] Zone [] Datum [] Elev. []

Corner — Left as found [] Found and tagged [] Established [x] Reestablished [] Rebuilt []

Identification and type of corner found: Evidence used to identify or procedure used to establish or reestablish the corner: We used the street monuments shown on the sketch to position the new corners.

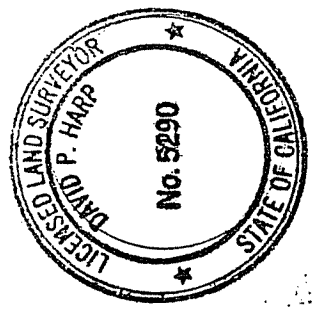
A. P. # 34-305-07

A description of the physical condition of the monument as found and as set or reset: Set 1/2" Rebar with plastic cap embossed LS 5290.

SURVEYOR'S STATEMENT

This Corner Record was prepared by me or under my direction in conformance with the Land Surveyors' Act on November 20 1921.

Signed David Harrp L.S. or R.C.E. Number 5290

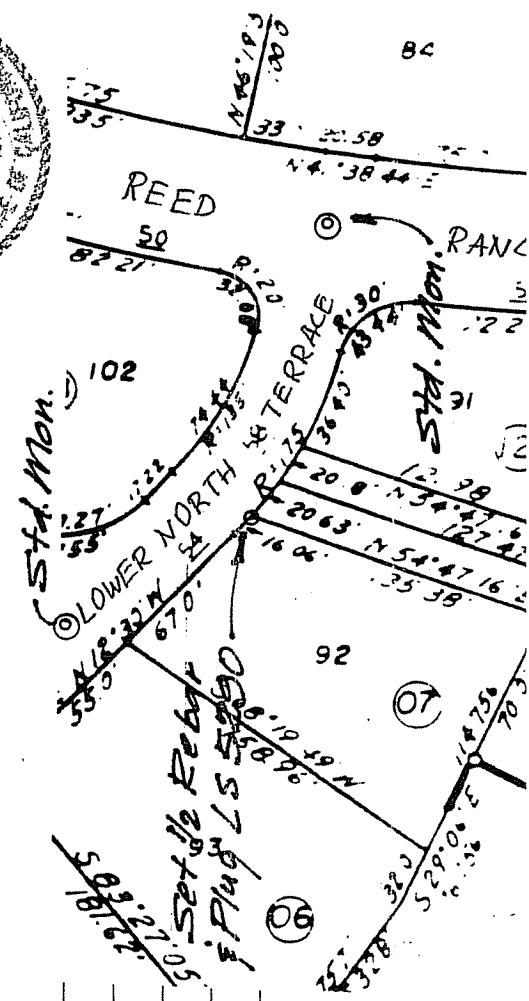
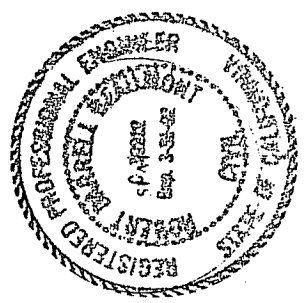


COUNTY SURVEYOR'S STATEMENT

This Corner Record was received [] 19 [] and examined and filed [] 19 []

Signed [] Title []

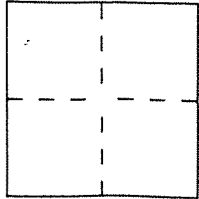
County Surveyor's Comment []



SHT. 2 of 2

CORNER RECORD

Document Number _____
 City of Tiburon County of Marin, California
 Brief Legal Description Lot 92 10 RMA



CORNER TYPE

Government Corner Control
 Meander Property
 Rancho Other
 Date of Survey _____

COORDINATES (Optional)

N. _____
 E. _____
 Zone _____ Datum _____
 Elev. _____

Corner — Left as found Found and tagged Established Reestablished Rebuilt

Identification and type of corner found: Evidence used to identify or procedure used to establish or reestablish the corner:

We used the street monuments shown on sketch to position new corners.

A.P. # 34-305-07

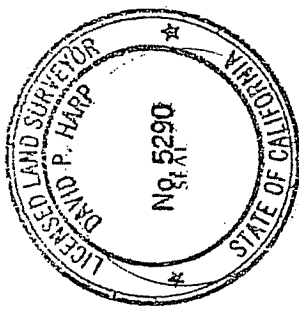
A description of the physical condition of the monument as found and as set or reset:

Set 1/2" Rebar with plastic cap embossed LS 5290

SURVEYOR'S STATEMENT

This Corner Record was prepared by me or under my direction in conformance with the Land Surveyors' Act on November 20 1991.

Signed David Harp L.S. or R.C.E. Number 5290



COUNTY SURVEYOR'S STATEMENT

This Corner Record was received 12/2 1991 and examined and filed 12/2 1991

Signed PKR Title ESC

County Surveyor's Comment _____

