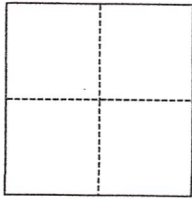


CORNER RECORD

Agency Index DPW 19-170Document Number 034-305-05City of Tiburon County of Marin, CaliforniaBrief Legal Description Lot 94, Map of the Reedlands, Unit 3, 10 RM 4**CORNER TYPE****COORDINATES (Optional)**

- Government Corner Control
 Meander Property
 Rancho Other

N. _____ E. _____

Elevation _____

Units Metric U.S. Survey Foot

Horizontal Datum _____

Zone _____ Epoch Date _____

Date of Survey September 12, 2019

Vertical Datum _____

 Complies with Public Resources Code §§8801-8819 Complies with Public Resources Code §§8890-8902PLS Act Ref.: 8765(d) 8771 8773 Other:Corner/Monument: Left as found Established Rebuilt Pre-Construction Found and tagged Reestablished Referenced Post-Construction

Narrative of corner identified and monument as found, set, reset, replaced, or removed:

 See sheet #2 for description(s):

Reestablish a portion of the Northerly line of Lot 94, Map of the Reedlands, Unit 3, 10 RM 4 (common with the Southerly line of Lot 93 of said referred map) from standard street monument on Lower North Terrace depicted upon said map. This property was previously surveyed per the Marin County Corner Record filed 02/20/1987 for APN 034-305-05. See sheet 2 of 2 for details for points found and set.

SURVEYOR'S STATEMENT

This Corner Record was prepared by me or under my direction in conformance with

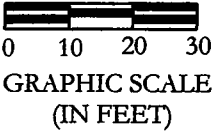
the Professional Land Surveyors' Act on September 27, 2019Signed *Douglas J. Scranton* P.L.S. or R.C.E. No. PLS 5379**COUNTY SURVEYOR'S STATEMENT**This Corner Record was received OCT. 1, 2019and examined and filed FEB. 24, 2020Signed *J. Semerad* P.L.S. or R.C.E. No. 9292Title Deputy C.S.

County Surveyor's Comment



LEGEND

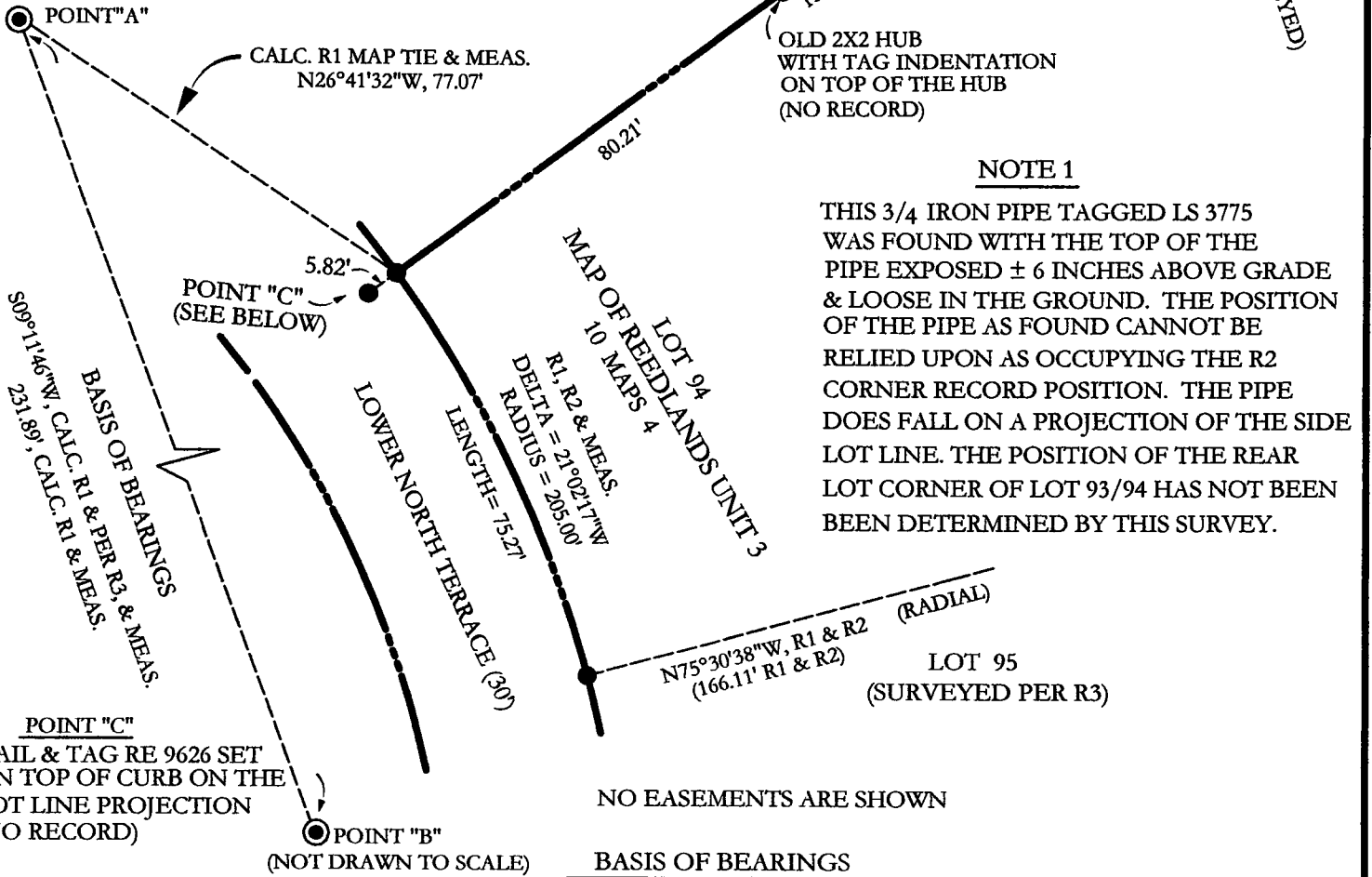
- STANDARD STREET MONUMENT PER R1 (CONCRETE CYLINDER WITH SMALL PIN)
- SET 1/2" REBAR WITH PLASTIC CAP EMBOSSED "PLS 5379 SCRANTON" ATTACHED TO TOP OF REBAR WITH THE TOP OF THE REBAR DRIVEN FLUSH TO THE SURROUNDING GRADE ON THE LOT LINE AS SHOWN
- EXISTING 3/4 INCH IRON PIPE TAGGED LS 3775 SET PER R2 UNLESS NOTED OTHERWISE



- LOT LINE
- SURVEY TIE LINE OR LOT LINE THAT IS SHOWN FOR CLARIFICATION PURPOSES ONLY
- CALC. CALCULATED
- MEAS. MEASURED

REFERENCES

- R1 10 MAPS 4
- R2 MARIN CO. CORNER RECORD FILED 2/20/1987, APN 034-305-05
- R3 MARIN CO. CORNER RECORD FILED 10/16/2003, APN 034-305-04



NOTE 1

THIS 3/4 IRON PIPE TAGGED LS 3775 WAS FOUND WITH THE TOP OF THE PIPE EXPOSED ± 6 INCHES ABOVE GRADE & LOOSE IN THE GROUND. THE POSITION OF THE PIPE AS FOUND CANNOT BE RELIED UPON AS OCCUPYING THE R2 CORNER RECORD POSITION. THE PIPE DOES FALL ON A PROJECTION OF THE SIDE LOT LINE. THE POSITION OF THE REAR LOT CORNER OF LOT 93/94 HAS NOT BEEN DETERMINED BY THIS SURVEY.

ALL DIMENSIONS GIVEN IN FEET AND DECIMALS THERE OF