

CORNER RECORD

Document Number A.P.N. 034-303-04

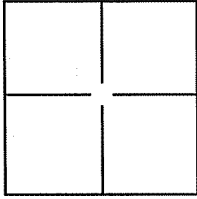
City of Tiburon

County of Marin, California

Brief Legal Description Lot 109, Map of the Reedlands, 42 Reed Ranch Road, 10 R.M. 4.

CORNER TYPE

COORDINATES(Optional)



Government Corner Control
 Meander Property
 Rancho Other

N. _____
 E. _____
 Zone _____ NAD27 NAD83
 NAD83 Epoch _____
 Elev. _____
 Vert. Datum: NGVD29 NADV88
 Meas. Units: Metric Imperial

Date of Survey 10 July 2008

Corner - Left as found Found and tagged Established Reestablished Rebuilt

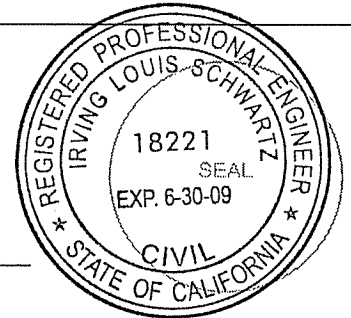
Identification and type of corner found: Evidence used to identify or procedure used to establish or reestablish the corner:
Found Standard Street Monuments (3), Town of Tiburon, along Reed Ranch Road per 10 R.M. 4.

A description of the physical condition of the monument as found and as set or reset:
Set 3/4" Iron Pipes (1 at SW corner, 1 at SE corner and 1 on southerly line), three Ginney points (2 on easterly line and 1 on westerly line), Mag Nail at top of fence (1 on westerly line and 1 on southerly line), 1/2" Iron Pipe at NW corner (1), 60D Nail at NE corner (1), See Exhibit "A".

SURVEYOR'S STATEMENT

This Corner Record was prepared by me or under my direction in conformance with the Land Surveyor's Act on JULY 15, 2008.

Signed [Signature] P.L.S. or R.C.E. No.: 18221



COUNTY SURVEYOR'S STATEMENT

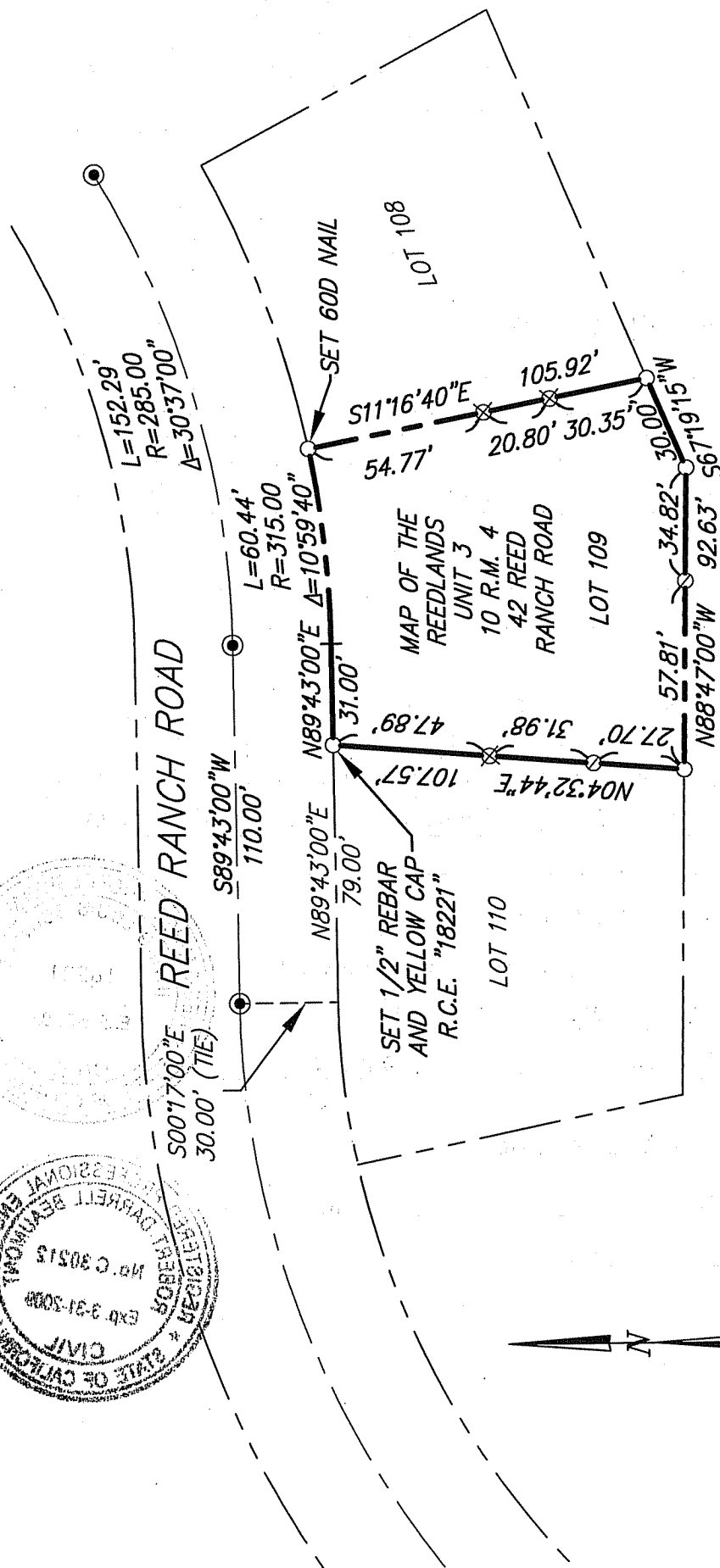
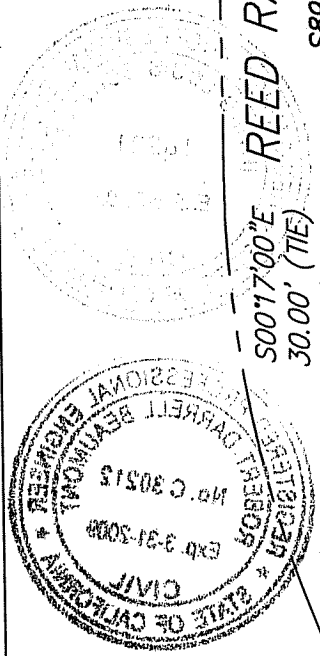
This Corner Record was received JULY 21, 2008 and examined and filed AUGUST 5, 2008.

Signed [Signature] P.L.S. or R.C.E. No.: 30212

Title DEPUTY COUNTY SURVEYOR

County Surveyor's Comment _____





- LEGEND**
- SET 3/4" IRON PIPE & YELLOW CAP "R.C.E. 18221", EXCEPT AS NOTED.
 - ⊗ SET GINNEY - POINT ON PROPERTY LINE
 - SET MAG NAIL - TOP OF FENCE - POINT ON PROPERTY LINE
 - FOUND STANDARD STREET MONUMENT

NOTE:
 ALL DIMENSIONS AND BEARINGS SHOWN HEREON ARE PER 10 R.M. 4.

EXHIBIT "B"

ILS ASSOCIATES, INC.®
 CIVIL ENGINEERING AND LAND SURVEYING



79 GALLI DRIVE, SUITE A, NOVATO, CA 94948-9717 (415) 883-8800 FAX (415) 883-2768

A.P.N. 034-303-04