

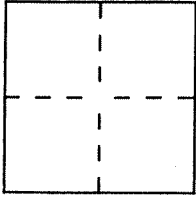
# CORNER RECORD

Document Number A.P. # 34-301-06 & 11

City of TIBURON

County of MARIN, California

Brief Legal Description LOT 70, 10 RM 4, 43 Reed Ranch Rd, - 34-301-06/11



### CORNER TYPE

Government Corner  Control   
 Meander  Property   
 Rancho  Other   
 Date of Survey \_\_\_\_\_

### COORDINATES (Optional)

N. \_\_\_\_\_  
 E. \_\_\_\_\_  
 Zone \_\_\_\_\_ Datum \_\_\_\_\_  
 Elev. \_\_\_\_\_

Corner — Left as found  Found and tagged  Established  Reestablished  Rebuilt

Identification and type of corner found: Evidence used to identify or procedure used to establish or reestablish the corner:

See Sketch on Back

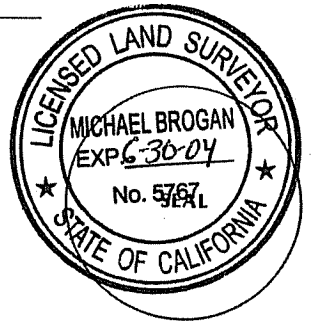
A description of the physical condition of the monument as found and as set or reset:

See Sketch on Back

### SURVEYOR'S STATEMENT

This Corner Record was prepared by me or under my direction in conformance with the Land Surveyors' Act on MAY 28 2001

Signed Michael A. Brogan L.S. or R.C.E. Number LS 5767



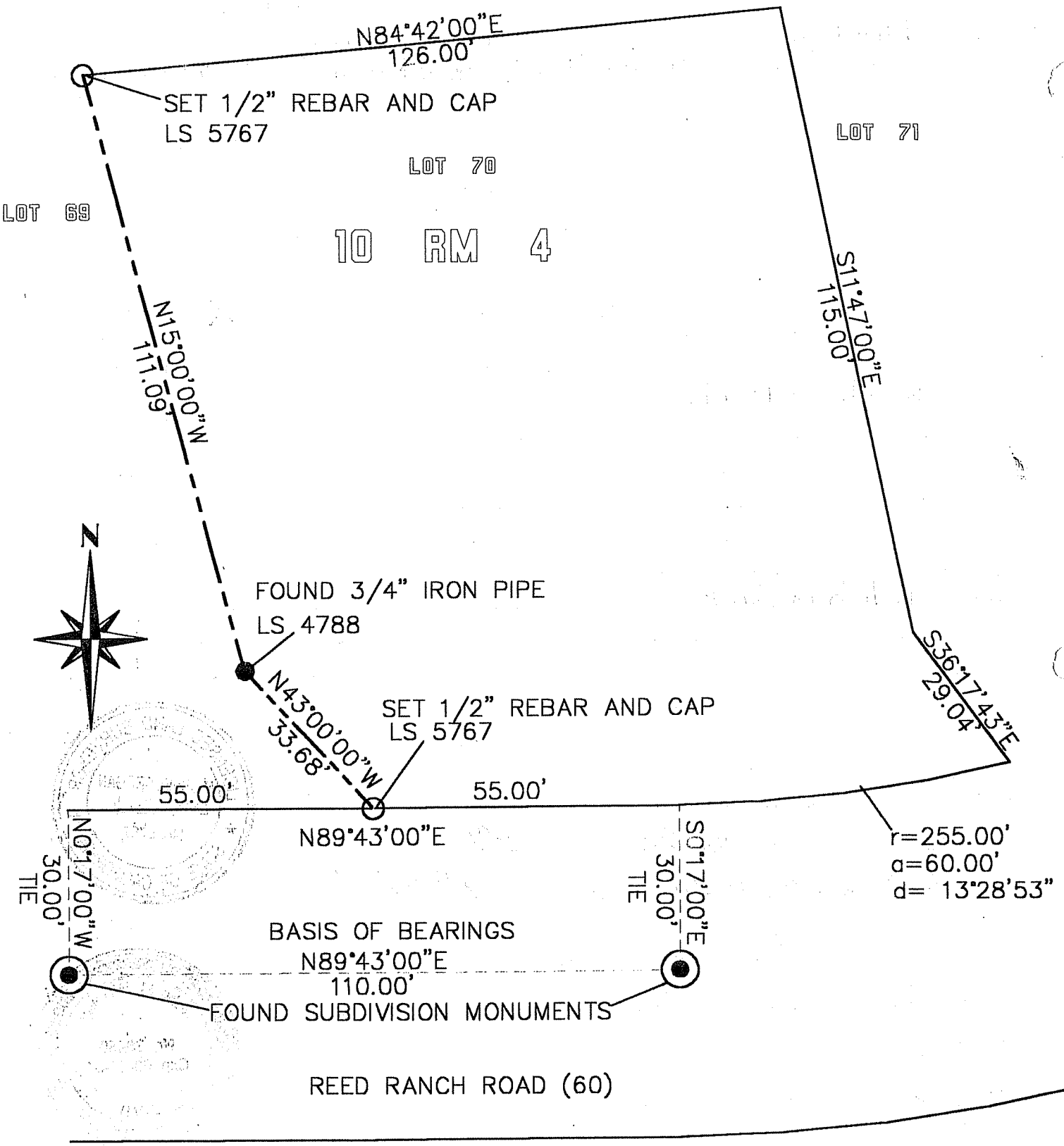
### COUNTY SURVEYOR'S STATEMENT

This Corner Record was received JUNE 1, 2001 and examined and filed JUNE 5, 2001

Signed John M. Wooley Title DEPUTY



County Surveyor's Comment \_\_\_\_\_



M. BROGAN AND ASSOCIATES, INC.  
 319 MILLER AVENUE SUITE 4  
 MILL VALLEY CA 94941  
 388-7865 JOB 5511  
 NOT TO SCALE

SURVEY FOR NO. 43  
 REED RANCH ROAD  
 TIBURON MARIN COUNTY  
 34-301-06\11