

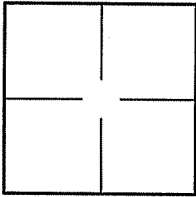
**CORNER RECORD**

Document Number A.P.# 034-291-35

City of TIBURON

County of MARIN, California

Brief Legal Description PARCEL 1, 7 P.M. 52



**CORNER TYPE**

**COORDINATES (Optional)**

Government Corner  Control

Meander  Property

Rancho  Other

Date of Survey 10/15/08

N. \_\_\_\_\_  
 E. \_\_\_\_\_  
 Zone \_\_\_\_\_ NAD27  NAD83   
 NAD83 Epoch \_\_\_\_\_  
 Elev. \_\_\_\_\_  
 Vert. Datum: NGVD29  NAVD88   
 Meas. Units: Metric  Imperial

Corner- Left as found  Found and tagged  Established  Reestablished  Rebuilt

Identification and type of corner found: Evidence used to identify or procedure used to establish or reestablish the corner:

REESTABLISHED 2 CORNERS, ONE ANGLE POINT, AND ONE POINT ON PROPERTY LINE OF PARCEL 1, 7 P.M. 52  
BASED UPON FOUND STREET MONUMENTS PER 7 P.M. 52.

FOUND PIPE & PLUG, R.C.E. 30465 PER CORNER RECORD 034-291-35

A description of the physical condition of the monument as found and as set or reset: SEE SHEET 2.

**SURVEYOR'S STATEMENT**

This Corner Record was prepared by me or under my direction in conformance with

the Land Surveyor's Act on OCTOBER 15 2008

Signed Lawrence P Doyle P.L.S. or R.C.E. No. P.L.S. 4694



**COUNTY SURVEYOR'S STATEMENT**

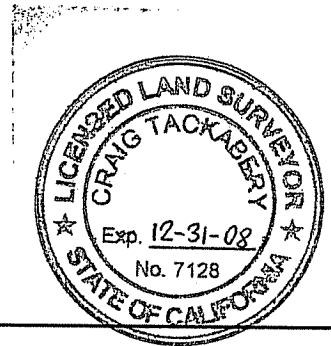
This Corner Record was received NOVEMBER 3, 2008

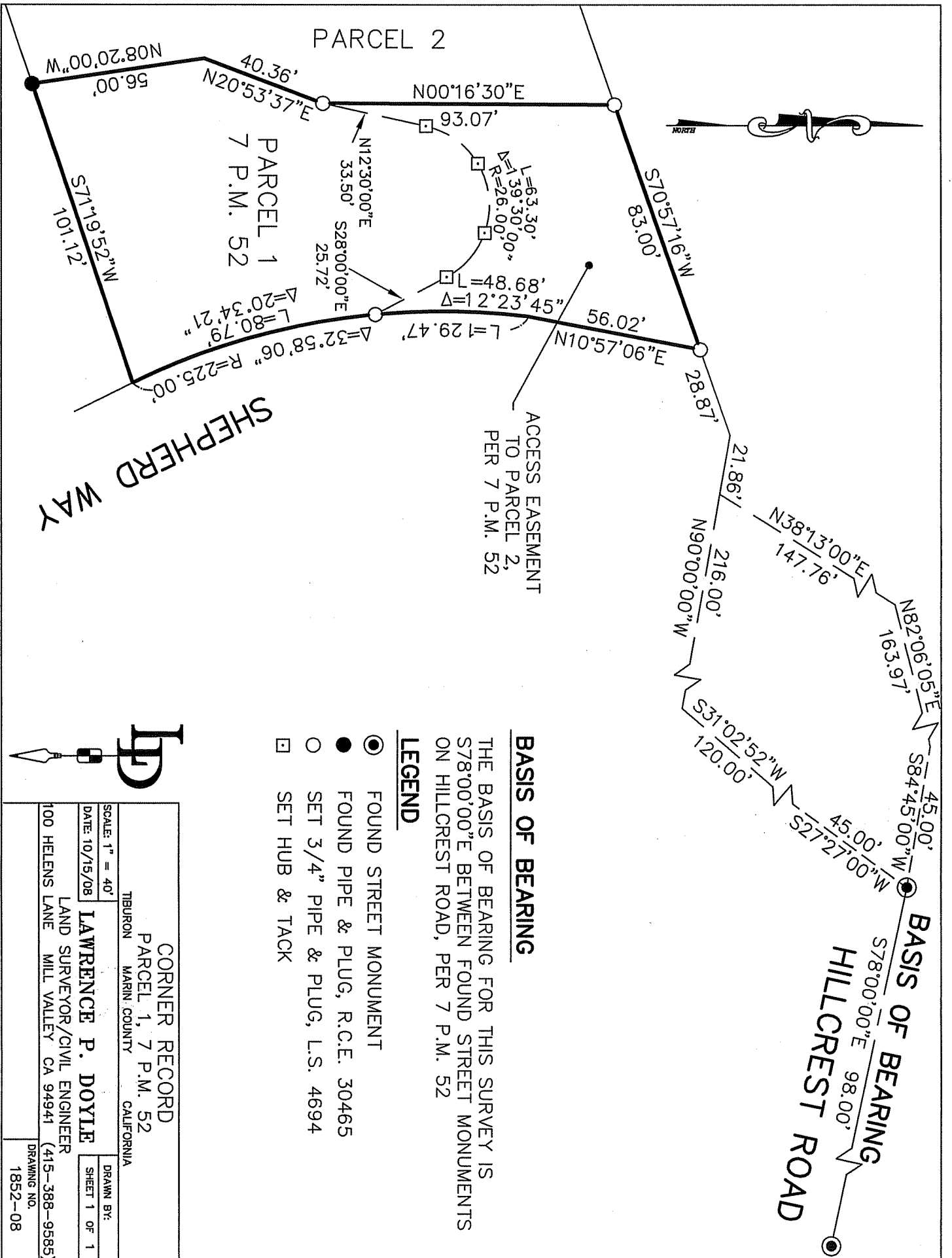
and examined and filed DECEMBER 15, 2008

Signed [Signature] P.L.S. or R.C.E. No. 7128

Title COUNTY SURVEYOR

County Surveyor's Comment \_\_\_\_\_





**CORNER RECORD**  
**PARCEL 1, 7 P.M. 52**  
 TIBURON MARIN COUNTY CALIFORNIA

**LAWRENCE P. DOYLE**  
 LAND SURVEYOR/CIVIL ENGINEER  
 100 HELENS LANE MILL VALLEY CA 94941 (415-388-9585)

SCALE: 1" = 40'  
 DATE: 10/15/08  
 DRAWN BY: [ ]  
 SHEET 1 OF 1  
 DRAWING NO. 1852-08