

CORNER RECORD

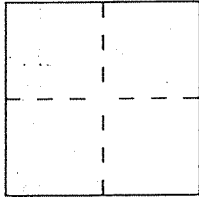
A.P.# 34-291-35

Document Number 98-003061

City of Tiburon

County of Marin, California

Brief Legal Description Parcel 1 7 PM 52



CORNER TYPE

- Government Corner
- Meander
- Rancho
- Date of Survey _____
- Control
- Property
- Other

COORDINATES (Optional)

N. _____
 E. _____
 Zone _____ Datum _____
 Elev. _____

Corner — Left as found Found and tagged Established Reestablished Rebuilt

Identification and type of corner found: Evidence used to identify or procedure used to establish or reestablish the corner:
Standard Street Monuments per 7 PM 52

A description of the physical condition of the monument as found and as set or reset:
Set 3/4" IRON PIPE WITH PLASTIC CAP RCE 30465
Set Nail and Brass Tag RCE 30465

SURVEYOR'S STATEMENT

This Corner Record was prepared by me or under my direction in conformance with the Land Surveyors' Act on May 12 1999.

Signed [Signature] L.S. or R.C.E. Number RCE 30465



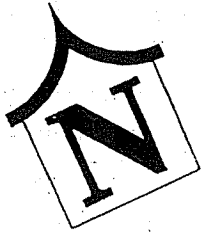
COUNTY SURVEYOR'S STATEMENT

This Corner Record was received MAY 13 1999 and examined and filed MAY 14 1999.

Signed [Signature] Title DEPUTY

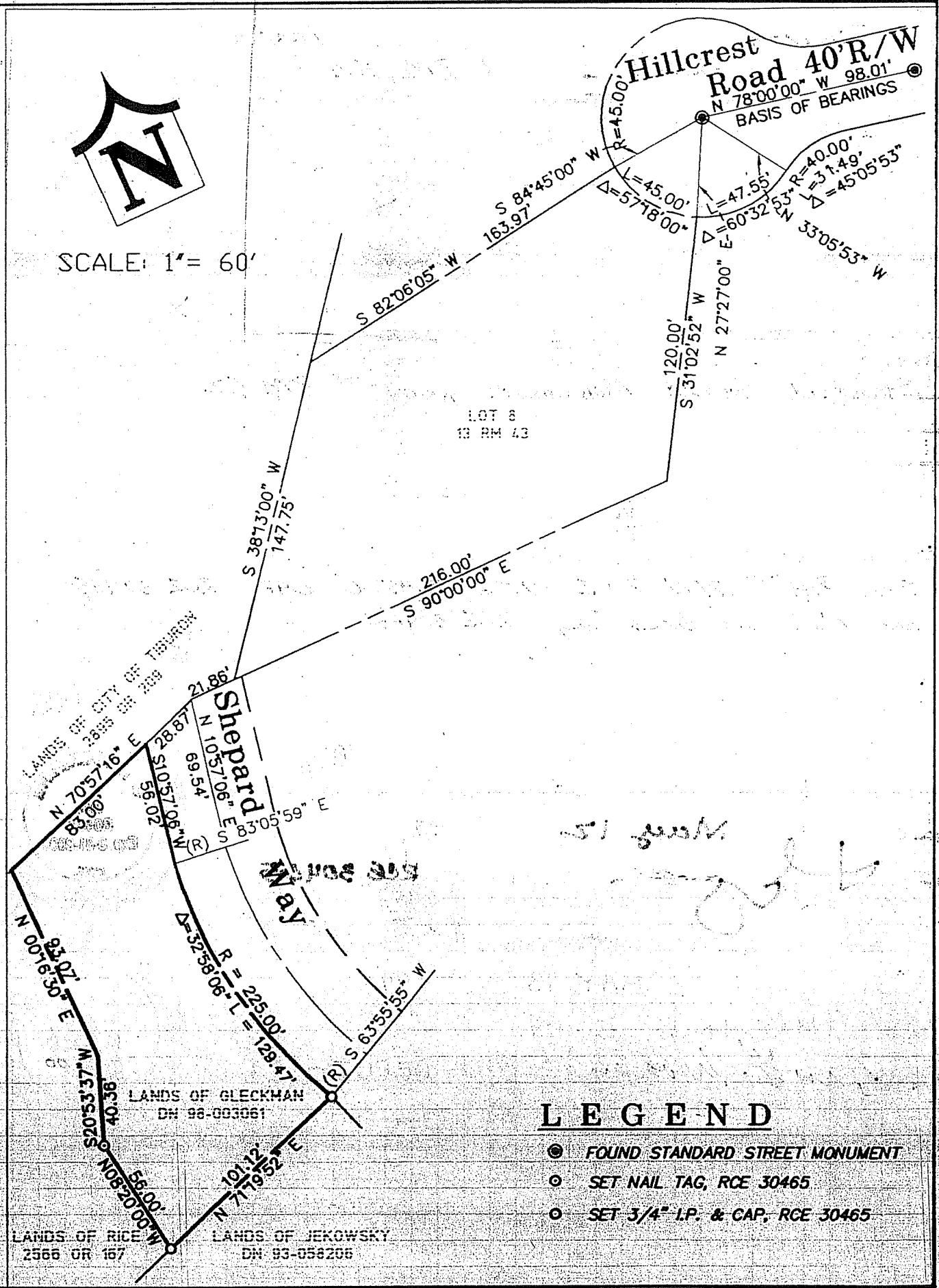


County Surveyor's Comment _____



SCALE: 1" = 60'

Hillcrest Road 40' R/W
N 78°00'00" W 98.01'
BASIS OF BEARINGS



LOT 8
13 RM 43

LANDS OF CITY OF TISHBURN
2835 OR 209

Shepard Street

May Street

LANDS OF GLECKMAN
DH 98-083061

LANDS OF RICE
2566 OR 167

LANDS OF JEKOWSKY
DH 93-058206

LEGEND

- FOUND STANDARD STREET MONUMENT
- SET NAIL TAG, RCE 30465
- SET 3/4" I.P. & CAP, RCE 30465