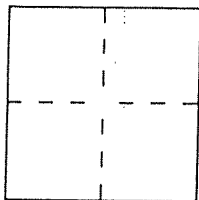


CORNER RECORD

Document Number 034-281-2934
City of Tiburon County of Marin, California
Brief Legal Description Street Monuments in Mercury Ave, Tiburon



CORNER TYPE

Government Corner Control
Meander Property
Rancho Other
Date of Survey Feb. 10, 2009

COORDINATES (Optional)

N. _____
E. _____
Zone _____ Datum _____
Elev. _____

Corner — Left as found Found and tagged Established Reestablished Rebuilt

Identification and type of corner found: Evidence used to identify or procedure used to establish or reestablish the corner:

Found Original Subdivision Monuments per 7 RM 13.
Set Straddle nails and then built standard street
monument casing around points.
(See sketch map) over

A description of the physical condition of the monument as found and as set or reset: _____

SURVEYOR'S STATEMENT

This Corner Record was prepared by me or under my direction in conformance with the Land Surveyors' Act on Feb 11, 2009

Signed David Harp L.S. or R.C.E. Number 5290



COUNTY SURVEYOR'S STATEMENT

This Corner Record was received FEBRUARY 13, 2009 and examined

and filed MARCH 16, 2009

Signed _____ Title COUNTY SURVEYOR

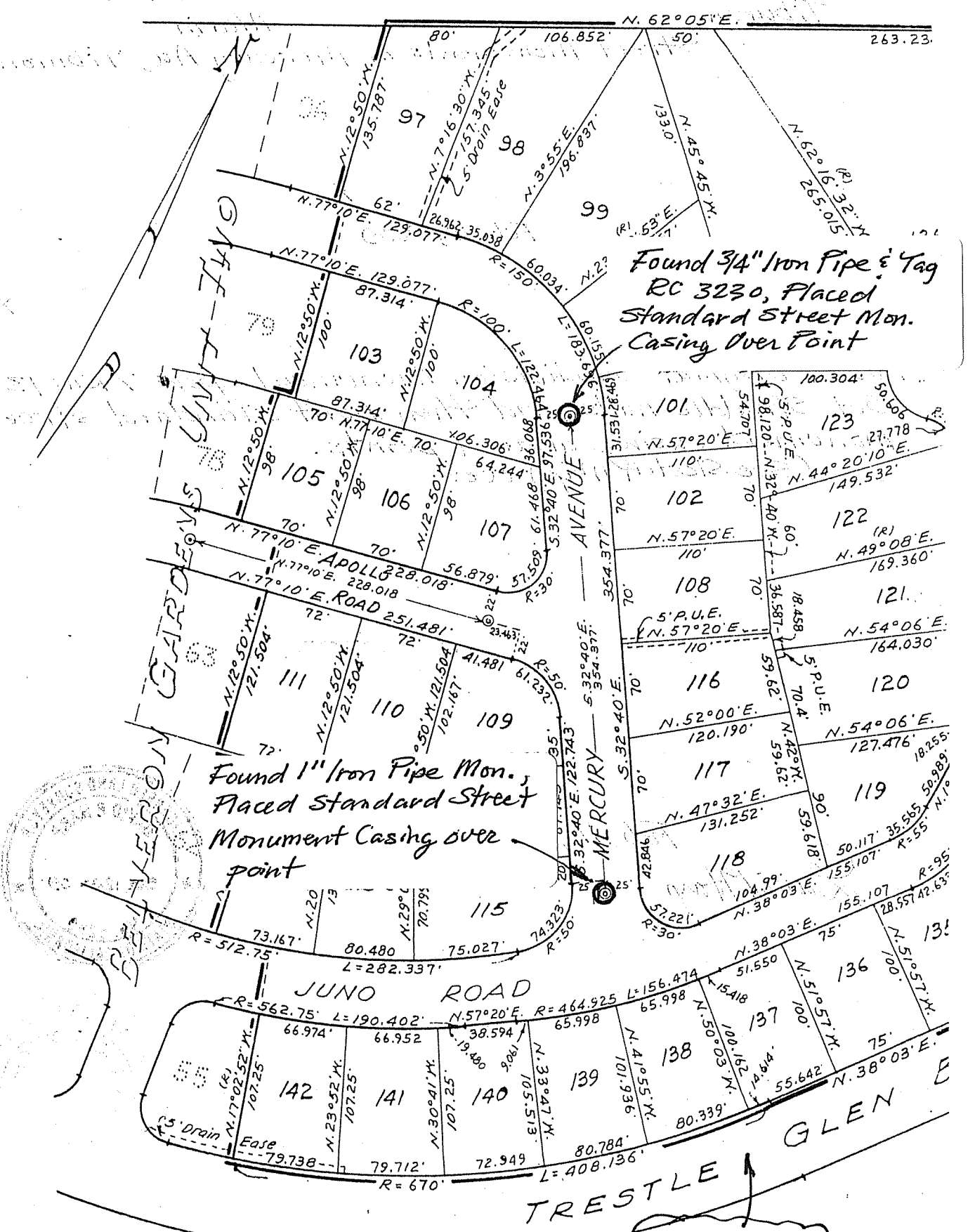


County Surveyor's Comment _____

RECEIVED

TAM NOTARIC
(Notary Public)

82-192



" SKETCH MAP "
(not to scale)