

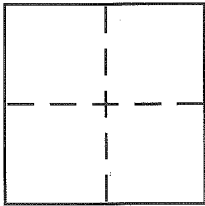
CORNER RECORD

Document Number 034-281-12

City of TIBURON

County of MARIN, California

Brief Legal Description LOT 132 OF "MAP OF BELVUE GARDENS UNIT 3" 7/1map/13



CORNER TYPE

Government Corner Control
Meander Property
Rancho Other
Date of Survey 4/19/16

COORDINATES (Optional)

N. _____
E. _____
Zone _____ NAD27 NAD83
NAD83 Epoch _____
Elev. _____
Vert. Datum: NGVD29 NAVD88
Meas. Units: Metric Imperial

Corner - Left as found Found and tagged Established Reestablished Rebuilt

Identification and type of corner found: Evidence used to identify or procedure used to establish or reestablish the corner:

FOUND MONUMENTS PER 7/1MAPS/13 AS SHOWN
ON STREET 2

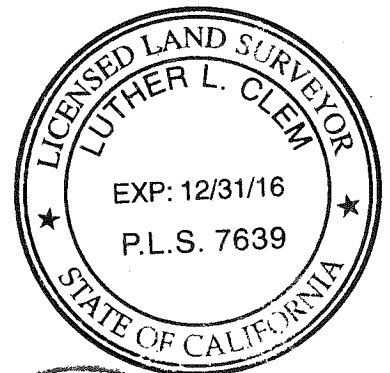
A description of the physical condition of the monument as found and as set or reset:

SAFE STREET 2

SURVEYOR'S STATEMENT

This Corner Record was prepared by me or under my direction in conformance with the Land Surveyor's Act on _____

Signed [Signature] P.L.S or R.C.E. No. 7639



COUNTY SURVEYOR'S STATEMENT

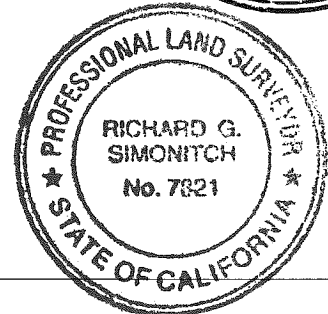
This Corner Record was received MAY 6, 2016

and examined and filed AUGUST 25, 2016

Signed [Signature] P.L.S or R.C.E. No. 7821

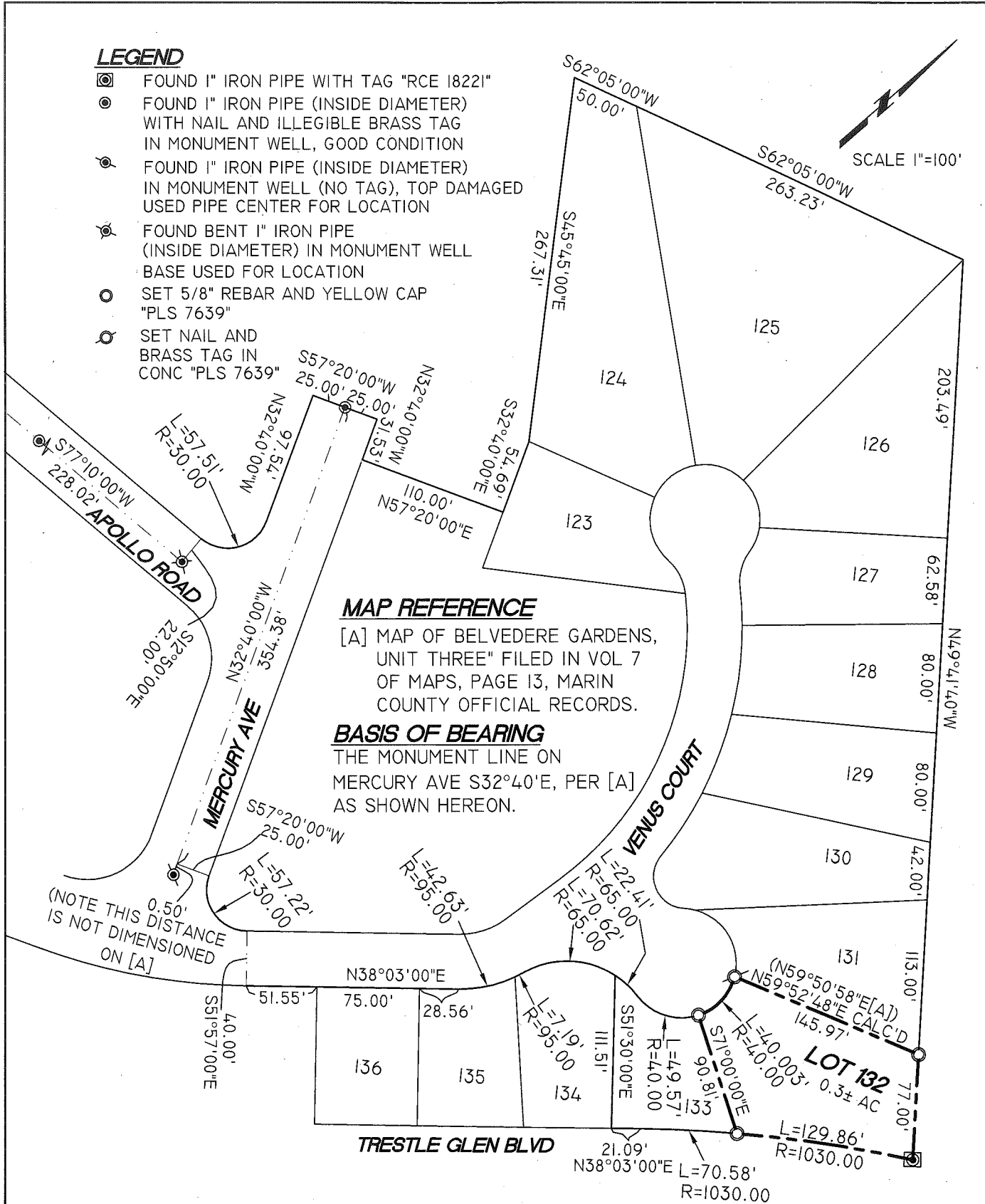
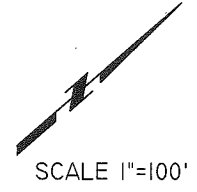
Title County Surveyor

County Surveyor's Comment _____



LEGEND

- ⊙ FOUND 1" IRON PIPE WITH TAG "RCE 18221"
- ⊙ FOUND 1" IRON PIPE (INSIDE DIAMETER) WITH NAIL AND ILLEGIBLE BRASS TAG IN MONUMENT WELL, GOOD CONDITION
- ⊙ FOUND 1" IRON PIPE (INSIDE DIAMETER) IN MONUMENT WELL (NO TAG), TOP DAMAGED USED PIPE CENTER FOR LOCATION
- ⊙ FOUND BENT 1" IRON PIPE (INSIDE DIAMETER) IN MONUMENT WELL BASE USED FOR LOCATION
- ⊙ SET 5/8" REBAR AND YELLOW CAP "PLS 7639"
- ⊙ SET NAIL AND BRASS TAG IN CONC "PLS 7639"



GEOMETRIX
 SURVEYING ENGINEERING INC.
 (415) 422-0527