

# CORNER RECORD

Agency Index

CR23-031

Document Number

A.P.N. 034-281-07

Town of Tiburon

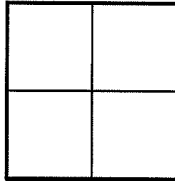
County of Marin

, California

Brief Legal Description LOT 137 7 R.M. 13

CORNER TYPE

COORDINATES(Optional)



Government Corner  Control   
 Meander  Property   
 Rancho  Other

N. \_\_\_\_\_ E. \_\_\_\_\_

Elevation \_\_\_\_\_

Units Metric  U.S. Survey Foot

Horizontal Datum \_\_\_\_\_

Zone \_\_\_\_\_ Epoch Date \_\_\_\_\_

Date of Survey 2/16/2023

Vertical Datum \_\_\_\_\_

Complies with Public Resources Code §§8801-8819

Complies with Public Resources Code §§8890-8902

PLS Act Ref.:

8765(d)

8771

8773

Other:

Corner/  
Monument:

Left as found

Established

Rebuilt

Pre-Construction

Found and tagged

Reestablished

Referenced

Post-Construction

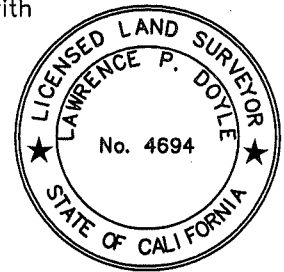
Narrative of corner identified and monument as found, set, reset, replaced, or removed:

See sheet #2 for description(s):

### SURVEYOR'S STATEMENT

This Corner Record was prepared by me or under my direction in conformance with the Professional Land Surveyors' Act on 3/13/2023

Signed Laurence P Doyle P.L.S. No. 4694



### COUNTY SURVEYOR'S STATEMENT

This Corner Record was received April 18, 2023

and examined and filed April 24, 2023

Signed T. W. Park P.L.S. No. 8176

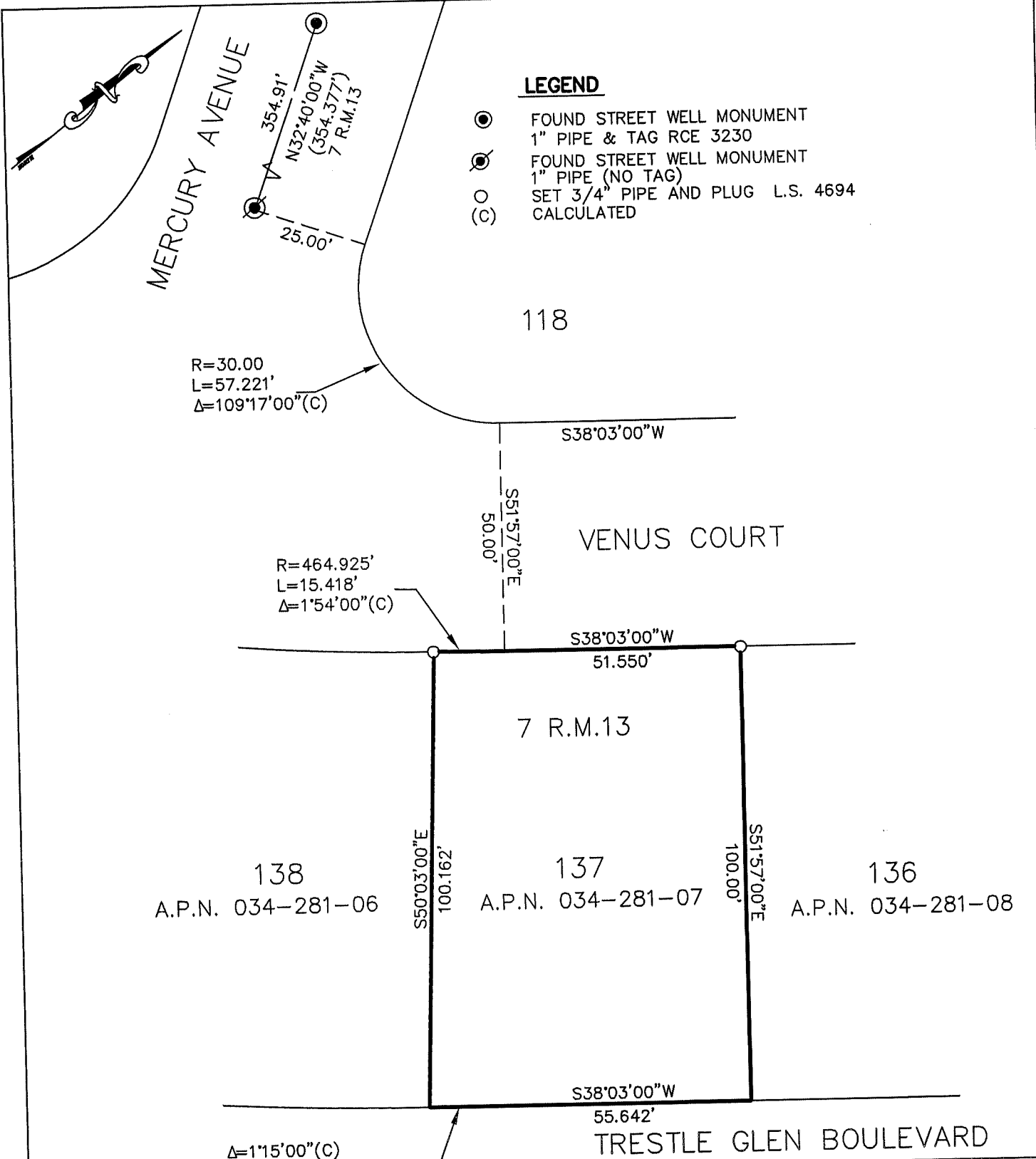
Title County Surveyor

County Surveyor's Comment



**LEGEND**

- ⊙ FOUND STREET WELL MONUMENT  
1" PIPE & TAG RCE 3230
- ⊙ FOUND STREET WELL MONUMENT  
1" PIPE (NO TAG)
- SET 3/4" PIPE AND PLUG L.S. 4694  
CALCULATED



**BASIS OF BEARINGS**

BEARING OF N 32°40'00" W  
BETWEEN FOUND STREET WELL MONUMENTS  
ON MERCURY AVENUE



<b>CORNER RECORD</b>	
LOT 137 7 RM 13	
TOWN OF TIBURON MARIN COUNTY CALIFORNIA	
SCALE: 1"=30'	DRAWN BY:
DATE: 3/13/23	<b>LAWRENCE P. DOYLE</b>
LAND SURVEYOR/CIVIL ENGINEER	
100 HELENS LANE MILL VALLEY CA 94941 (415-388-9585)	
DRAWING NO. 3035-23	