

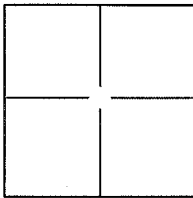
# CORNER RECORD

Document Number APN 034-271-29

City of TIBURON

County of MARIN, California

Brief Legal Description LOT 39 PER 7 MAPS 2



### CORNER TYPE

Government Corner  Control   
 Meander  Property   
 Rancho  Other

Date of Survey 03/27/2014

### COORDINATES(Optional)

N. \_\_\_\_\_  
 E. \_\_\_\_\_  
 Zone \_\_\_\_\_ NAD27  NAD83   
 NAD83 Epoch \_\_\_\_\_  
 Elev. \_\_\_\_\_  
 Vert. Datum: NGVD29  NADV88   
 Meas. Units: Metric  Imperial

Corner - Left as found  Found and tagged  Established  Reestablished  Rebuilt

Identification and type of corner found: Evidence used to identify or procedure used to establish or reestablish the corner:

PROPERTY CORNERS SET FROM RECORD MAP

SEE EXHIBIT ON SHEET 2

A description of the physical condition of the monument as found and as set or reset: \_\_\_\_\_

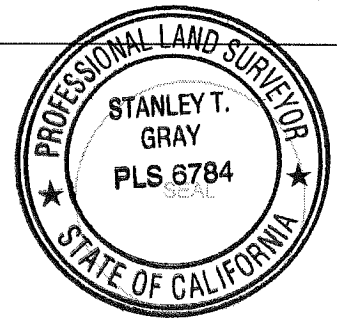
SET REBAR AND PLASTIC CAP STAMPED PLS 6784 AND A LEAD PLUG AND TAG STAMPED PLS 6784

SEE EXHIBIT ON SHEET 2

### SURVEYOR'S STATEMENT

This Corner Record was prepared by me or under my direction in conformance with the Land Surveyor's Act on 04/01/2014

Signed [Signature] P.L.S. or R.C.E. No.: 6784



### COUNTY SURVEYOR'S STATEMENT

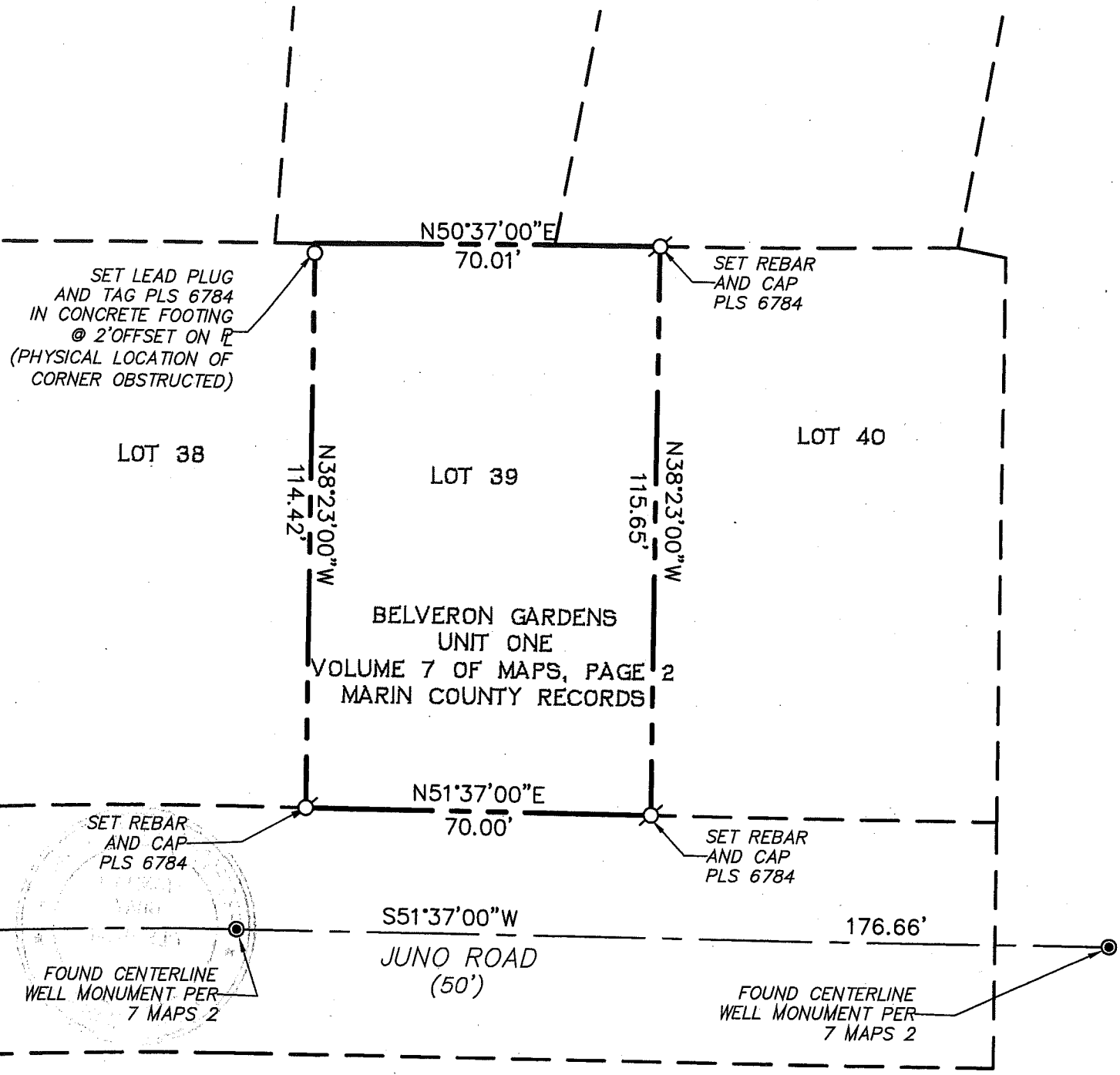
This Corner Record was received APR. 21, 2014 and examined and filed MAY 2, 2014

Signed [Signature] P.L.S. or R.C.E. No.: 7821

Title DEPUTY

County Surveyor's Comment \_\_\_\_\_





SET LEAD PLUG  
AND TAG PLS 6784  
IN CONCRETE FOOTING  
@ 2' OFFSET ON E  
(PHYSICAL LOCATION OF  
CORNER OBSTRUCTED)

SET REBAR  
AND CAP  
PLS 6784

LOT 38

LOT 39

LOT 40

BELVERON GARDENS  
UNIT ONE  
VOLUME 7 OF MAPS, PAGE 2  
MARIN COUNTY RECORDS

SET REBAR  
AND CAP  
PLS 6784

SET REBAR  
AND CAP  
PLS 6784

FOUND CENTERLINE  
WELL MONUMENT PER  
7 MAPS 2

FOUND CENTERLINE  
WELL MONUMENT PER  
7 MAPS 2

- NOTES**
1. DIMENSIONS ARE PER 7 MAPS 2, MARIN COUNTY RECORDS
  2. MEASURED = RECORD

