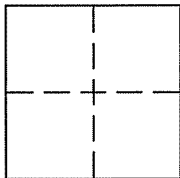


CORNER RECORD

Document Number APN:034-271-13

City of TIBURON and County of MARIN, California

Brief Legal Description: **BEING LOT 63, MAP ENTITLED "MAP OF BELVERON GARDENS UNIT TWO"
FILED IN VOLUME 7 OF MAPS AT PAGE 8, MARIN COUNTY OFFICIAL RECORDS**



CORNER TYPE

Government Corner Control
Meander Property
Rancho Other

Date of Survey 2/2/11

COORDINATES (Optional)

N: _____
E: _____
Zone: _____ NAD 27 NAD 83
Elev: _____
Vert. Datum: NGVD29 NAVD88
Meas. Units: Metric Imperial

CORNER -- LEFT AS FOUND FOUND AND TAGGED ESTABLISHED REESTABLISHED REBUILT

Identification and type of corner found: Evidence used to identify or procedure used to establish or reestablish the corner:

FOUND 3/4" IRON PIPES NAIL & TAG PER VOLUME 7 OF MAPS AT PAGES 8 & 13.

A description of the physical condition of the monument as found and as set or reset: _____
ORIGINAL CORNERS NOT FOUND. SET POINTS AS SHOWN ON REVERSE.

SURVEYOR'S STATEMENT:

The corner record was prepared by me or under my direction in conformance with

the Land Surveyors' Act on MARCH 4TH 2011

Signed: _____ L.S.# 8080



COUNTY SURVEYOR'S STATEMENT:

The corner record was received JUNE 29, 2011

and examined and filed JUNE 30, 2011

Signed: _____ R.C.E. or L.S. No. 7128

Title: COUNTY SURVEYOR



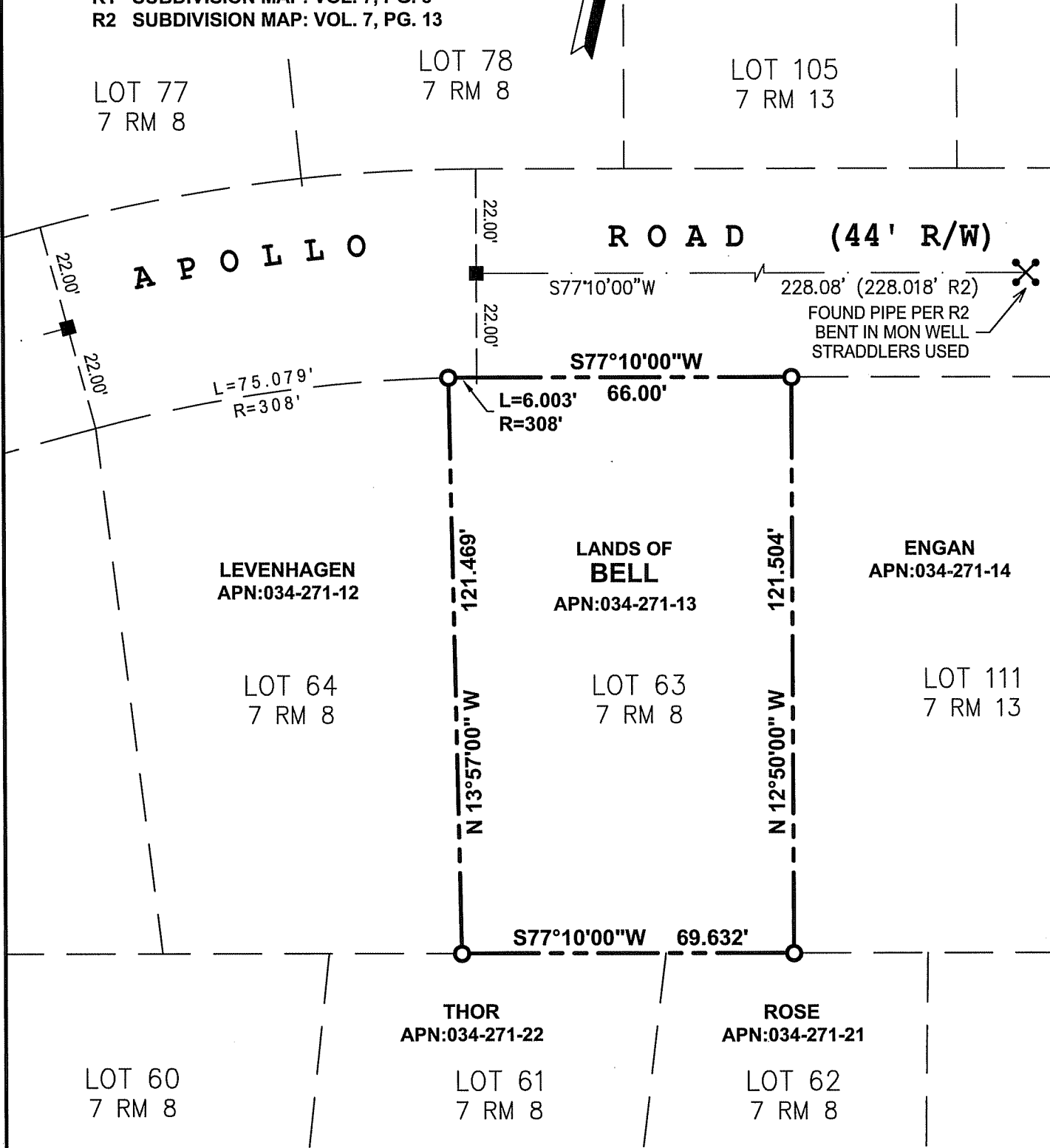
COUNTY SURVEYOR'S COMMENT: _____

LEGEND

- SUBJECT BOUNDARY LINES PER R1 & R2
- ADJOINER BOUNDARY LINES PER R1 & R2
- FOUND WELL MONUMWNTS PER R1 & R2
- ⊗ FOUND MONUMENT STADDLERS
- SET #6 REBAR & PLASTIC CAP LS 8080
- R1 SUBDIVISION MAP: VOL. 7, PG. 8
- R2 SUBDIVISION MAP: VOL. 7, PG. 13

AMERICAN LAND SURVEYING, INC.
 224 Taraval St, # 4, San Francisco, Ca 94116
 Ph: (415) 665-7467 Fx: (866) 260-5454

CORNER RECORD

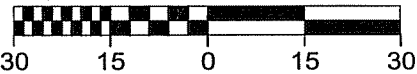


L=75.079'
R=308'

L=6.003'
R=308'

228.08' (228.018' R2)
FOUND PIPE PER R2
BENT IN MON WELL
STRADDLERS USED

SCALE: 1" = 30'



APN:034-271-13