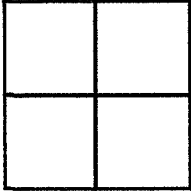


CORNER RECORD

Agency Index 21-118
Document Number 034-262-23
County of Marin, California

City of Tiburon

Brief Legal Description Lot 74 per 7 RM 8, "Map of Belveron Gardens Unit Two", filed 06/05/1950, M.C.R.



CORNER TYPE

Government Corner Control
Meander Property
Rancho Other

Date of Survey September 28, 2021

COORDINATES (Optional)

N. _____ E. _____
Elevation _____
Units Metric U.S. Survey Foot
Horizontal Datum _____
Zone _____ Epoch Date _____
Vertical Datum _____

Complies with Public Resources Code §§8801-8819
 Complies with Public Resources Code §§8890-8902

PLS Act Ref: 8765(d) 8771 8773 Other:

Corner/Monument: Left as found Established Rebuilt Pre-Construction
 Found and tagged Reestablished Referenced Post-Construction

Narrative of corner identified and monument as found, set, reset, replaced, or removed:

See sheet #2 for description (s):

The sidelines of Lands of Ostroff were extended to the midpoint between two resolutions to establish the rear corners. One held record geometry from the street monuments on Apollo Road. The other held record geometry from the street monuments on Mercury Road. The difference between these two rear lines was an overlap by approximately 0.06'.

SURVEYOR'S STATEMENT

This Corner Record was prepared by me or under my direction in conformance with the Professional Land Surveyors' Act on October 11, 2021

Signed [Signature] P.L.S. or R.C.E. No. 6649



COUNTY SURVEYOR'S STATEMENT

This Corner Record was received 10.18.21

and examined and filed NOV. 03, 2021

Signed [Signature] P.L.S. or R.C.E. No. 9292

Title DEPUTY



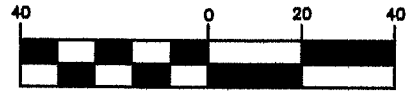
County Surveyor's Comment _____

All distances shown are in feet and decimals thereof

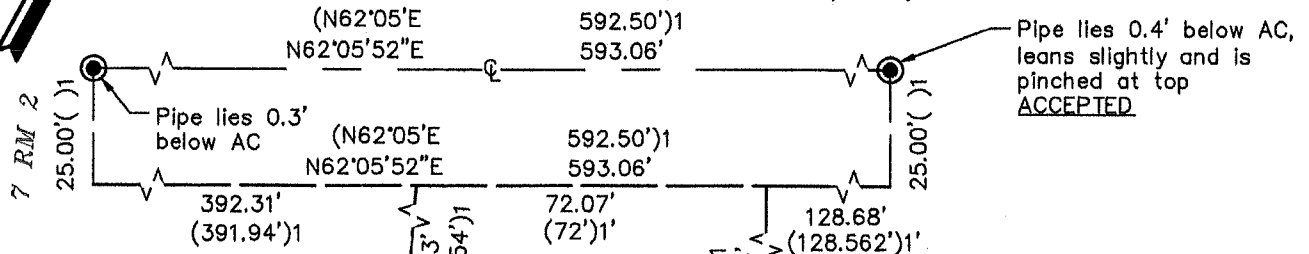
NOTES:

- 1. All measured bearings shown are record ()1, U.N.O.
- 2. All distances are perpendicular, U.N.O.

GRAPHIC SCALE

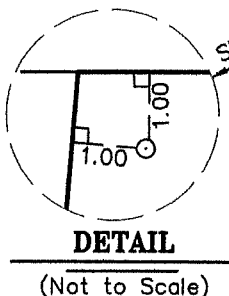


MERCURY ROAD (50' R/W) 1 (IN FEET)



LEGEND

- Found 1 1/4" Outer Diameter Iron Pipe with Wood Plug and 3/16" Head Nail, U.N.O., in Monument Well()1
- Set 5/8" Rebar & 1 1/2" Punched Aluminum Cap, Stamped "LA STEVENS PLS 6649"
- ⊙ Calculated Per Record Map
- U.N.O. Unless Noted Otherwise
- Not to scale
- ()1 7 RM 8, filed 06/05/1950
- ()2 2014 RS 50, filed 03/21/2014
- ⊕ Centerline of Right of Way
- AC Asphalt concrete pavement



DETAIL

(Not to Scale)

LANDS OF JACKOVICS TR (I.N. 2003-091845)

Lot 84

LANDS OF PANNEPACKER (I.N. 2011-027766)

Lot 83 (80.427')1 80.49'

N62°05'17"E 66.80' (N62°05'E 66.742')1

LANDS OF OSTROFF TR. (I.N. 2021-0054176)

Lot 74

N23°05'08"W 100.33' (N23°06'W 100.354')1

N23°06'00"W 98.32' (98.347')1

S27°55'00"E 97.97' (98')1

LANDS OF SOPER (I.N. 2010-060049)

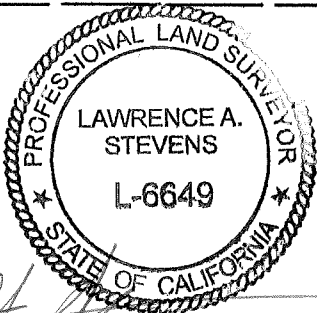
Lot 75

(152.255')1 152.37'

(N62°01'54"E)2 (N62°05'E 554.024')1 N62°05'00"E 554.44'()2

BASIS OF BEARINGS

APOLLO ROAD (44' R/W) 1



CORNER RECORD LANDS OF OSTROFF TR.

(Lot 74, 7 RM 8) TIBURON MARIN COUNTY CALIFORNIA SCALE: 1" = 40' OCTOBER 11, 2021

L.A. Stevens & Associates, Inc. Professional Land Surveyors * (415) 382-7713 7 Commercial Blvd., Suite 1 * Novato, CA 94949

Lawrence A. Stevens, PLS 6649

Copyright © Lawrence A. Stevens 2021

DWG# 212154fld_Boundary