

CORNER RECORD

Agency Index

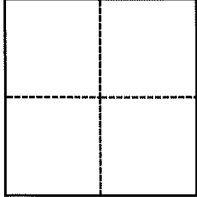
Document Number

DRW# 19-125
APN 034-262-19

City of TIBURON County of MARIN, California
Brief Legal Description PTN OF THE WESTERLY LINE OF 78 BELVERON GARDENS UNIT 2, 7 RM 8

CORNER TYPE

COORDINATES (Optional)



- Government Corner
- Meander
- Rancho
- Control
- Property
- Other

Date of Survey 10/08/2019

N. _____ E. _____
Elevation _____
Units Metric U.S. Survey Foot
Horizontal Datum _____
Zone _____ Epoch Date _____
Vertical Datum _____
 Complies with Public Resources Code §§8801-8819
 Complies with Public Resources Code §§8890-8902

- PLS Act Ref.: 8765(d) 8771 8773 Other:
- Corner/Monument: Left as found Established Rebuilt Pre-Construction
 Found and tagged Reestablished Referenced Post-Construction

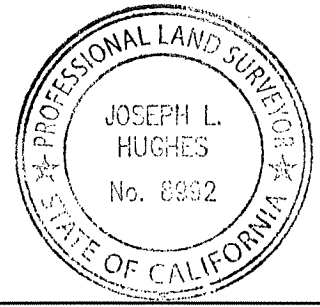
Narrative of corner identified and monument as found, set, reset, replaced, or removed:

See sheet #2 for description(s):

FOUND 1" IRON PIPE MONUMENTS IN STANDARD WELL MONUMENTS AS SHOWN ON BELVERON GARDENS UNITS 2 & 3, 7 RM 8 & 7 RM 13. HELD RECORD BEARINGS AND DISTANCES TO SET MONUMENTS ON THE WESTERLY LINE OF LOT 78 BELVERON GARDENS UNIT 2, 7 RM 8. SEE SHEET 2 FOR PARTICULARS.

SURVEYOR'S STATEMENT

This Corner Record was prepared by me or under my direction in conformance with the Professional Land Surveyors' Act on October 10, 2019.
Signed *Joseph L. Hughes* P.L.S. or R.C.E. No. PLS 8992



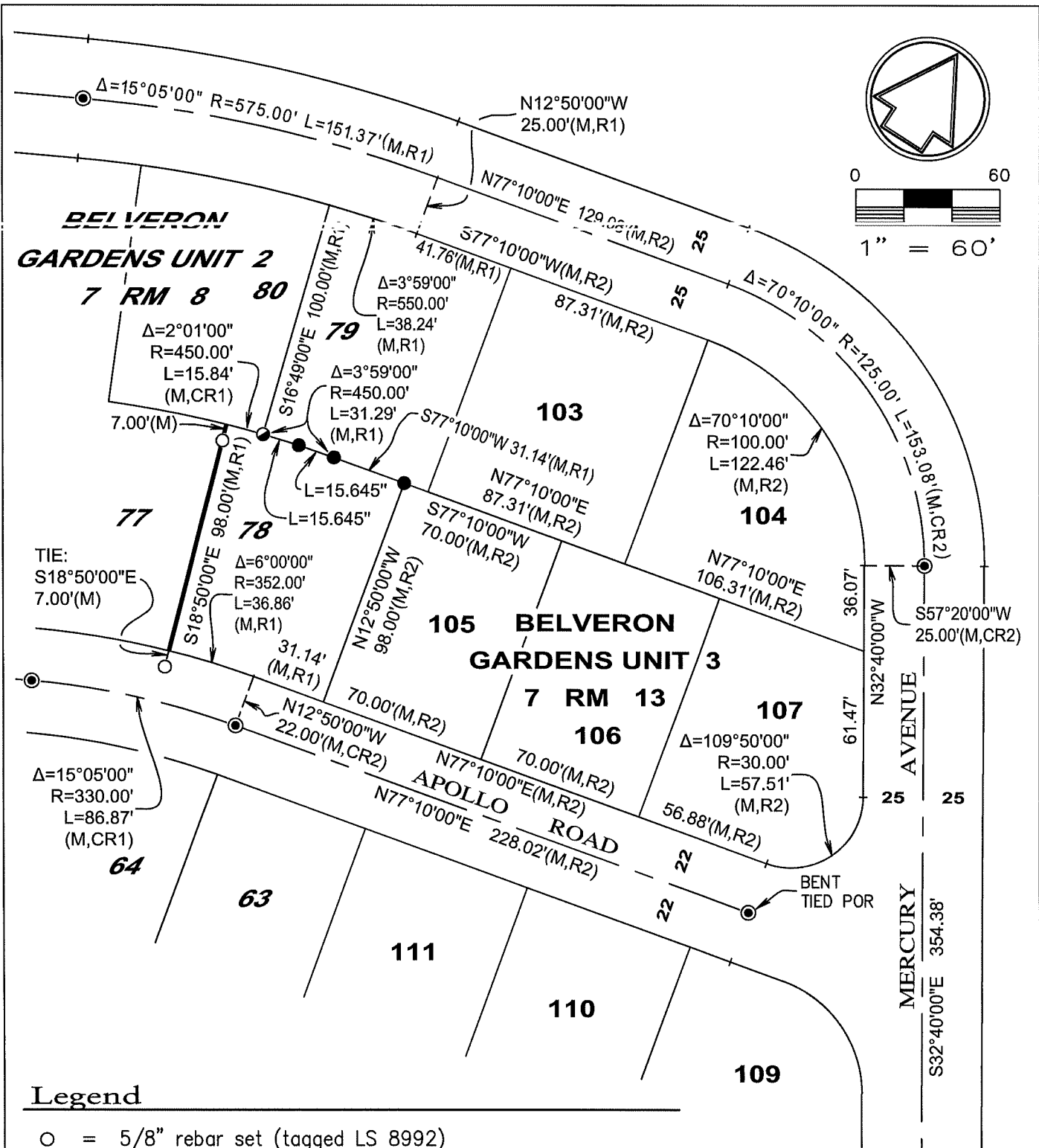
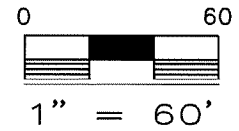
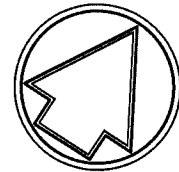
COUNTY SURVEYOR'S STATEMENT

This Corner Record was received October 16, 2019
and examined and filed NOV. 13, 2019.
Signed *John R. Semerad* P.L.S. or R.C.E. No. 9292
Title DEPUTY C.S.



County Surveyor's Comment

APN: 034-262-19



Legend

- = 5/8" rebar set (tagged LS 8992)
- = 5/8" rebar found (tagged LS 4483)
- ⦿ = Nail & tag found (stamped LS 4483)
- ⊗ = 1" iron pipe with nail in standard well monument found
- R1 = Belveron Gardens unit two / 7 RM 8
- R2 = Belveron Gardens unit three / 7 RM 13
- M = Measured
- C = Calculated
- POR = Point of rotation

PHILPS
& ASSOCIATES

LAND SURVEYORS

632 PETALUMA AVE, SEBASTOPOL, CALIFORNIA 95472 / (707) 829-0400