

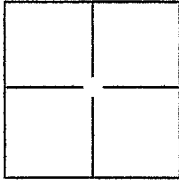
# CORNER RECORD

Document Number APN 034-262-16

City of Tiburon

County of Marin, California

Brief Legal Description Lot 107 - 7 RM 13



### CORNER TYPE

Government Corner  Control   
 Meander  Property   
 Rancho  Other

Date of Survey May 15, 2015

### COORDINATES(Optional)

N. \_\_\_\_\_  
 E. \_\_\_\_\_  
 Zone \_\_\_\_\_ NAD27  NAD83   
 NAD83 Epoch \_\_\_\_\_  
 Elev. \_\_\_\_\_  
 Vert. Datum: NGVD29  NADV88   
 Meas. Units: Metric  Imperial

Corner - Left as found  Found and tagged  Established  Reestablished  Rebuilt

Identification and type of corner found: Evidence used to identify or procedure used to establish or reestablish the corner.  
Found (2) 3/4" iron pipes in monument well, with brass nail and tag, illegible, as shown on 7 RM13.  
Measured distance between of 295.29', calculated 295.33'. Held as Basis of Bearings for  
survey taken as S 43°48'16" W as calculated from 7 RM 13.

A description of the physical condition of the monument as found and as set or reset: Found record monuments(4) at  
corners per 7 RM 13, and record monuments(2) at corners per Corner Record for APN 034-271-13,  
filed June 30, 2011 as shown on Exhibit A, Page 2 of 2. Set 3/4" iron pipes(4) with yellow cap stamped  
with "RCE 18221", and brass nail and brass tag(1) stamped with "RCE 18221" on property lines as  
shown on Exhibit A, Page 2 of 2.

### SURVEYOR'S STATEMENT

This Corner Record was prepared by me or under my direction in conformance with  
 the Land Surveyor's Act on May 29, 2015.

Signed [Signature] P.L.S. or R.C.E. No.: 18221



### COUNTY SURVEYOR'S STATEMENT

This Corner Record was received JUNE 5, 2015 and examined  
 and filed JULY 17, 2015.

Signed [Signature] P.L.S. or R.C.E. No.: 7821

Title County Surveyor

County Surveyor's Comment \_\_\_\_\_



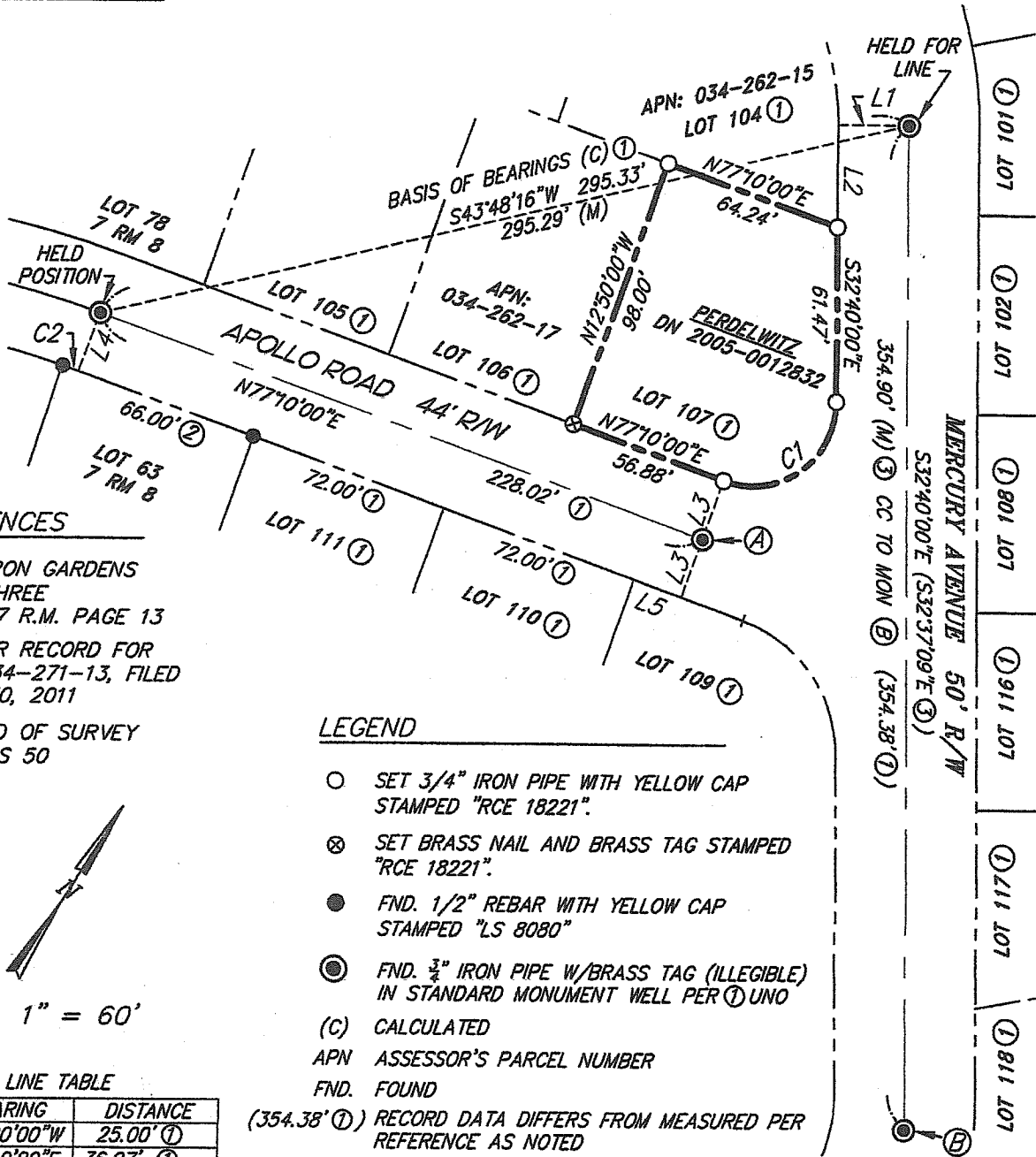


**ILS ASSOCIATES, INC.®**  
 Civil Engineering & Land Surveying  
 79 Galli Drive, Suite A  
 Novato, Ca 94949-5717  
 (415)883-9200 FAX (415)883-2763

DRAWN: GG	JOB NO: 8971
DATE: 05/29/2015	PAGE NO: 2 OF 2

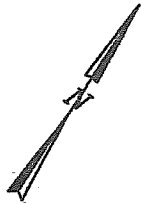
# EXHIBIT A

APN 034-262-16



## REFERENCES

- ① BELVERON GARDENS UNIT THREE BOOK 7 R.M. PAGE 13
- ② CORNER RECORD FOR APN 034-271-13, FILED JUNE 30, 2011
- ③ RECORD OF SURVEY 2014 RS 50



SCALE: 1" = 60'

## LINE TABLE

NO.	BEARING	DISTANCE
L1	S57°20'00"W	25.00' ①
L2	S32°40'00"E	36.07' ①
L3	S12°50'00"E	22.00' ①
L4	S12°50'00"E	22.00' ①
L5	N77°10'00"E	18.02' ①

## CURVE DATA

NO.	RADIUS	DELTA	LENGTH
C1	30'	109°50'04"	57.51' ①
C2	308'	1°00'07"	6.00' ②

## LEGEND

- SET 3/4" IRON PIPE WITH YELLOW CAP STAMPED "RCE 18221".
- ⊗ SET BRASS NAIL AND BRASS TAG STAMPED "RCE 18221".
- FND. 1/2" REBAR WITH YELLOW CAP STAMPED "LS 8080"
- ⊙ FND. 3/4" IRON PIPE W/BRASS TAG (ILLEGIBLE) IN STANDARD MONUMENT WELL PER ① UNO
- (C) CALCULATED
- APN ASSESSOR'S PARCEL NUMBER
- FND. FOUND
- (354.38' ①) RECORD DATA DIFFERS FROM MEASURED PER REFERENCE AS NOTED
- DN DOCUMENT NUMBER
- UNO UNLESS NOTED OTHERWISE
- CC CALCULATED CORNER
- MON MONUMENT

**SURVEY NOTES:** (A) FOUND BENT/DISTURBED PIPE IN MONUMENT WELL S61°15'21"E 0.05' FROM CC  
 (B) FOUND 3/4" IRON PIPE WITH LARGE NAIL (DAMAGED) IN MONUMENT WELL