

# CORNER RECORD

Agency Index

Document Number

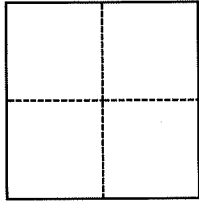
DPW#19-024  
APN 034-262-13

City of TIBURON County of MARIN, California

Brief Legal Description PTN OF THE SOUTHERLY LINE OF 79 BELVERON GARDENS UNIT 2, 7 RM 8

**CORNER TYPE**

**COORDINATES (Optional)**



- Government Corner
- Meander
- Rancho
- Control
- Property
- Other

Date of Survey 04/01/2019

- N. \_\_\_\_\_ E. \_\_\_\_\_  
 Elevation \_\_\_\_\_  
 Units  Metric  U.S. Survey Foot  
 Horizontal Datum \_\_\_\_\_  
 Zone \_\_\_\_\_ Epoch Date \_\_\_\_\_  
 Vertical Datum \_\_\_\_\_  
 Complies with Public Resources Code §§8801-8819  
 Complies with Public Resources Code §§8890-8902

- PLS Act Ref.:  8765(d)  8771  8773  Other:  
 Corner/Monument:  Left as found  Established  Rebuilt  Pre-Construction  
 Found and tagged  Reestablished  Referenced  Post-Construction

Narrative of corner identified and monument as found, set, reset, replaced, or removed:

See sheet #2 for description(s):

FOUND 1" IRON PIPE MONUMENTS IN STANDARD WELL MONUMENTS AS SHOWN ON BELVERON GARDENS UNITS 2 & 3, 7 RM 8 & 7 RM 13. HELD RECORD BEARINGS AND DISTANCES TO SET MONUMENTS ON THE SOUTHERLY LINE OF LOT 79 BELVERON GARDENS UNITS 2, 7 RM 8. SEE SHEET 2 FOR PARTICULARS.

**SURVEYOR'S STATEMENT**

This Corner Record was prepared by me or under my direction in conformance with the Professional Land Surveyors' Act on April 4, 2019  
 Signed Fred M. Phelps P.L.S. or R.C.E. No. LS 4483



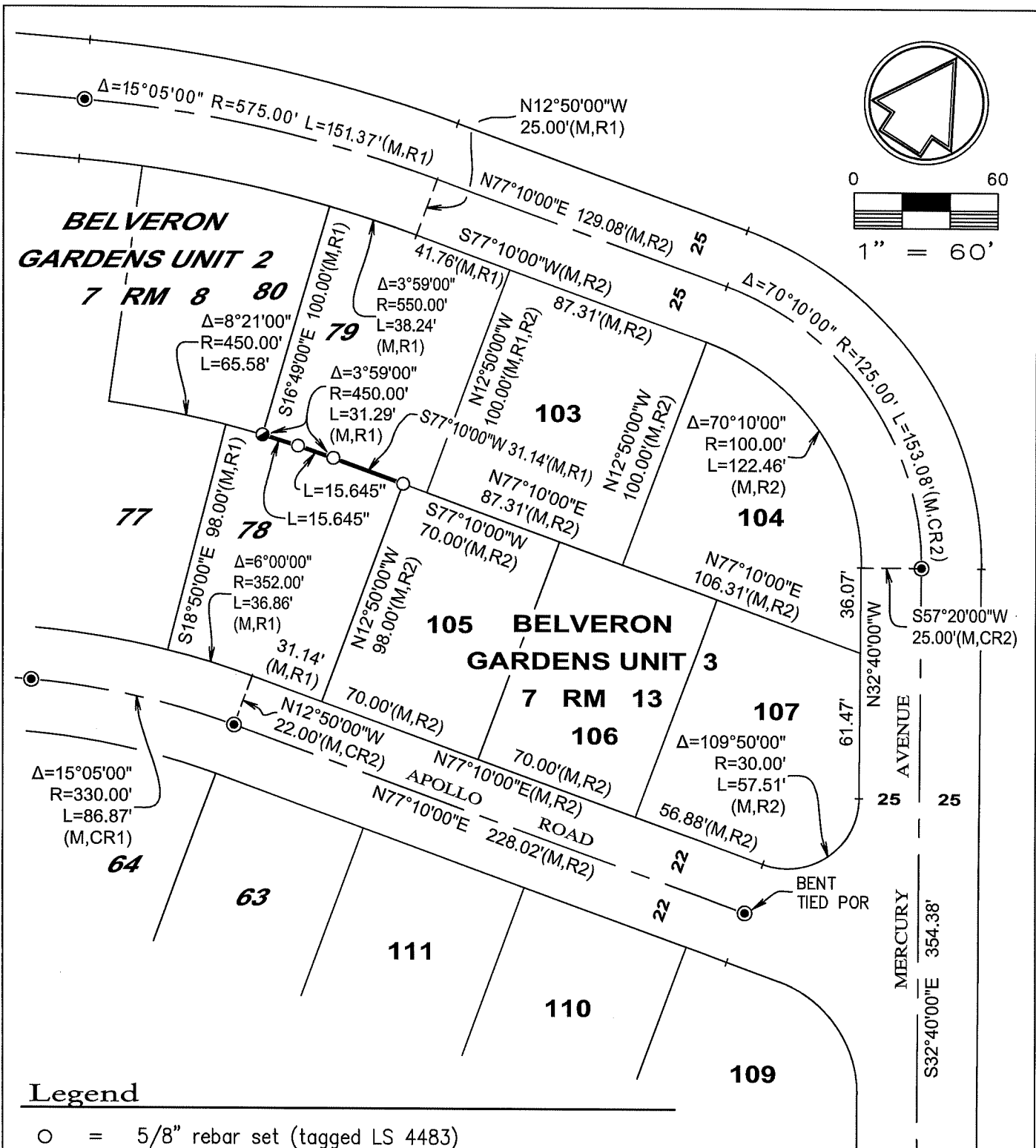
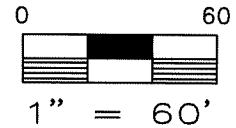
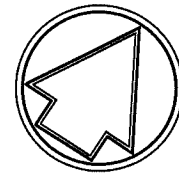
**COUNTY SURVEYOR'S STATEMENT**

This Corner Record was received April 11, 2019  
 and examined and filed July 29, 2019  
 Signed J. L. [Signature] P.L.S. or R.C.E. No. 9292  
 Title DEPUTY C.S.



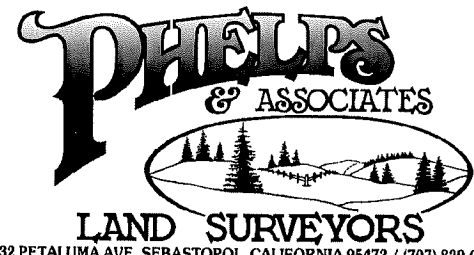
**County Surveyor's Comment**

APN: 034-262-13



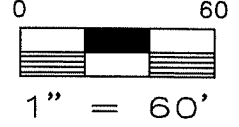
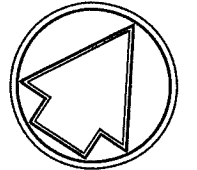
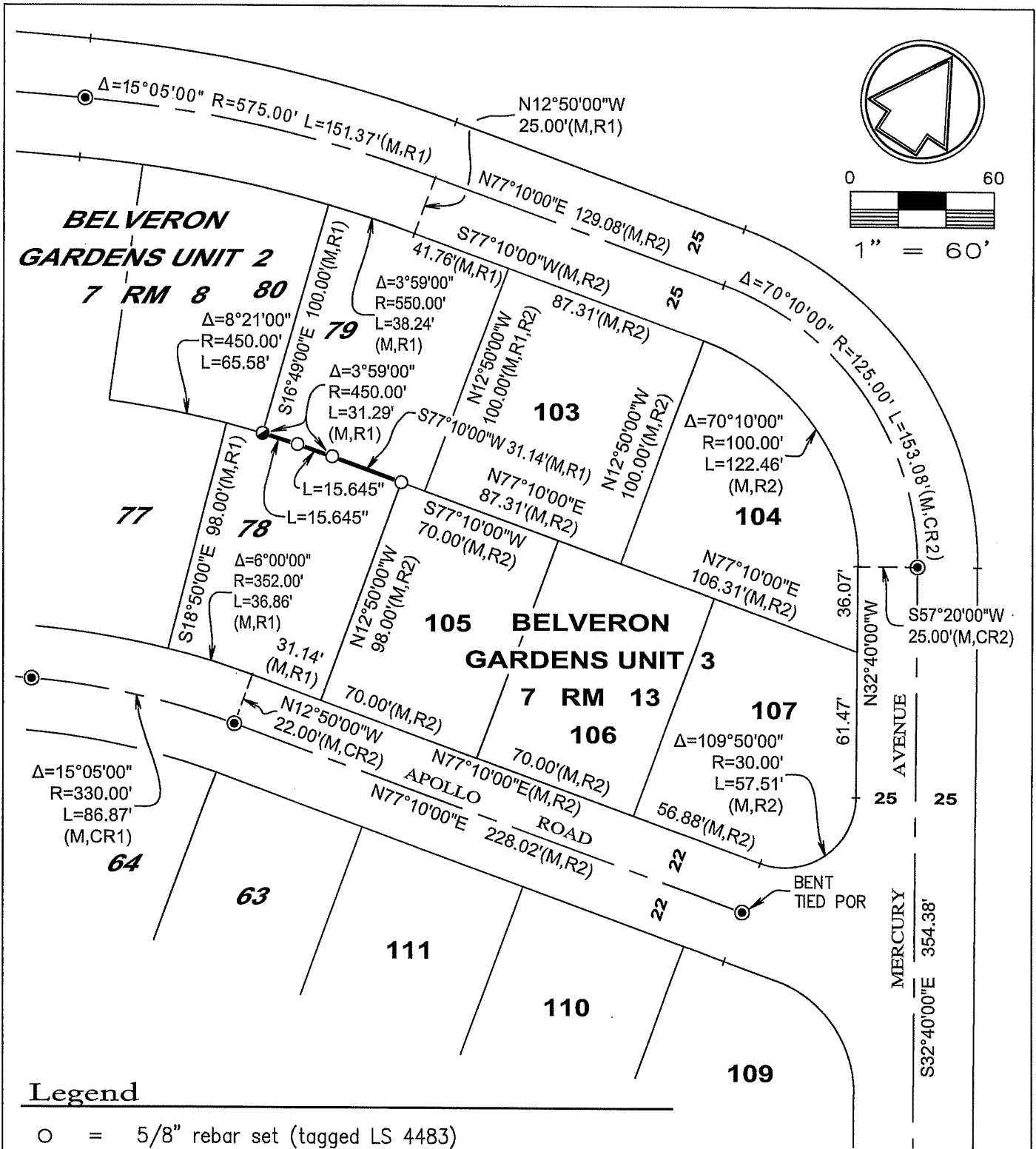
**Legend**

- = 5/8" rebar set (tagged LS 4483)
- = Nail & tag set (stamped LS 4483)
- ⊙ = 1" iron pipe with nail in standard well monument found
- R1 = Belveron Gardens unit two / 7 RM 8
- R2 = Belveron Gardens unit three / 7 RM 13
- M = Measured
- C = Calculated
- POR = Point of rotation



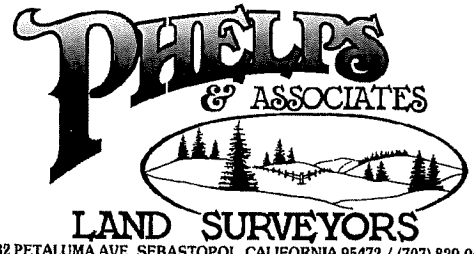
632 PETALUMA AVE, SEBASTOPOL, CALIFORNIA 95472 / (707) 829-0400

034-262-13



**Legend**

- = 5/8" rebar set (tagged LS 4483)
- = Nail & tag set (stamped LS 4483)
- ⊙ = 1" iron pipe with nail in standard well monument found
- R1 = Belveron Gardens unit two / 7 RM 8
- R2 = Belveron Gardens unit three / 7 RM 13
- M = Measured
- C = Calculated
- POR = Point of rotation



632 PETALUMA AVE, SEBASTOPOL, CALIFORNIA 95472 / (707) 829-0400