

L. A. Stevens & Associates, Inc.
Professional Land Surveyors
Novato, California

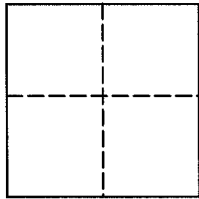
Lands of Melbostad
Job #: 14-1612

CORNER RECORD

Document Number 034-261-31

Town of Tiburon, County of Marin, California

Brief Legal Description: Being Lot 14 as shown on that certain map entitled, "Map of Belveron Gardens, Unit One" filed in Volume 7 of Maps at Page 2, Marin County Records.



CORNER TYPE

Government Corner Control
Meander Property
Rancho Other

Date of Survey September 29, 2014

COORDINATES (Optional)

N _____
E _____
Zone _____ NAD27 NAD83
NAD 83 Epoch _____
Elev. _____
Vert. Datum: NGVD29 NAVD88
Meas. Units: Metric Imperial

Corner - Left as found Found and tagged Established Reestablished Rebuilt

Identification and type of corner found: Evidence used to identify or procedure used to establish or reestablish the corner:
See Page 2 of 2 for additional information

A description of the physical condition of the monument as found and as set or reset:
See Page 2 of 2 for additional information

SURVEYOR'S STATEMENT

This Corner Record was prepared by me or under my direction in conformance with
The Land Surveyor's Act on September 30, 2014.

Signed [Signature] P.L.S. 6649



COUNTY SURVEYOR'S STATEMENT

This Corner Record was received 10/07/2014

and examined and filed OCTOBER 31, 2014

Signed [Signature] P.L.S. or R.C.E. No. 7821

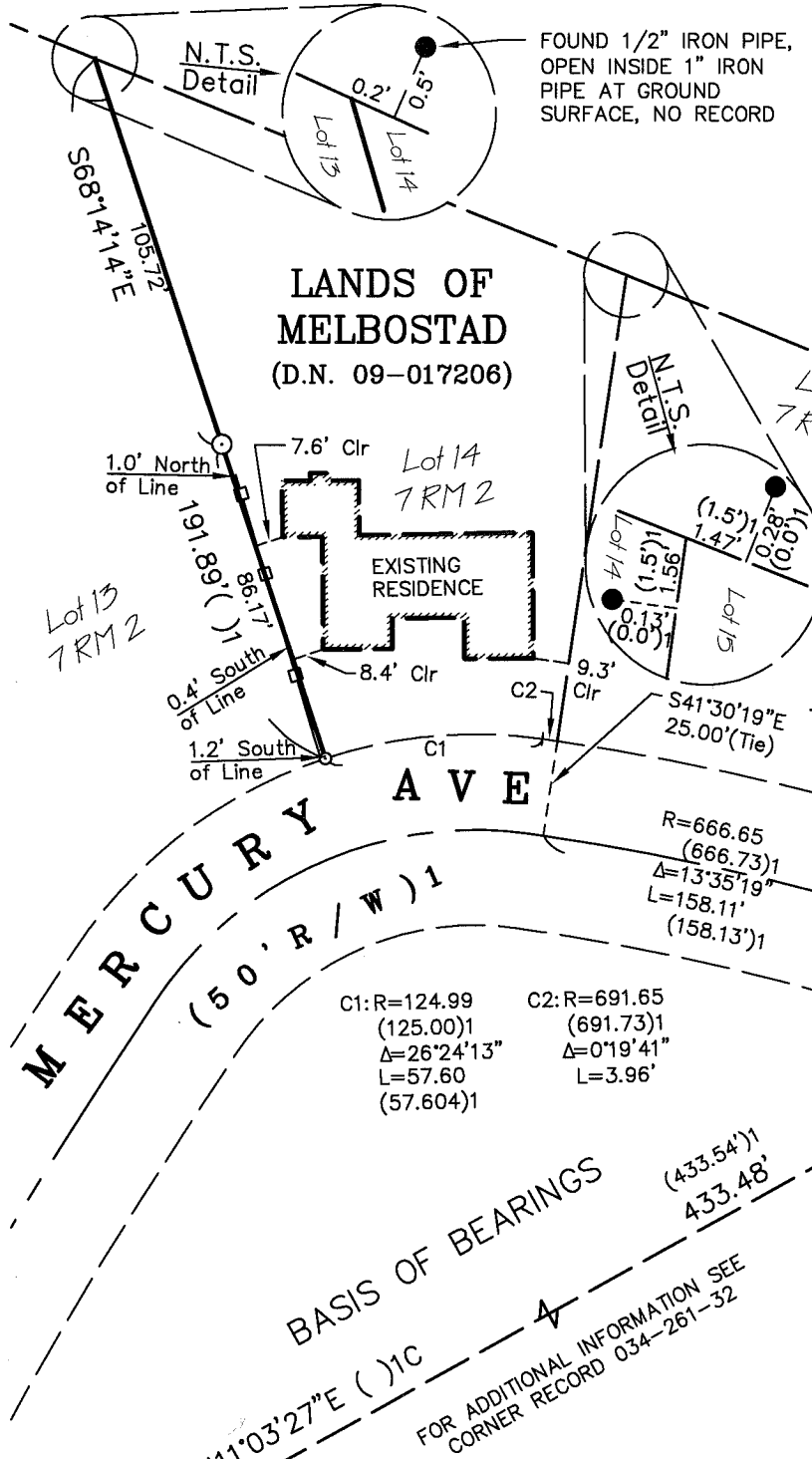
Title DEPUTY



County Surveyors' Comment _____

All distances shown are in feet and decimals thereof

LEGEND



- Found Disturbed (by Fence Construction) 3/4" Iron Pipe & Plastic Plug, & Cup Tack, Stamped "L.A. Stevens, LS 6649", 1' Above Ground Surface (U.N.O.) Per Corner Record 034-261-32
- ⊙ Found 1" I.D. Iron Pipe & Common Nail, In Hand Hole, 0.2' Below AC, Per R1
- ⊗ Found 3/4" I.D. Iron Pipe & Wood Plug, & Nail Shank, In Hand Hole, 0.4' Below AC, per R1, With 8d Finish Nail & Brass Tag, Stamped "LS 6649", per Corner Record 034-261-32
- Set Mag Nail & 1 1/2" Brass Washer, Stamped "LS 6649" in Concrete
- Set 5/8" Rebar & 1 1/2" Aluminum Cap, with Punch, Stamped "LA STEVENS PLS 6649"

- U.N.O. Unless Noted Otherwise
- Northerly Face of Wood Fence
- () 1 7 RM 2
- C Calculated
- N.T.S. Not to Scale
- I.D. Inside Diameter
- AC Asphalt Concrete
- Clr Clear

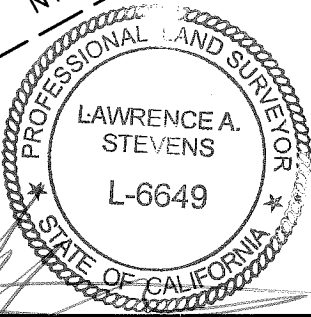
LANDS OF MELBOSTAD
(D.N. 09-017206)

C1: R=124.99
(125.00)1
Δ=26°24'13"
L=57.60
(57.604)1

C2: R=691.65
(691.73)1
Δ=0°19'41"
L=3.96'

R=666.65
(666.73)1
Δ=13°35'19"
L=158.11'
(158.13')1

(433.54')1
433.48'



Corner Record
Lands of Melbostad

(Lot 14, 7 RM 2)

Tiburon Marin County California
Scale: 1" = 50' September 2014

L.A. Stevens & Associates, Inc.

Professional Land Surveyors * (415) 382-7713
7 Commercial Blvd., Suite 1 * Novato, CA 94949

Lawrence A. Stevens, PLS 6649